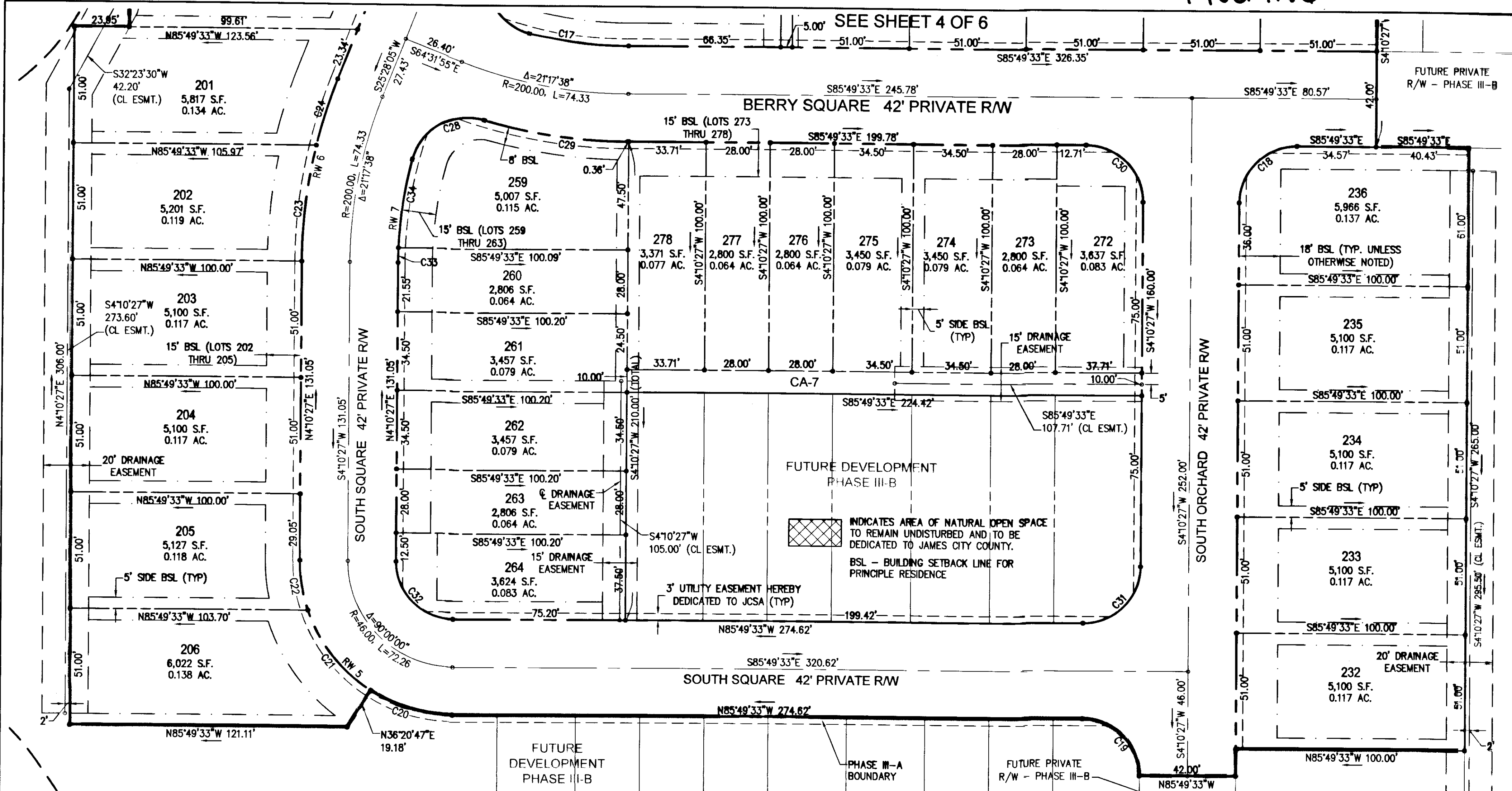


14009166

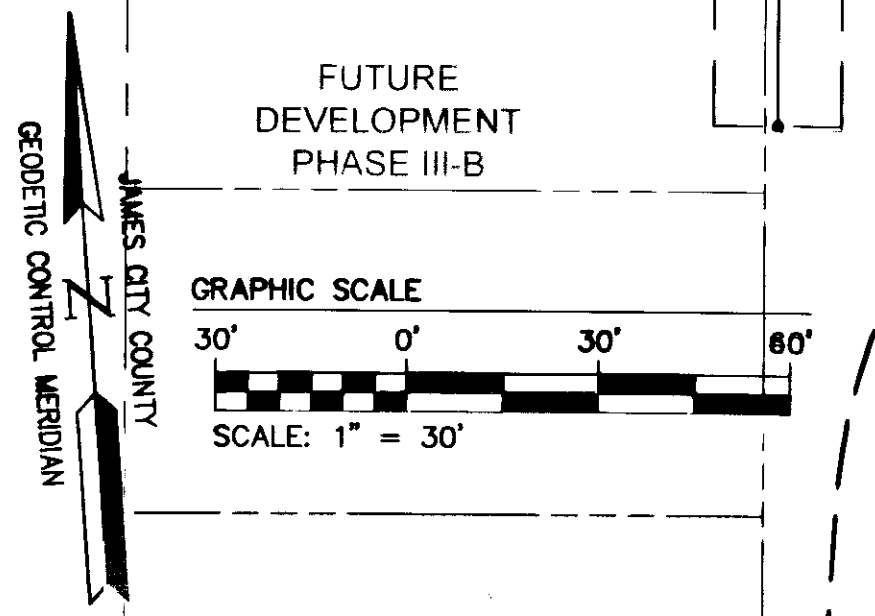
SEE SHEET 4 OF 6



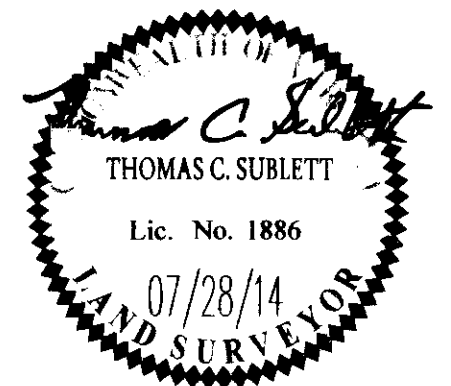
CURVE TABLE						
CURVE #	DELTA	RADIUS	LENGTH	TANGENT	CHORD	CHORD BEARING
C11	45°37'13"	81.00'	64.49'	34.07'	62.80'	S70°33'22"E
C12	32°30'11"	81.00'	45.95'	23.61'	45.34'	S31°29'41"E
C13	19°25'03"	81.00'	27.45'	13.86'	27.32'	S5°32'04"E
C14	9°39'29"	221.00'	37.25'	18.67'	37.21'	S9°00'12"W
C15	11°38'09"	221.00'	44.88'	22.52'	44.80'	S19°39'01"W
C16	9°18'44"	25.00'	42.46'	28.41'	37.54'	S23°11'17"E
C17	13°58'53"	179.00'	43.68'	21.95'	43.57'	S78°50'06"E
C18	90°00'00"	25.00'	39.27'	25.00'	35.36'	S49°10'27"W

CURVE TABLE						
CURVE #	DELTA	RADIUS	LENGTH	TANGENT	CHORD	CHORD BEARING
C19	90°00'00"	25.00'	39.27'	25.00'	35.36'	N40°49'33"W
C20	32°10'20"	67.00'	37.62'	19.32'	37.13'	N69°44'23"W
C21	38°42'12"	67.00'	45.26'	23.53'	44.40'	N34°18'07"W
C22	19°07'29"	67.00'	22.36'	11.29'	22.26'	N5°23'17"W
C23	13°20'35"	221.00'	51.47'	25.85'	51.35'	N10°50'45"E
C24	7°57'03"	221.00'	30.67'	15.36'	30.64'	N21°29'33"E
C25	8°02'40"	179.00'	25.13'	12.59'	25.11'	N21°26'45"E
C26	13°14'58"	179.00'	41.39'	20.79'	41.30'	N10°47'56"E

CURVE TABLE						
CURVE #	DELTA	RADIUS	LENGTH	TANGENT	CHORD	CHORD BEARING
C27	97°32'26"	39.00'	66.39'	44.50'	58.66'	N44°35'46"W
C28	91°47'28"	25.00'	40.05'	25.79'	35.90'	N64°45'50"E
C29	16°29'07"	221.00'	63.59'	32.01'	63.37'	S77°34'59"E
C30	90°00'00"	25.00'	39.27'	25.00'	35.36'	S40°49'33"E
C31	90°00'00"	25.00'	39.27'	25.00'	35.36'	S49°10'27"W
C32	90°00'00"	25.00'	39.27'	25.00'	35.36'	N40°49'33"W
C33	2°03'55"	179.00'	6.45'	3.23'	6.45'	N5°12'25"E
C34	12°37'43"	179.00'	39.45'	19.81'	39.37'	N12°33'14"E



City of Williamsburg & County of James City Circuit Court: This PLAT was recorded on 11-20-2014 at 9:12 AM PM PG Document # 14009166 BETSY B. WOOLRIDGE, CLERK Dep. Clerk
Plats Recorded herein as # 14009166
1 07/28/14 Rev Date Description



**AES**  
CONSULTING ENGINEERS  
Hampton Roads | Central Virginia | Middle Peninsula  
5248 Old Towne Road, Suite 1  
Williamsburg, Virginia 23188  
Phone: (757) 253-0040  
Fax: (757) 220-8994  
www.aesva.com

**PLAT OF SUBDIVISION**  
**THE SETTLEMENT AT POWHATAN CREEK**  
**PHASE III-A**  
**LOTS 196-206, 232-236, 249-264, 272-278**  
**AND COMMON AREA 6A & 7**  
BERKELEY DISTRICT JAMES CITY COUNTY VIRGINIA

Project Contacts: TCS  
Project Number: 8254-11A  
Scale: 1"=30' Date: 07/28/14  
Sheet Number  
**5 of 6**