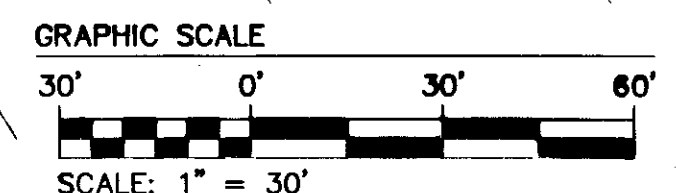
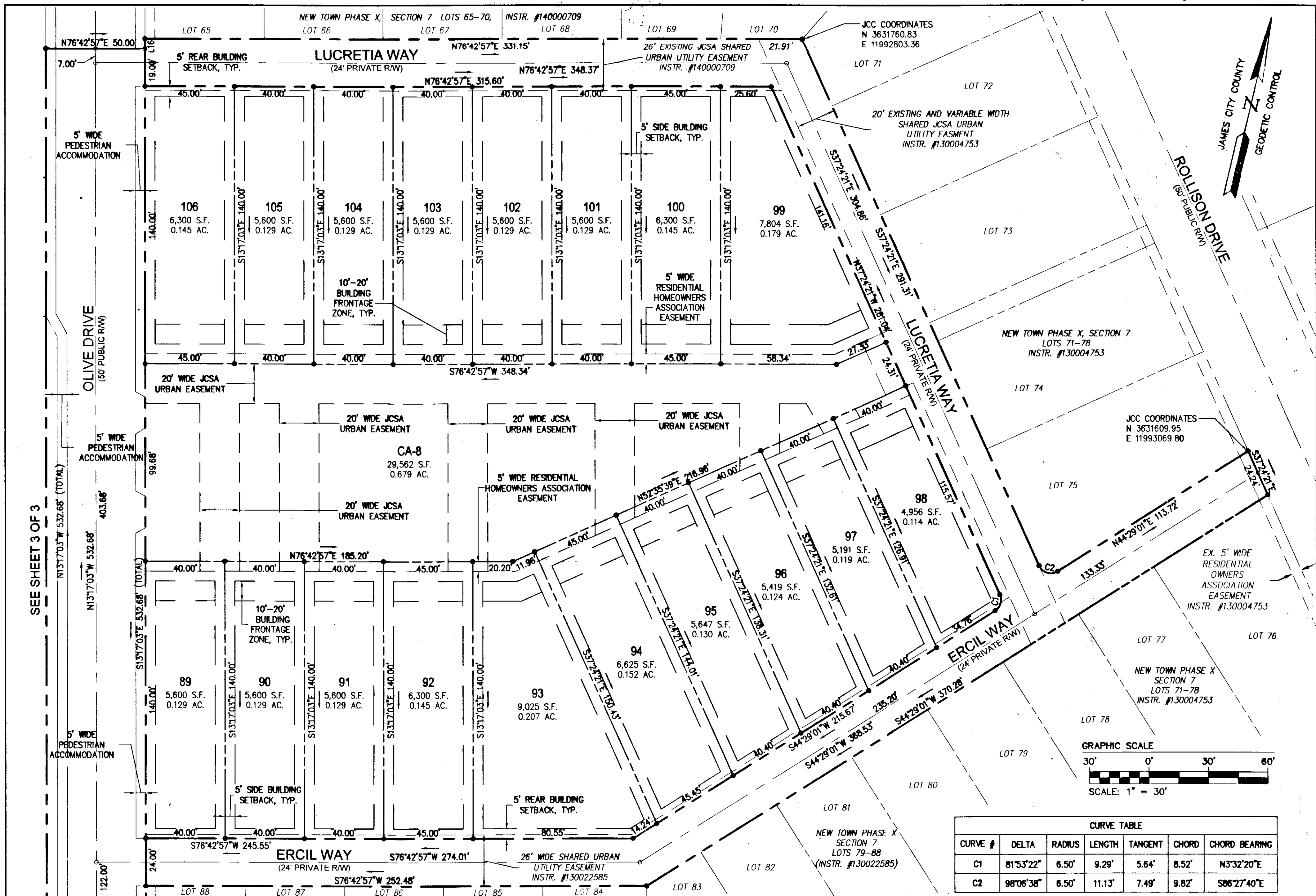


140016724



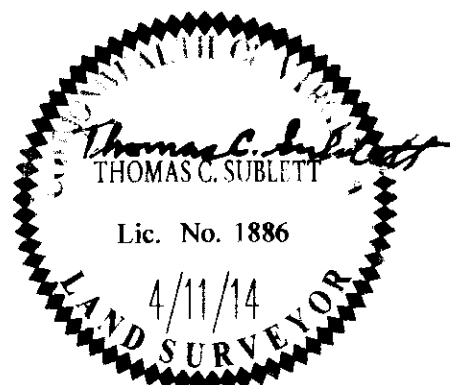
CURVE TABLE						
CURVE #	DELTA	RADIUS	LENGTH	TANGENT	CHORD	CHORD BEARING
C1	81°53'22"	6.50'	9.29'	5.64'	8.52'	N33°22'20"E
C2	98°06'38"	6.50'	11.13'	7.49'	9.82'	S86°27'40"E

SEE SHEET 3 OF 3

City of Williamsburg & County of James City  
 Circuit Court: This PLAT was recorded on  
October 10, 2014  
 at 4:05 AM/PM, PG. PG.  
 Document # 140016724  
 BETSY B. WOOLRIDGE, CLERK  
amy stou, Dep. Clerk

3 Large/Small Plat(s) Recorded  
 herewith as # 140016724

County Comments: \_\_\_\_\_ JFS  
 Revised By: \_\_\_\_\_



**AES**  
 CONSULTING ENGINEERS  
 Hampton Roads | Central Virginia | Middle Peninsula

5248 Old Towne Road, Suite 1  
 Williamsburg, Virginia 23188  
 Phone: (757) 253-0040  
 Fax: (757) 220-8994  
 www.aesva.com

PLAT OF SUBDIVISION  
 PHASE X, SECTION 7  
 LOTS 63-64 AND 89-106  
 NEW TOWN  
 OWNED BY ABVA DEVELOPMENT, LP

JAMESTOWN DISTRICT    JAMES CITY COUNTY    VIRGINIA

Project Contacts: TCS/JRK  
 Project Number: 6632-07-05B  
 Scale: 1" = 30'    Date: 4/11/2014  
 Sheet Number  
**2 of 3**