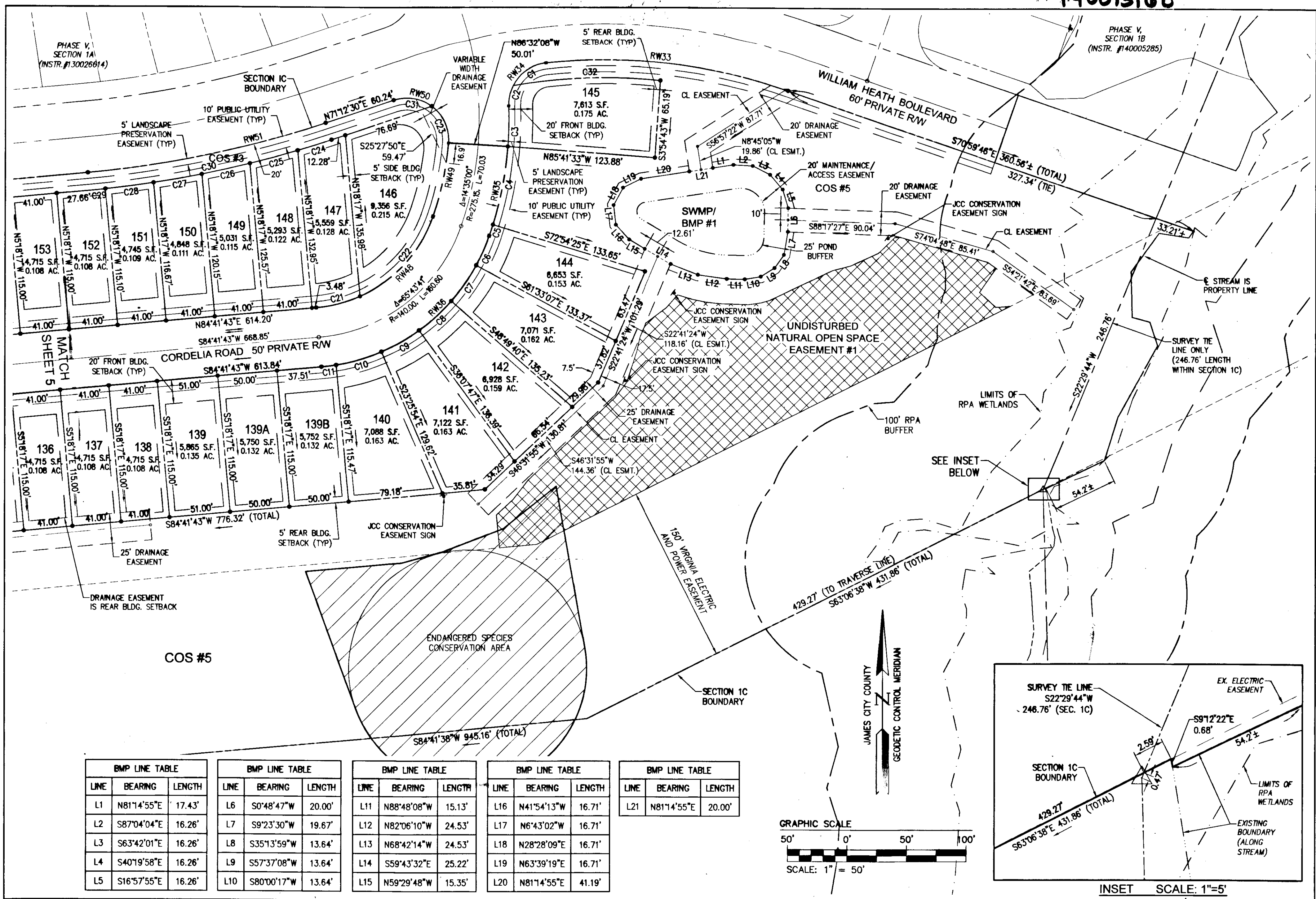
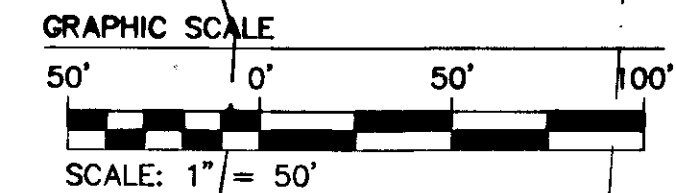
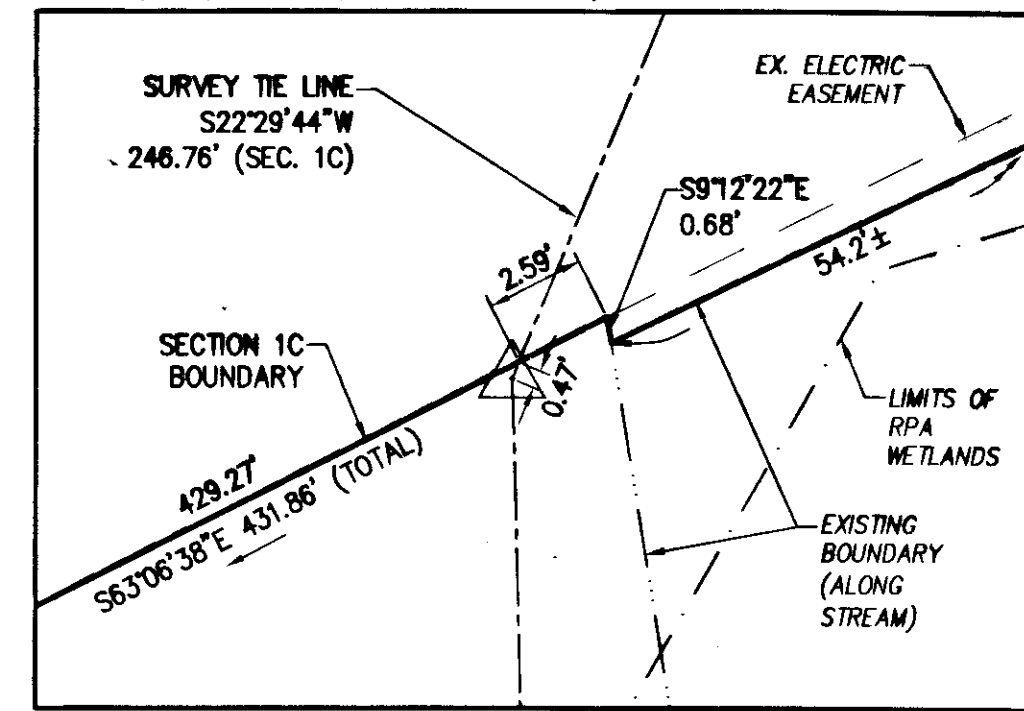


140013168



BMP LINE TABLE			BMP LINE TABLE			BMP LINE TABLE			BMP LINE TABLE			BMP LINE TABLE		
LINE	BEARING	LENGTH	LINE	BEARING	LENGTH	LINE	BEARING	LENGTH	LINE	BEARING	LENGTH	LINE	BEARING	LENGTH
L1	N81°14'55"E	17.43'	L6	S0°48'47"W	20.00'	L11	N88°48'08"W	15.13'	L16	N41°54'13"W	16.71'	L21	N81°14'55"E	20.00'
L2	S87°04'04"E	16.26'	L7	S9°23'30"W	19.67'	L12	N82°06'10"W	24.53'	L17	N6°43'02"W	16.71'			
L3	S63°42'01"E	16.26'	L8	S35°13'59"W	13.64'	L13	N68°42'14"W	24.53'	L18	N28°28'09"E	16.71'			
L4	S40°19'58"E	16.26'	L9	S57°37'08"W	13.64'	L14	S59°43'32"E	25.22'	L19	N63°39'19"E	16.71'			
L5	S16°57'55"E	16.26'	L10	S80°00'17"W	13.64'	L15	N59°29'48"W	15.35'	L20	N81°14'55"E	41.19'			

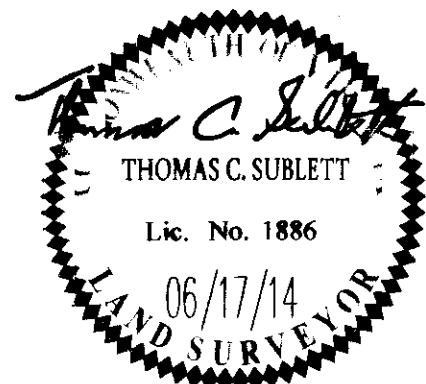


7 Large Sheet Plats Recorded herewith as # 140013168

City of Williamsburg & County of James City
 Circuit Court: This PLAT was recorded on
8-19-2014
 at 1:50 AM/PM, PG. PG.
 Document # 140013168
 BETSY B. WOOLRIDGE, CLERK
Betsy B. Woolridge, Dep. Clerk

1 06/17/14
 Rev Date

RMS
 Revised By



AES
 CONSULTING ENGINEERS
 614 Moorefield Park Drive
 Richmond, Virginia 23236-3655
 Phone: (804) 330-8040
 Fax: (804) 330-9840
 www.aesva.com

Hampton Roads | Central Virginia | Middle Peninsula

PLAT OF SUBDIVISION
 LOTS 107 - 162
COLONIAL HERITAGE
 PHASE V - SECTION 1C
 OWNER / DEVELOPER: COLONIAL HERITAGE, L.L.C.

STONEHOUSE DISTRICT JAMES CITY COUNTY VIRGINIA

Project Contacts: TRS/TCS
 Project Number: 8881-51C
 Scale: 1"=50' Date: 05/01/14
 Sheet Number
4 OF 7