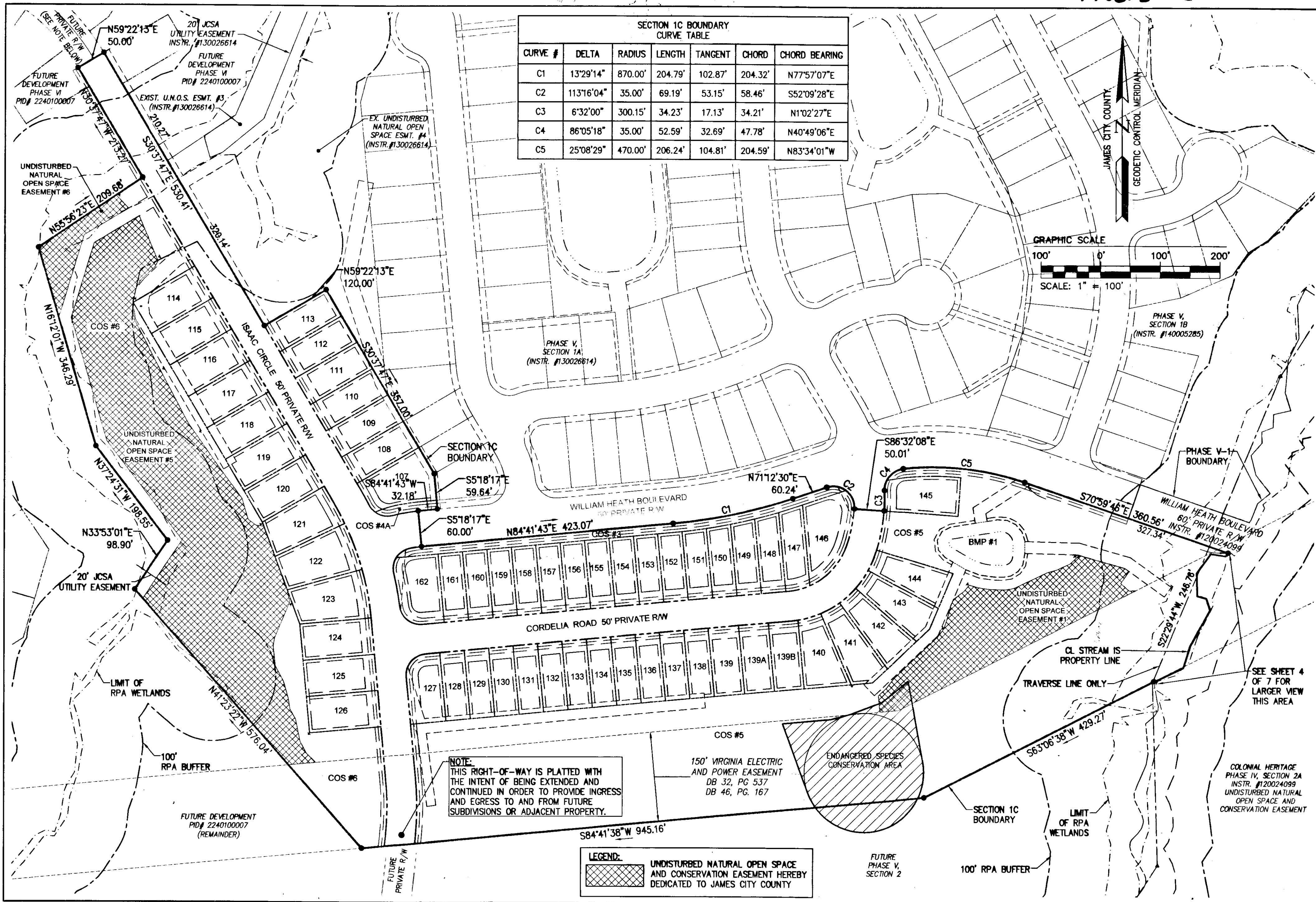


SECTION 1C BOUNDARY CURVE TABLE

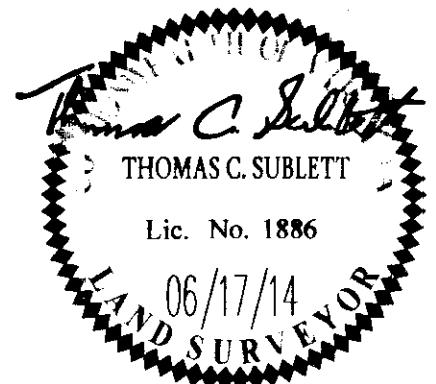
CURVE #	DELTA	RADIUS	LENGTH	TANGENT	CHORD	CHORD BEARING
C1	13°29'14"	870.00'	204.79'	102.87'	204.32'	N77°57'07"E
C2	113°16'04"	35.00'	69.19'	53.15'	58.46'	S52°09'28"E
C3	6°32'00"	300.15'	34.23'	17.13'	34.21'	N1°02'27"E
C4	86°05'18"	35.00'	52.59'	32.69'	47.78'	N40°49'06"E
C5	25°08'29"	470.00'	206.24'	104.81'	204.59'	N83°34'01"W



NOTE:
THIS RIGHT-OF-WAY IS PLATTED WITH THE INTENT OF BEING EXTENDED AND CONTINUED IN ORDER TO PROVIDE INGRESS AND EGRESS TO AND FROM FUTURE SUBDIVISIONS OR ADJACENT PROPERTY.

LEGEND:
 UNDISTURBED NATURAL OPEN SPACE AND CONSERVATION EASEMENT HEREBY DEDICATED TO JAMES CITY COUNTY

City of Williamsburg & County of James City Circuit Court: This PLAT was recorded on Aug 19 2014	
at 1:50 PM, PG -	
Document # 140013168	
BETSY B. WOOLRIDGE, CLERK	
<i>Robin Smith</i> , Dep. Clerk	
1 06/17/14	RMS
Rev Date Description	Revised By



AES
CONSULTING ENGINEERS
Hampton Roads | Central Virginia | Middle Peninsula

614 Moorefield Park Drive
Richmond, Virginia 23236-3655
Phone: (804) 330-8040
Fax: (804) 330-9840
www.aesva.com

PLAT OF SUBDIVISION
LOTS 107 - 162
**COLONIAL HERITAGE
PHASE V - SECTION 1C**
OWNER / DEVELOPER: COLONIAL HERITAGE, L.L.C.
STONEHOUSE DISTRICT JAMES CITY COUNTY VIRGINIA

Project Contacts: TRS/TCB
Project Number: 8881-51C
Scale: 1"=100' Date: 05/01/14
Sheet Number:
2 OF 7

Large Small Plats Recorded herewith as # 140013168