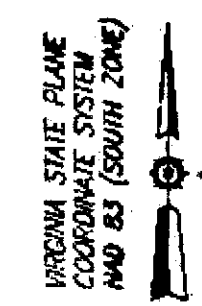
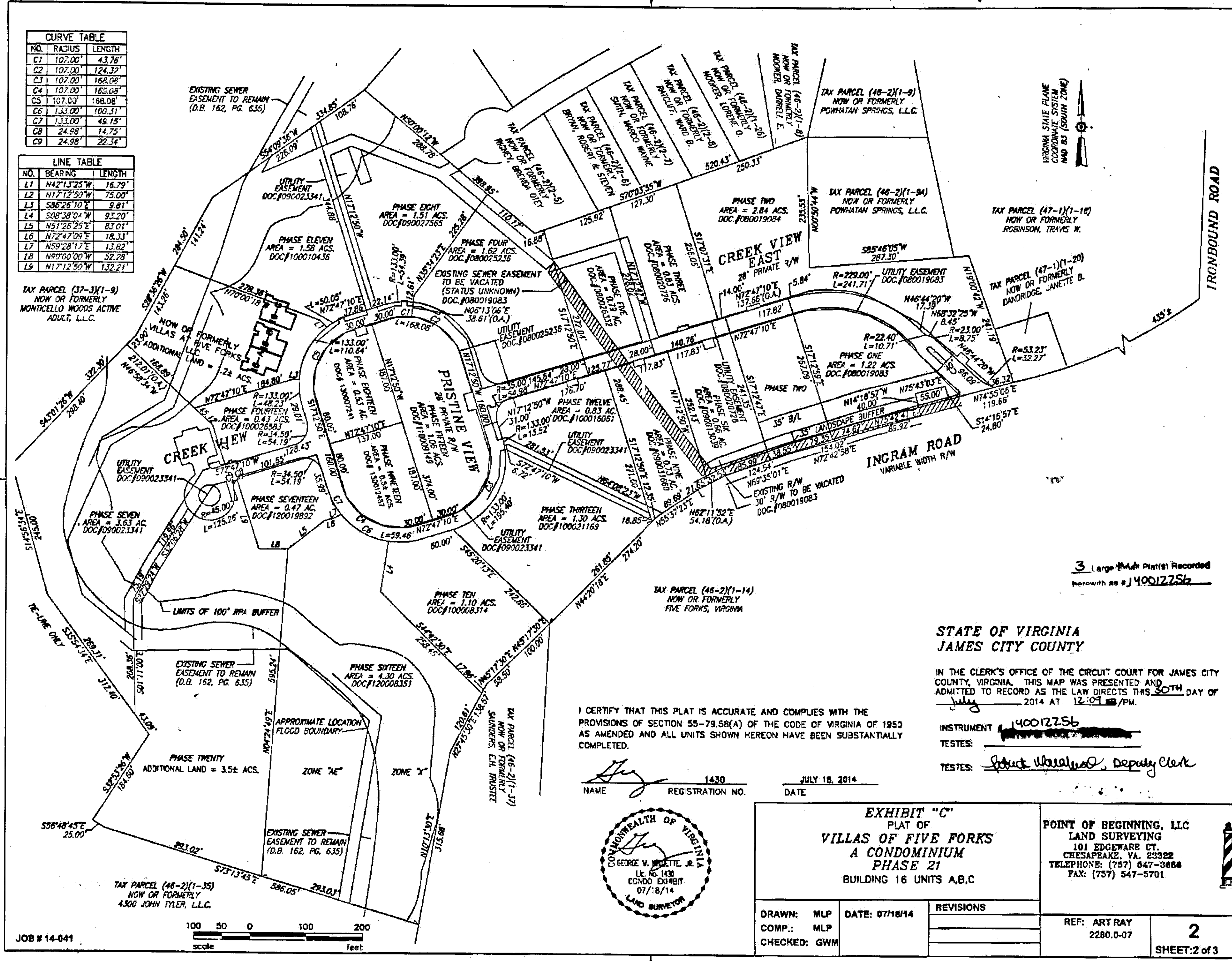


CURVE TABLE		
NO.	RADIUS	LENGTH
C1	107.00'	43.76'
C2	107.00'	124.37'
C3	107.00'	168.08'
C4	107.00'	168.08'
C5	107.00'	168.08'
C6	133.00'	100.31'
C7	133.00'	49.15'
C8	24.98'	14.75'
C9	24.98'	22.34'

LINE TABLE		
NO.	BEARING	LENGTH
L1	N42°13'25"W	16.79'
L2	N17°12'50"W	75.00'
L3	S86°26'10"E	9.81'
L4	S06°38'04"W	93.20'
L5	N51°26'25"E	83.01'
L6	N72°47'09"E	18.33'
L7	N59°28'17"E	13.82'
L8	N97°00'00"W	52.28'
L9	N17°12'50"W	132.21'



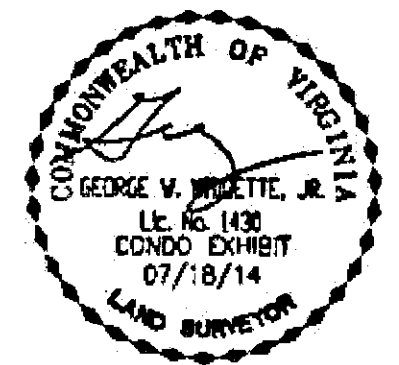
3 Large (A-M) Plats Recorded herewith as # 140012256

STATE OF VIRGINIA  
JAMES CITY COUNTY

IN THE CLERK'S OFFICE OF THE CIRCUIT COURT FOR JAMES CITY COUNTY, VIRGINIA, THIS MAP WAS PRESENTED AND ADMITTED TO RECORD AS THE LAW DIRECTS THIS 30TH DAY OF July 2014 AT 12:09 PM.

I CERTIFY THAT THIS PLAT IS ACCURATE AND COMPLIES WITH THE PROVISIONS OF SECTION 55-79.58(A) OF THE CODE OF VIRGINIA OF 1950 AS AMENDED AND ALL UNITS SHOWN HEREON HAVE BEEN SUBSTANTIALLY COMPLETED.

NAME: *George V. Whittle, Jr.* REGISTRATION NO.: 1430 DATE: JULY 18, 2014



INSTRUMENT: 140012256  
TESTES: *Robert Whittle, Deputy Clerk*

<b>EXHIBIT "C"</b> PLAT OF <b>VILLAS AT FIVE FORKS</b> A CONDOMINIUM PHASE 21 BUILDING 16 UNITS A,B,C		<b>POINT OF BEGINNING, LLC</b> LAND SURVEYING 101 EDGEWARE CT. CHESAPEAKE, VA. 23322 TELEPHONE: (757) 547-3868 FAX: (757) 547-5701
DRAWN: MLP COMP.: MLP CHECKED: GWM	DATE: 07/18/14 REVISIONS: REF: ART RAY 2280.0-07 <b>2</b> SHEET: 2 of 3	