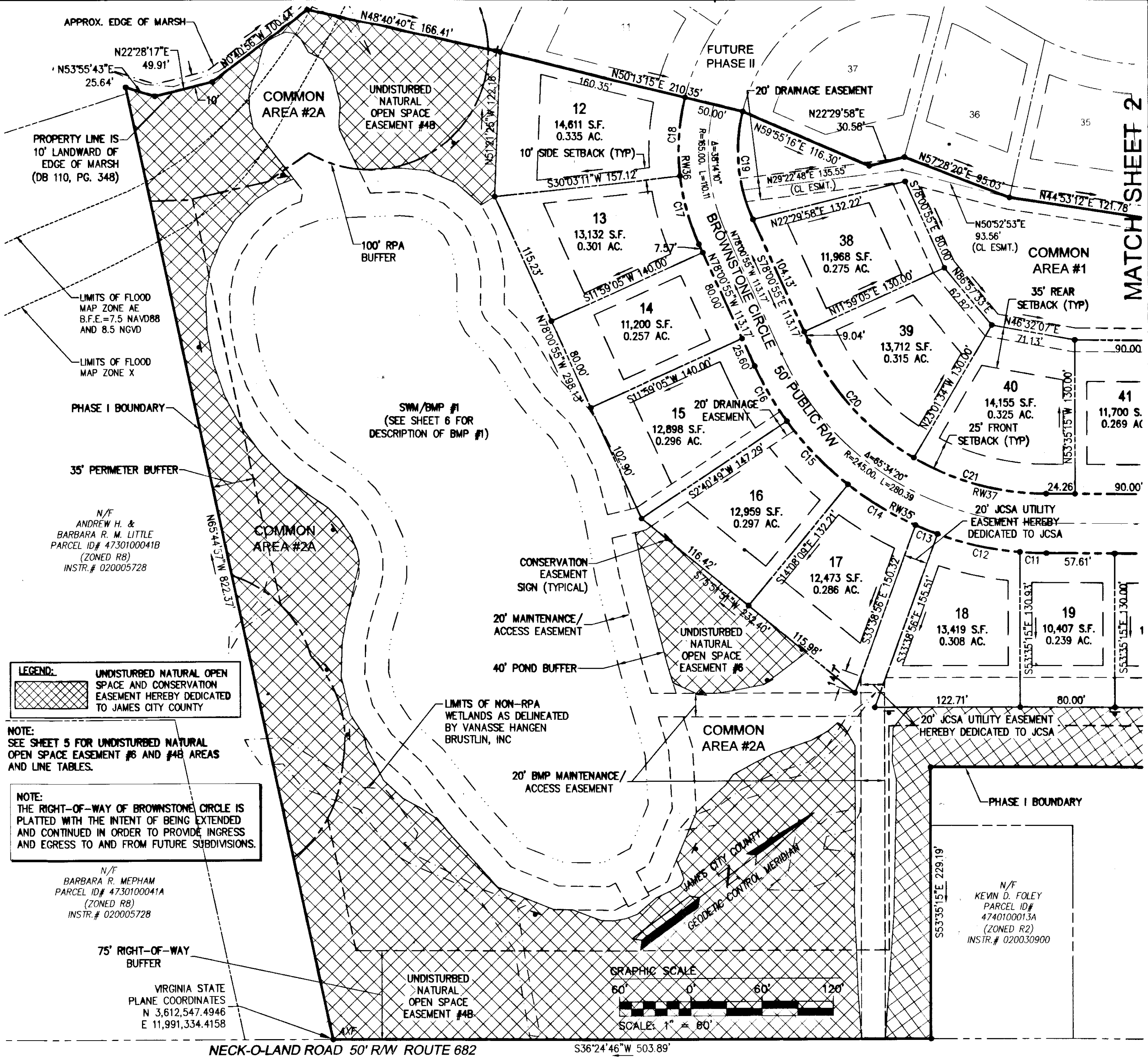


140010816

MATCH SHEET 2

CURVE TABLE						
CURVE #	DELTA	RADIUS	LENGTH	TANGENT	CHORD	CHORD BEARING
C1	8°23'15"	669.56'	98.02'	49.10'	97.93'	N57°51'12"W
C2	49°41'13"	175.00'	151.76'	81.02'	147.05'	N86°53'26"W
C3	11°51'09"	175.00'	36.20'	18.17'	36.14'	S62°20'23"W
C4	11°00'17"	175.00'	33.61'	16.86'	33.56'	S50°54'40"W
C5	6°35'40"	275.00'	31.65'	15.84'	31.63'	S48°42'22"W
C6	71°01'02"	25.00'	30.99'	17.84'	29.04'	S16°29'41"W
C7	18°26'44"	210.00'	67.61'	34.10'	67.31'	S9°47'28"E
C8	18°06'06"	210.00'	66.35'	33.45'	66.07'	S8°28'57"W
C9	18°41'31"	210.00'	68.51'	34.56'	68.21'	S26°52'46"W
C10	0°11'14"	210.00'	0.69'	0.34'	0.69'	S36°19'09"W
C11	4°45'24"	270.00'	22.41'	11.21'	22.41'	S38°47'27"W
C12	15°10'55"	270.00'	71.54'	35.98'	71.33'	S48°45'37"W
C13	4°14'53"	270.00'	20.02'	10.01'	20.01'	S58°28'30"W
C14	14°08'09"	270.00'	66.61'	33.48'	66.44'	S67°40'01"W
C15	15°49'22"	270.00'	74.56'	37.52'	74.33'	S82°38'47"W
C16	11°25'37"	270.00'	53.85'	27.01'	53.76'	N83°43'43"W
C17	18°04'06"	190.00'	59.92'	30.21'	59.67'	N68°58'52"W
C18	20°10'04"	190.00'	66.88'	33.79'	66.53'	N49°51'47"W
C19	38°14'10"	140.00'	93.43'	48.53'	91.70'	S58°53'50"E
C20	35°00'39"	220.00'	134.43'	69.39'	132.35'	N84°28'45"E
C21	30°33'41"	220.00'	117.35'	60.11'	115.96'	N51°41'36"E
C22	2°37'45"	160.00'	7.34'	3.67'	7.34'	N35°05'53"E
C23	63°38'56"	160.00'	177.74'	99.30'	168.74'	S15°37'32"W
C24	10°45'34"	160.00'	30.05'	15.07'	30.00'	N35°14'43"W
C25	35°43'53"	160.00'	99.78'	51.57'	98.17'	N58°29'26"W
C26	15°08'53"	210.00'	55.52'	27.92'	55.36'	S68°46'56"E
C27	17°22'34"	210.00'	63.69'	32.09'	63.44'	N52°31'12"W
C28	87°28'44"	25.00'	38.17'	23.92'	34.57'	N87°34'18"W
C29	3°16'49"	225.00'	12.88'	6.44'	12.88'	S47°02'56"W
C30	9°07'31"	225.00'	35.83'	17.96'	35.80'	S49°58'17"W
C31	63°25'09"	225.00'	249.05'	139.01'	236.53'	S86°14'37"W

RW CURVE TABLE						
CURVE #	DELTA	RADIUS	LENGTH	TANGENT	CHORD	CHORD BEARING
RW33	72°32'39"	175.00'	221.57'	128.42'	207.07'	S81°40'51"W
RW34	55°25'35"	210.00'	203.15'	110.31'	195.32'	S8°41'58"W
RW35	65°34'20"	270.00'	309.00'	173.91'	292.41'	S69°11'55"W
RW36	38°14'10"	190.00'	126.80'	65.86'	124.46'	N58°53'50"W
RW37	65°34'20"	220.00'	251.78'	141.70'	238.26'	N69°11'55"E
RW38	112°46'08"	160.00'	314.91'	240.68'	266.49'	N19°58'19"W
RW39	32°31'27"	210.00'	119.21'	61.26'	117.61'	S60°05'39"E
RW40	72°32'39"	225.00'	284.88'	165.11'	266.23'	N81°40'51"E



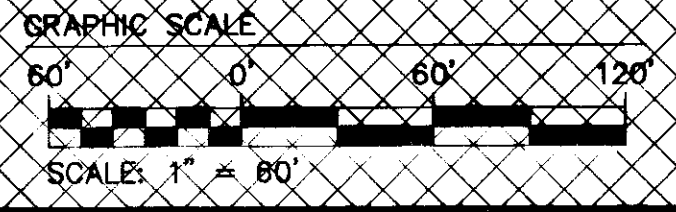
LEGEND:
 UNDISTURBED NATURAL OPEN SPACE AND CONSERVATION EASEMENT HEREBY DEDICATED TO JAMES CITY COUNTY

NOTE:
 SEE SHEET 5 FOR UNDISTURBED NATURAL OPEN SPACE EASEMENT #6 AND #4B AREAS AND LINE TABLES.

NOTE:
 THE RIGHT-OF-WAY OF BROWNSTONE CIRCLE IS PLATTED WITH THE INTENT OF BEING EXTENDED AND CONTINUED IN ORDER TO PROVIDE INGRESS AND EGRESS TO AND FROM FUTURE SUBDIVISIONS.

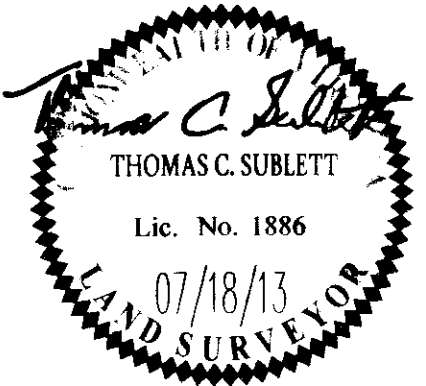
N/F
 BARBARA R. MEPHAM
 PARCEL ID# 4730100041A
 (ZONED R8)
 INSTR.# 020005728

VIRGINIA STATE
 PLANE COORDINATES
 N 3,612,547.4946
 E 11,991,334.4158



NECK-O-LAND ROAD 50' R/W ROUTE 682 S36°24'46"W 503.89'

City of Williamsburg & County of James City Circuit Court: This PLAT was recorded on		
at <u>3:47 PM</u> on <u>July 2, 2014</u>		Large Small Plat(s) Recorded
Document # <u>140010816</u>		herewith as # <u>140010816</u>
BETSY B. WOOLRIDGE, CLERK		
_____, Dep. Clerk		
Rev	Date	Description



AES
 CONSULTING ENGINEERS
 5248 Olde Towne Road, Suite 1
 Williamsburg, Virginia 23188
 Phone: (757) 253-0040
 Fax: (757) 220-8994
 www.aesva.com
 Hampton Roads | Central Virginia | Middle Peninsula

SUBDIVISION PLAT
PHASE I, LOTS 12-27 AND 38-46
THE COTTAGES AT STONE HAVEN
 OWNER/DEVELOPER: NOL, L.L.C.
 BERKELEY DISTRICT JAMES CITY COUNTY VIRGINIA

Project Contacts: TCS
 Project Number: 9700-02
 Scale: 1"=80' Date: 07/18/13
 Sheet Number: **3 of 6**