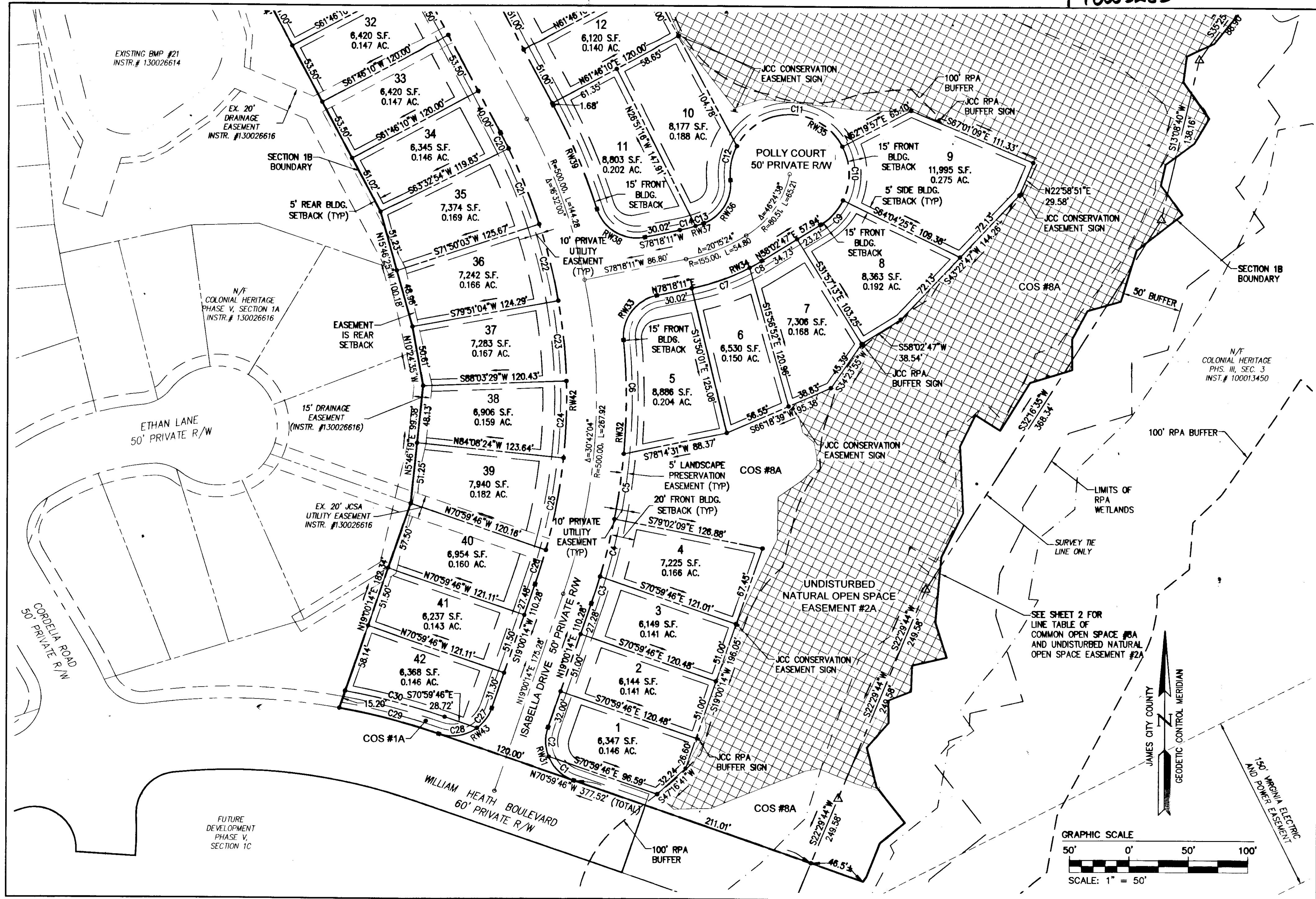
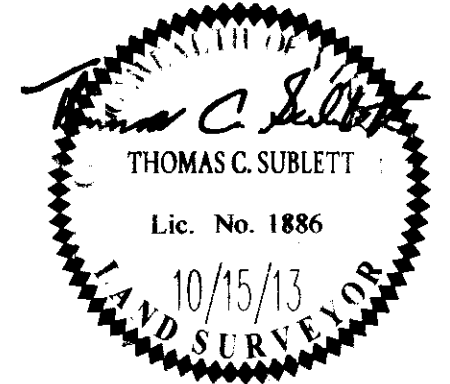


140005285



Rev.	Date	Description	Reviewed By

City of Williamsburg & County of James City
 Circuit Court: This PLAT was recorded on
April 2014
 at 10:06 AM/PM, PB PG
 Document # 140005285
 BETSY B. WOOLRIDGE, CLERK
[Signature] Dep. Clerk



AES
 CONSULTING ENGINEERS
 Hampton Roads | Central Virginia | Middle Peninsula

5 Large Plat(s) Recorded
 herewith as # 140005285

614 Moorefield Park Drive
 Richmond, Virginia 23236-3655
 Phone: (804) 330-8040
 Fax: (804) 330-9840
 www.aesva.com

PLAT OF SUBDIVISION
 LOTS 1 - 42
**COLONIAL HERITAGE
 PHASE V - SECTION 1B**
 OWNER / DEVELOPER: COLONIAL HERITAGE, L.L.C.
 STONEHOUSE DISTRICT JAMES CITY COUNTY VIRGINIA

Project Contacts:	TRS/TCS
Project Number:	8881-51B
Scale:	1"=50'
Date:	10/15/13
Sheet Number	3 OF 5