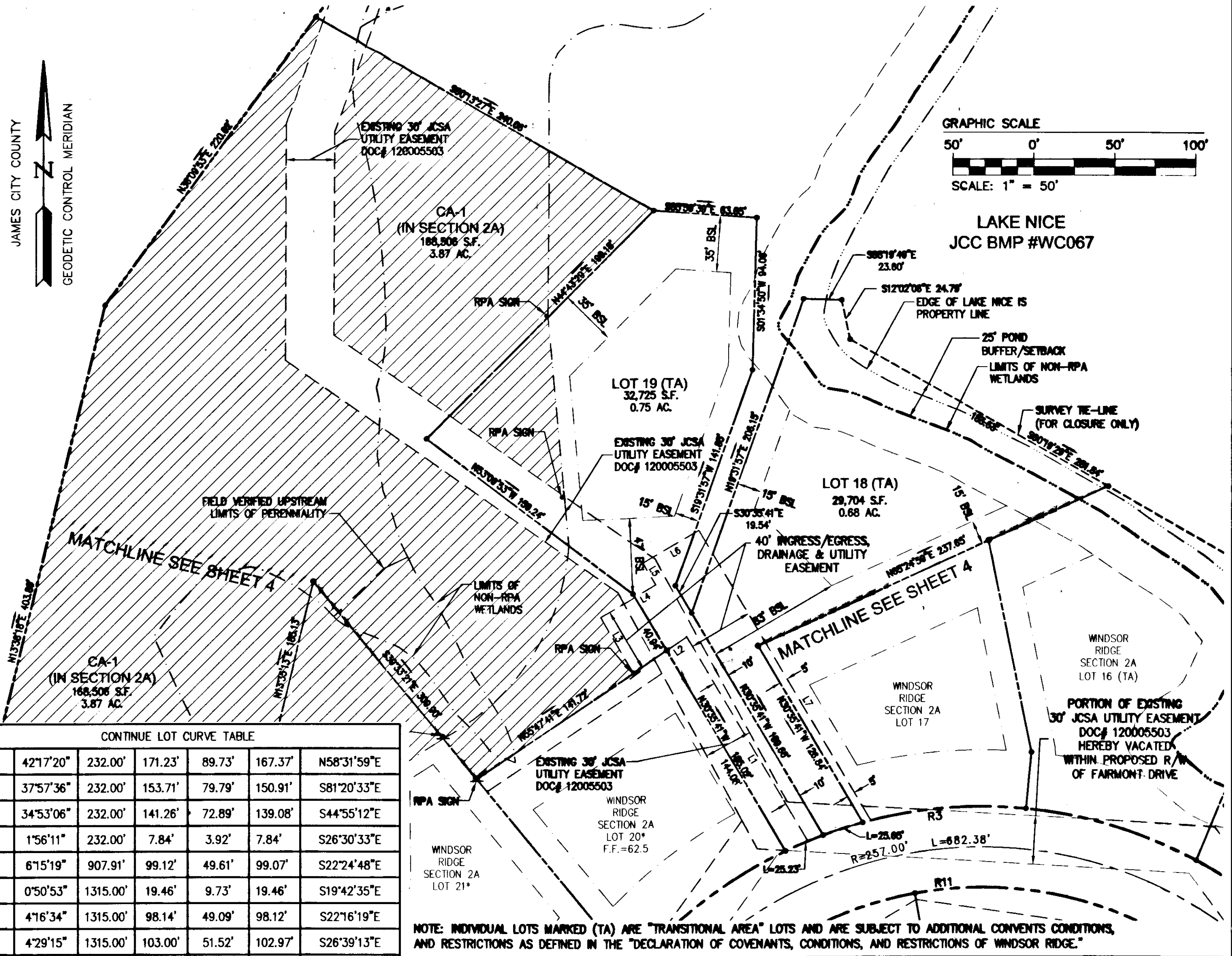


140003171

RIGHT-OF-WAY CURVE TABLE						
CURVE #	DELTA	RADIUS	LENGTH	TANGENT	CHORD	CHORD BEARING
R3	152°07'50"	282.00'	748.76'	1136.56'	547.40'	N78°23'38"E
R4	6°15'19"	957.91'	104.58'	52.34'	104.53'	S22°24'48"E
R5	17°44'15"	1265.00'	391.62'	197.39'	390.05'	S28°09'16"E
R6	240°00'00"	50.00'	209.44'		86.60'	S57°48'13"E
R7	17°02'00"	475.00'	141.21'	71.13'	140.69'	S22°41'14"E
R8	17°02'00"	525.00'	156.07'	78.62'	155.50'	N22°41'14"W
R9	17°44'15"	1315.00'	407.10'	205.19'	405.47'	N28°09'16"W
R10	6°15'19"	907.91'	99.12'	49.61'	99.07'	N22°24'48"W
R11	152°07'50"	232.00'	616.00'	935.04'	450.34'	S78°23'38"W

LOT CURVE TABLE						
LOT #	DELTA	RADIUS	LENGTH	TANGENT	CHORD	CHORD BEARING
3	2°43'29"	475.00'	22.59'	11.30'	22.59'	N29°50'30"W
4	13°20'43"	475.00'	110.64'	55.57'	110.39'	N21°48'24"W
6A	2°48'15"	400.00'	19.58'	9.79'	19.58'	N15°34'22"W
6B	79°10'16"	35.00'	48.36'	28.94'	44.61'	N22°36'38"E
7	20°53'42"	50.00'	18.23'	9.22'	18.13'	N51°44'57"E
8	67°17'17"	50.00'	58.72'	33.28'	55.40'	N7°39'27"E
9	53°32'45"	50.00'	46.73'	25.23'	45.05'	N52°45'34"W
10	41°19'33"	50.00'	36.06'	18.86'	35.29'	S79°48'17"W
11A	56°56'44"	50.00'	49.69'	27.12'	47.67'	S30°40'08"W
11B	60°00'00"	50.00'	52.36'	28.87'	50.00'	S32°11'46"W
11C	84°57'08"	35.00'	51.89'	32.04'	47.27'	N75°19'40"W
11D	4°10'18"	400.00'	29.12'	14.57'	29.12'	N34°56'15"W
11E	2°40'09"	1265.00'	58.93'	29.47'	58.93'	N35°41'19"W
12	8°24'16"	1265.00'	185.56'	92.95'	185.39'	N30°09'06"W
13A	6°39'49"	1265.00'	147.12'	73.65'	147.04'	N22°37'03"W
13B	0°18'52"	957.91'	5.26'	2.63'	5.26'	N19°26'35"W
14	5°56'26"	957.91'	99.32'	49.70'	99.28'	N22°34'14"W
15	20°07'08"	282.00'	99.02'	50.03'	98.51'	N35°36'01"W
CA-3	16°21'07"	282.00'	80.48'	40.52'	80.21'	N53°50'09"W
16	22°27'59"	282.00'	110.58'	56.01'	109.87'	N73°14'42"W
17	20°41'34"	282.00'	101.85'	51.48'	101.29'	S85°10'32"W
18	5°12'40"	282.00'	25.65'	12.83'	25.64'	S72°13'25"W
19	5°07'36"	282.00'	25.23'	12.62'	25.22'	S67°03'18"W
20	24°18'11"	282.00'	119.62'	60.72'	118.72'	S52°20'24"W
21	16°55'54"	282.00'	83.34'	41.97'	83.03'	S31°43'21"W
22	17°20'12"	282.00'	85.33'	42.99'	85.00'	S14°35'18"W
23	3°35'29"	282.00'	17.68'	8.84'	17.67'	S4°07'27"W
25A	10°04'12"	225.00'	39.55'	19.82'	39.49'	N82°38'11"W
25B	90°00'00"	25.00'	39.27'	25.00'	35.36'	N42°40'17"W
25C	1°26'50"	232.00'	5.86'	2.93'	5.86'	N3°03'08"E
26	33°36'47"	232.00'	136.10'	70.07'	134.16'	N20°34'56"E

CONTINUE LOT CURVE TABLE						
27	42°17'20"	232.00'	171.23'	89.73'	167.37'	N58°31'59"E
28	37°57'36"	232.00'	153.71'	79.79'	150.91'	S81°20'33"E
29	34°53'06"	232.00'	141.26'	72.89'	139.08'	S44°55'12"E
30A	1°56'11"	232.00'	7.84'	3.92'	7.84'	S26°30'33"E
30B	6°15'19"	907.91'	99.12'	49.61'	99.07'	S22°24'48"E
30C	0°50'53"	1315.00'	19.46'	9.73'	19.46'	S19°42'35"E
31	4°16'34"	1315.00'	98.14'	49.09'	98.12'	S22°16'19"E
32	4°29'15"	1315.00'	103.00'	51.52'	102.97'	S26°39'13"E
33	4°37'34"	1315.00'	106.18'	53.12'	106.15'	S31°12'38"E
34A	3°29'59"	1315.00'	80.32'	40.17'	80.31'	S35°16'24"E
34B	2°14'26"	350.00'	13.69'	6.84'	13.69'	S35°54'11"E
34C	96°58'44"	35.00'	59.24'	39.55'	52.42'	S13°42'24"W
34D	5°44'52"	170.00'	17.05'	8.53'	17.05'	S65°04'12"W
35A	2°59'17"	220.00'	11.47'	5.74'	11.47'	N63°41'25"E
35B	103°37'59"	35.00'	63.31'	44.50'	55.02'	S65°59'14"E
36	9°23'51"	525.00'	86.11'	43.15'	86.01'	S18°52'10"E
37	7°38'08"	525.00'	69.96'	35.03'	69.91'	S27°23'10"E



INGRESS/EGRESS EASEMENT LINE TABLE		
LINE	BEARING	LENGTH
L1	N30°35'41"W	146.77'
L2	S55°47'41"W	39.61'
L3	N30°29'32"W	39.95'
L4	N59°24'19"E	39.46'
L5	N30°35'41"W	15.69'
L6	N59°24'19"E	40.00'
L7	S30°35'41"E	208.64'

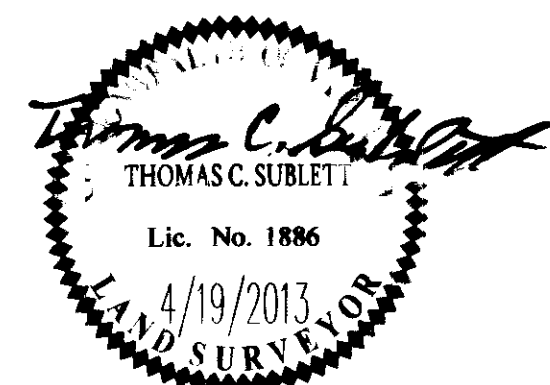
**LEGEND:**

DENOTES 25% OR GREATER SLOPES ON SLOPE BUFFER LOTS (REFER TO DEED OF BUFFER EASEMENTS DOC. #120005628)

AREA OF NATURAL OPEN SPACE DEDICATED TO JAMES CITY COUNTY (191,075 SF ± OR 4.39 AC ±)

**THIS SHEET ADDRESSES LOTS 18-19**

City of Williamsburg & County of James City			
Circuit Court: This PLAT was recorded on 2-27-2014			
at 1:54 PM, PG			
Document # 140003171			
BETSY B. WOOLRIDGE, CLERK			
C. S. G. L. L. L., Dep. Clerk			
2	2/10/14	REVISED PER ENGINEERING RESOURCE PROTECTION COMMENTS	JFS
1	6/11/13	REVISED PER COUNTY COMMENTS	JFS
Rev.	Date	Description	Revised By



5 Large/Small-Plat(s) Recorded herewith as # 140003171

**RES**  
CONSULTING ENGINEERS

5248 Old Towne Road, Suite 1  
Williamsburg, Virginia 23188  
Phone: (757) 253-0040  
Fax: (757) 220-8994  
www.resva.com

Hampton Roads | Central Virginia | Middle Peninsula

**PLAT OF SUBDIVISION WINDSOR RIDGE SECTION 2A LOTS 1-37 (37 LOTS) BEING THE PROPERTY OF BOCA LAND INVESTORS, L.L.C.**

STONEHOUSE DISTRICT JAMES CITY COUNTY VIRGINIA

Project Contacts	TCB
Project Number	8223-13
Scale:	Date:
1" = 50'	4/19/13
Sheet Number	
<b>5 OF 5</b>	