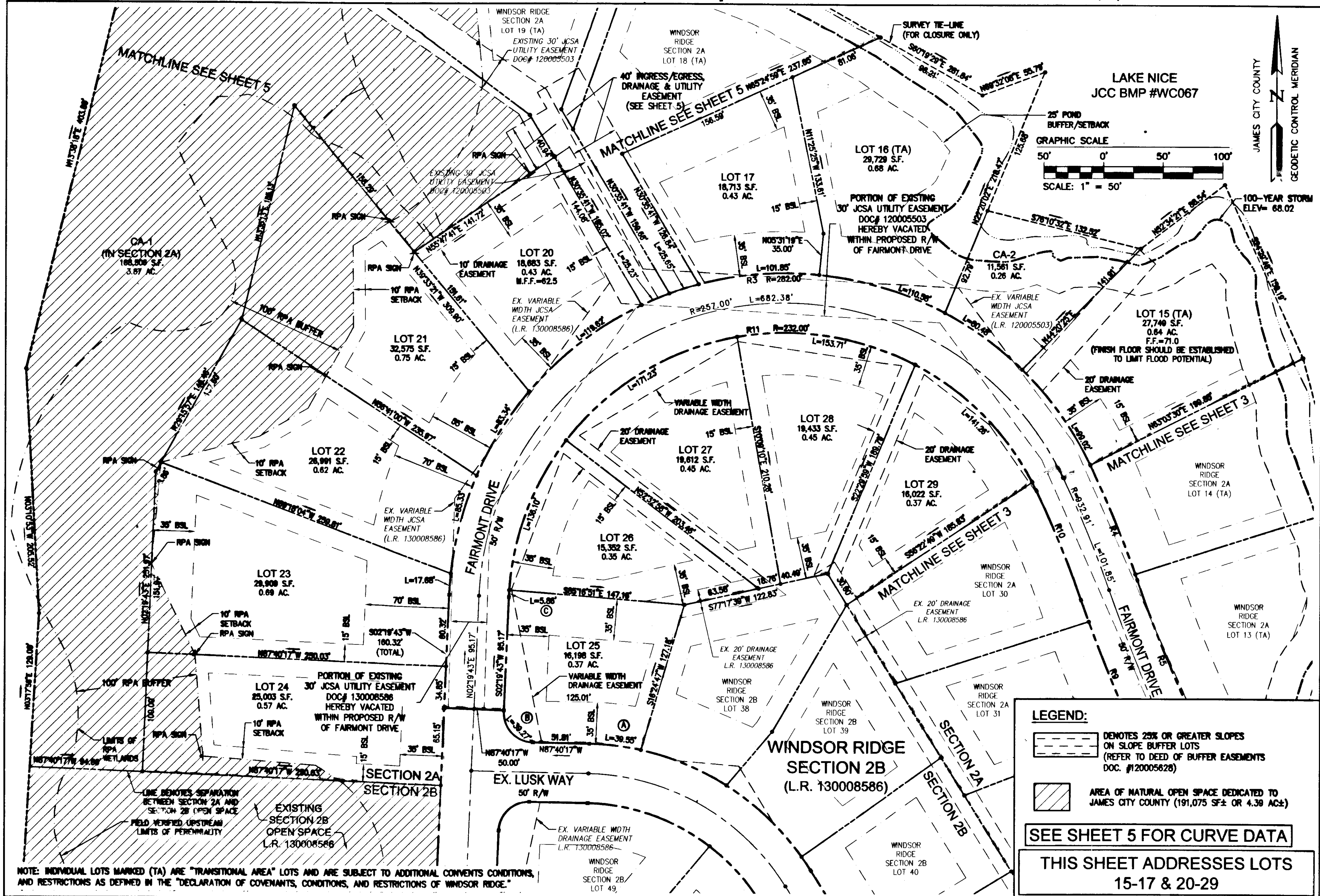


140003171



LEGEND:

DENOTES 25% OR GREATER SLOPES ON SLOPE BUFFER LOTS (REFER TO DEED OF BUFFER EASEMENTS DOC. #120005628)

AREA OF NATURAL OPEN SPACE DEDICATED TO JAMES CITY COUNTY (191,075 SF± OR 4.38 AC±)

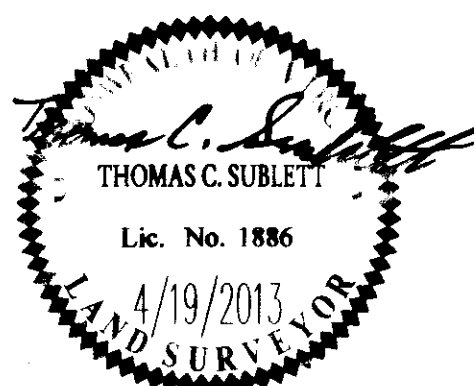
SEE SHEET 5 FOR CURVE DATA

THIS SHEET ADDRESSES LOTS 15-17 & 20-29

City of Williamsburg & County of James City
 Circuit Court: This PLAT was recorded on
 2-27-2014

at 1:54 AM/PM, PB PG
 Document # 140003171
 BETSY B. WOOLRIDGE, CLERK
 Thomas C. Sublett, Dep. Clerk

2	2/10/14		REVISIONS	JFS
1	6/11/13		REVISED PER COUNTY COMMENTS	JFS
Rev	Date	Description		Revised By



5 Large Small Plat(s) Recorded
 herewith as # 140003171

RES
 CONSULTING ENGINEERS

5248 Old Towne Road, Suite 1
 Williamsburg, Virginia 23186
 Phone: (757) 253-0040
 Fax: (757) 220-8994
 www.resva.com

Hampton Roads | Central Virginia | Middle Peninsula

PLAT OF SUBDIVISION
WINDSOR RIDGE
SECTION 2A
 LOTS 1-37 (37 LOTS)
 BEING THE PROPERTY OF
 BOCA LAND INVESTORS, LLC.

STONEHOUSE DISTRICT JAMES CITY COUNTY VIRGINIA

Project Contacts: TCS

Project Number: 8223-13

Scale: 1" = 50' Date: 4/18/13

Sheet Number
4 OF 5