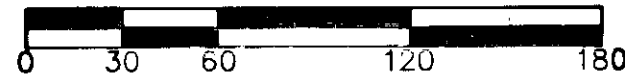
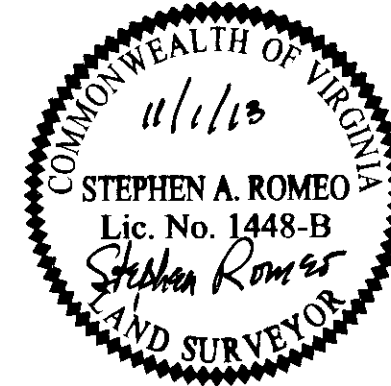


140001755

PLAN SCALE: 1"=60'
GRAPHIC SCALE IN FEET



PLAT OF CORRECTION TO CORRECT DATA ON SHEETS 2 AND 3 OF RECORDED PLAT INSTRUMENT NO. 060018285 DATED 7/17/06 AND RECORDED 7/27/2006 IN THE CITY OF WILLIAMSBURG & JAMES CITY COUNTY CIRCUIT COURT.
SHEET 2:
CORRECT REAR LOT LINE DISTANCE ON LOTS 59 AND 60.
CORRECT FRONT LOT LINE DISTANCE ON LOT 66.
CORRECT LOT 60 ACREAGE
SHEET 3:
CORRECT BEARING FOR C34, FRONT LOT LINE ON LOT 59

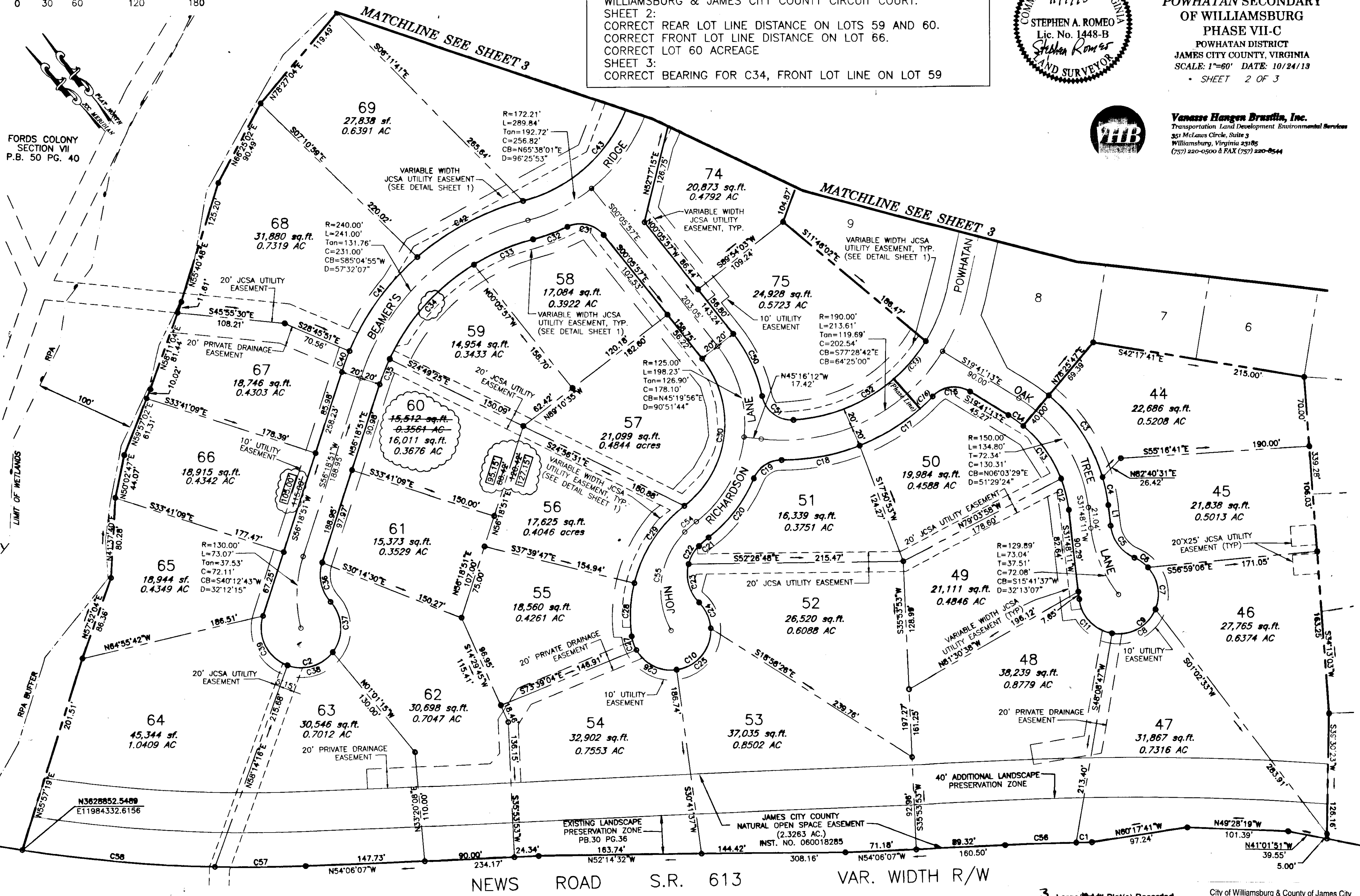


PLAT OF CORRECTION
SUBDIVISION OF
POWHATAN SECONDARY
OF WILLIAMSBURG
PHASE VII-C
POWHATAN DISTRICT
JAMES CITY COUNTY, VIRGINIA
SCALE: 1"=60' DATE: 10/24/19
SHEET 2 OF 3



Vanasse Hangen Brustlin, Inc.
Transportation Land Development Environmental Services
351 McAuliffe Circle, Suite 3
Williamsburg, Virginia 23185
(757) 220-0500 & FAX (757) 220-0544

FORDS COLONY SECTION VII P.B. 50 PG. 40



NEWS ROAD S.R. 613 VAR. WIDTH R/W

3 Large Plat(s) Recorded herewith as # 140001755

City of Williamsburg & County of James City Circuit Court: This PLAT was recorded on 3 February 2014 at 11:23 AM/PM, PB PG Document # 140001755 BETSY B. WOOLRIDGE, CLERK