

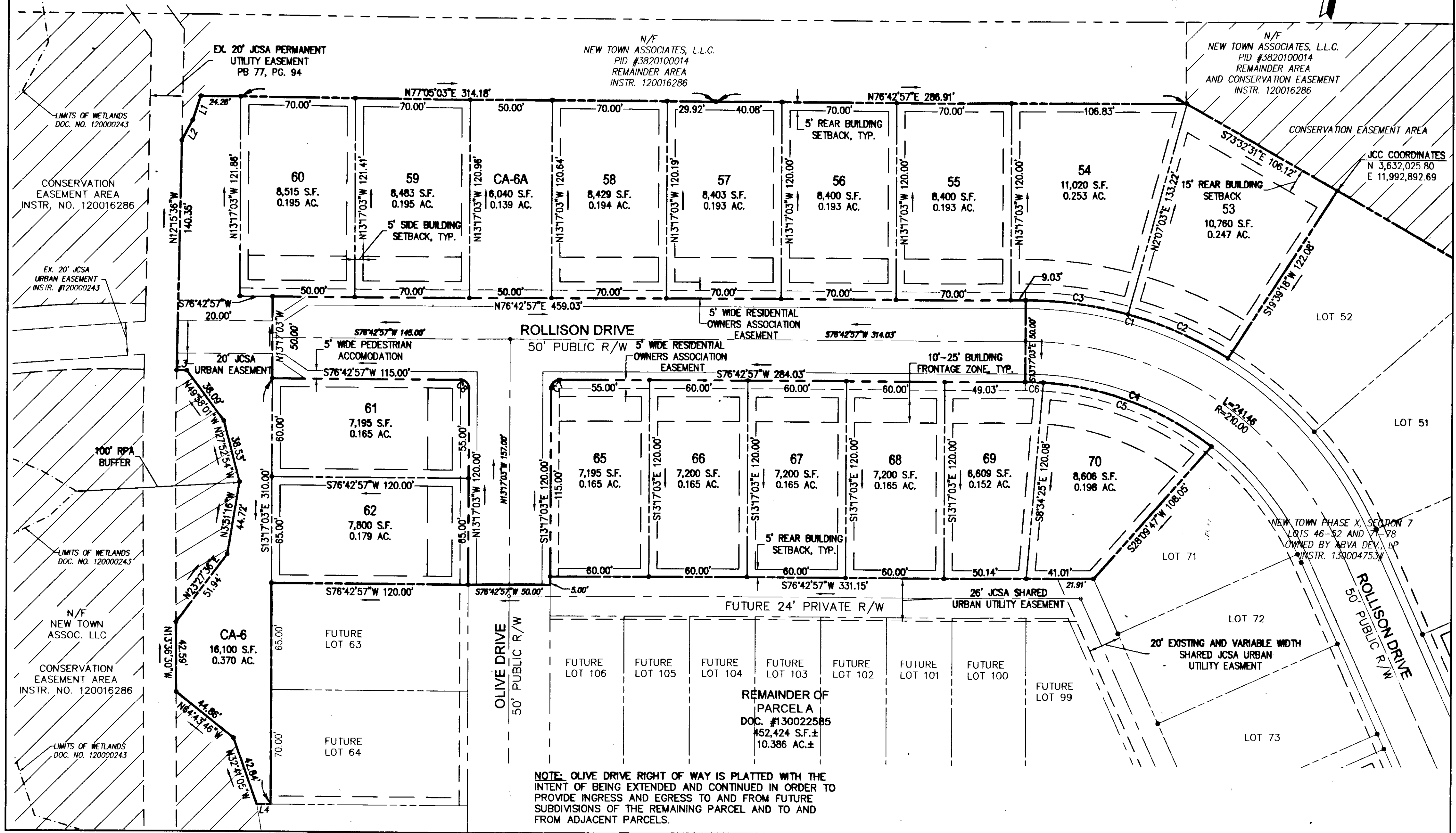
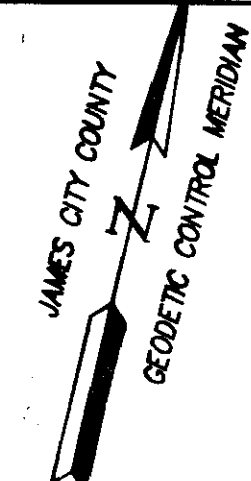
140000709

CURVE TABLE						
CURVE #	DELTA	RADIUS	LENGTH	TANGENT	CHORD	CHORD BEARING
C1	31°43'12"	235.00'	130.10'	66.76'	128.45'	N87°25'27"W
C2	16°19'06"	235.00'	66.93'	33.69'	66.70'	N79°43'24"W
C3	15°24'06"	235.00'	63.17'	31.78'	62.98'	S84°25'00"W
C4	37°53'46"	185.00'	122.36'	63.51'	120.14'	S84°20'10"E

CURVE TABLE						
CURVE #	DELTA	RADIUS	LENGTH	TANGENT	CHORD	CHORD BEARING
C5	34°29'51"	185.00'	111.39'	57.44'	109.71'	N82°38'13"W
C6	3°23'55"	185.00'	10.97'	5.49'	10.97'	S78°24'55"W
C7	90°00'00"	5.00'	7.85'	5.00'	7.07'	S31°42'57"W
C8	90°00'00"	5.00'	7.85'	5.00'	7.07'	N58°17'03"W

LINE TABLE		
LINE	BEARING	LENGTH
L1	N5°10'49"E	15.40'
L2	N14°43'08"E	14.11'
L3	S77°44'24"W	6.08'
L4	S76°42'57"W	8.57'

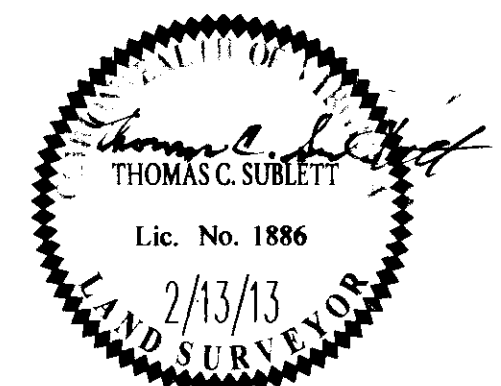
N/F
COMMONWEALTH OF VIRGINIA
EASTERN STATE HOSPITAL
PARCEL ID #3910100152
DB 34, PG. 375



NOTE: OLIVE DRIVE RIGHT OF WAY IS PLATTED WITH THE INTENT OF BEING EXTENDED AND CONTINUED IN ORDER TO PROVIDE INGRESS AND EGRESS TO AND FROM FUTURE SUBDIVISIONS OF THE REMAINING PARCEL AND TO AND FROM ADJACENT PARCELS.

1	11/7/13	REVISED PER COUNTY COMMENTS	TCS
Rev	Date	Description	Revised By

City of Williamsburg & County of James City
Circuit Court: This PLAT was recorded on
10 January 2014
at **3:58** PM, PB PG
Document # **140000709**
BETSY B. WOOLRIDGE, CLERK
Joseph H. Williams, Jr., Dep. Clerk



2 Large Plat(s) Recorded
herewith as # **140000709**

AES
CONSULTING ENGINEERS

5248 Old Towne Road, Suite 1
Williamsburg, Virginia 23188
Phone: (757) 253-0040
Fax: (757) 220-8994
www.aesva.com

Hampton Roads | Central Virginia | Middle Peninsula

PLAT OF SUBDIVISION
PHASE X, SECTION 7
LOTS 53-62 AND 65-70
NEW TOWN
OWNED BY ABVA DEVELOPMENT, LP

JAMESTOWN DISTRICT JAMES CITY COUNTY VIRGINIA

Project Contacts:	TCS/JFS
Project Number:	6632-07-05B
Scale:	1" = 40'
Date:	2/13/2013
Sheet Number	2 of 2