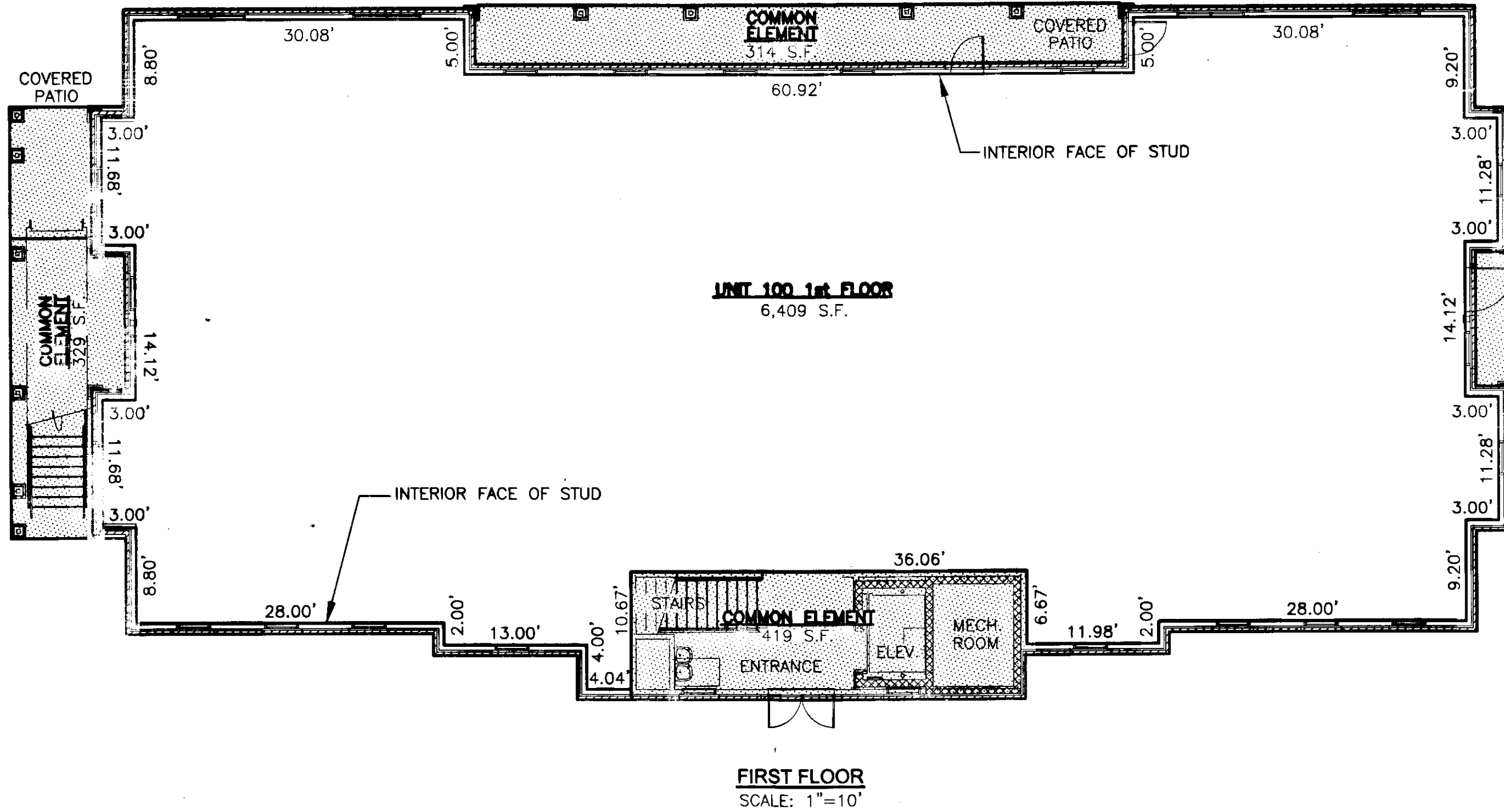


130028163

PLANS OF 434 McLAWS
McLAWS PROFESSIONAL CENTER, A CONDOMINIUM
ROBERTS DISTRICT, JAMES CITY COUNTY, VIRGINIA
DATE: 12-18-2013 SCALE: 1" = 10' JOB# 07-340
SHEET 2 OF 3

LandTech
Resources, Inc.
Surveying • Engineering • GPS
205-E-Bulifants Blvd., Williamsburg, VA 23188
Phone: (757) 565-1677 Fax: (757) 565-0782
web: landtechresources.com



UNIT 100 1st FLOOR
6,409 S.F.

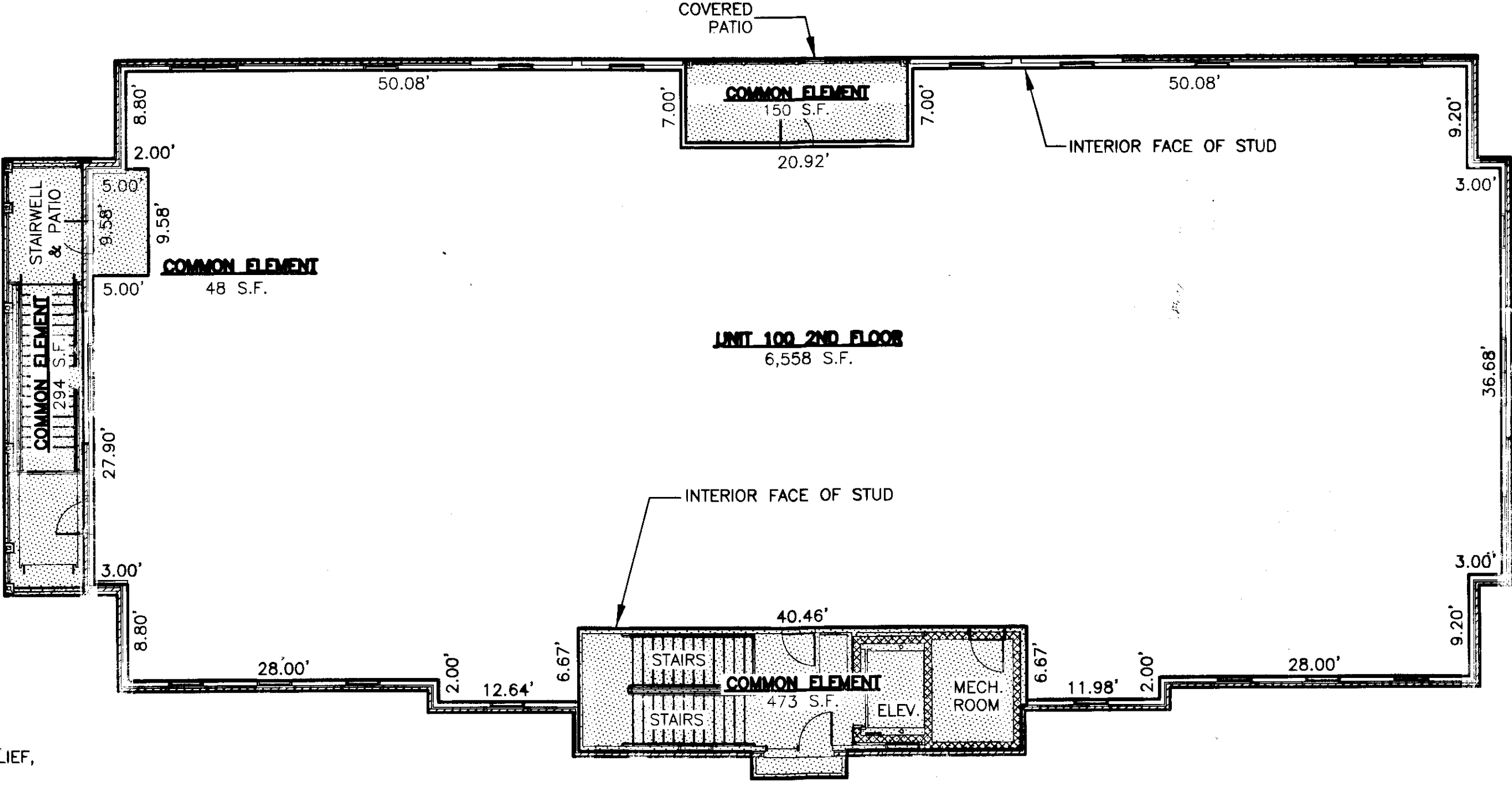
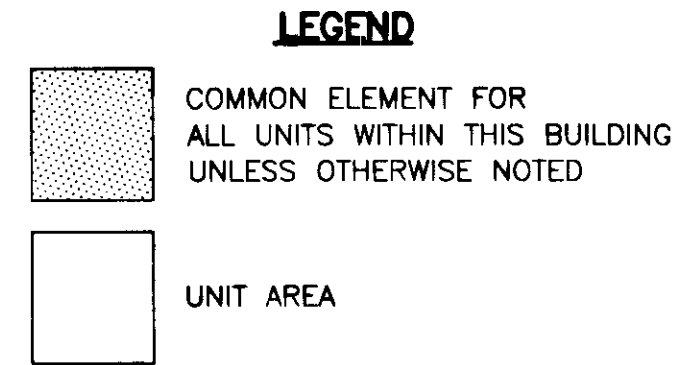
FIRST FLOOR
SCALE: 1"=10'

COMMON ELEMENT
37 S.F.

NOTE:

A. Unit Boundaries. A Unit consists of a portion of the Condominium designed and intended for individual ownership and use. The boundary of the individual units are as set out in the Declaration of Condominium recorded as Instrument No. 100028271 in the Circuit Court of the County of James City.

B. Air Conditioning/Heating/Mechanical. The air conditioning, refrigerating, ventilation and heating equipment and water, sewer utility and electrical lines within the Unit, and the air conditioning, refrigerating, ventilation and heating equipment, water, sewer, utility and electrical lines, and other apparatus in connection therewith, which serve one Unit, wherever located, shall be owned by the Unit Owner as part of the Unit and are not part of Common Elements.



UNIT 100 2ND FLOOR
6,558 S.F.

SECOND FLOOR
SCALE: 1"=10'

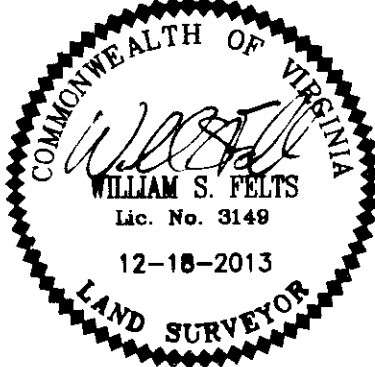
COMMON ELEMENT
48 S.F.

COMMON ELEMENT
150 S.F.

SURVEYORS CERTIFICATE

I HEREBY CERTIFY THAT TO THE BEST OF MY KNOWLEDGE OR BELIEF, THIS PLAT IS ACCURATE AND COMPLIES WITH THE PROVISIONS OF SECTION 55-79.58 (B) OF THE CODE OF VIRGINIA 1950 AS AMENDED AND THAT ALL UNITS DEPICTED HEREON HAVE BEEN SUBSTANTIALLY COMPLETED.

William S. Felts
STATE CERTIFIED LAND SURVEYOR
12-18-2013
DATE



3
130028163

City of Williamsburg & County of James City
Circuit Court: This PLAT was recorded on
12-27-2013
at 1:54 AM/PM, PG 2
Document # 130028163
BETSY B. WOOLRIDGE, CLERK
Betsy Woolridge, Dep. Clerk