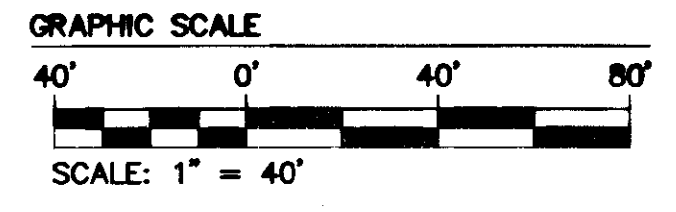
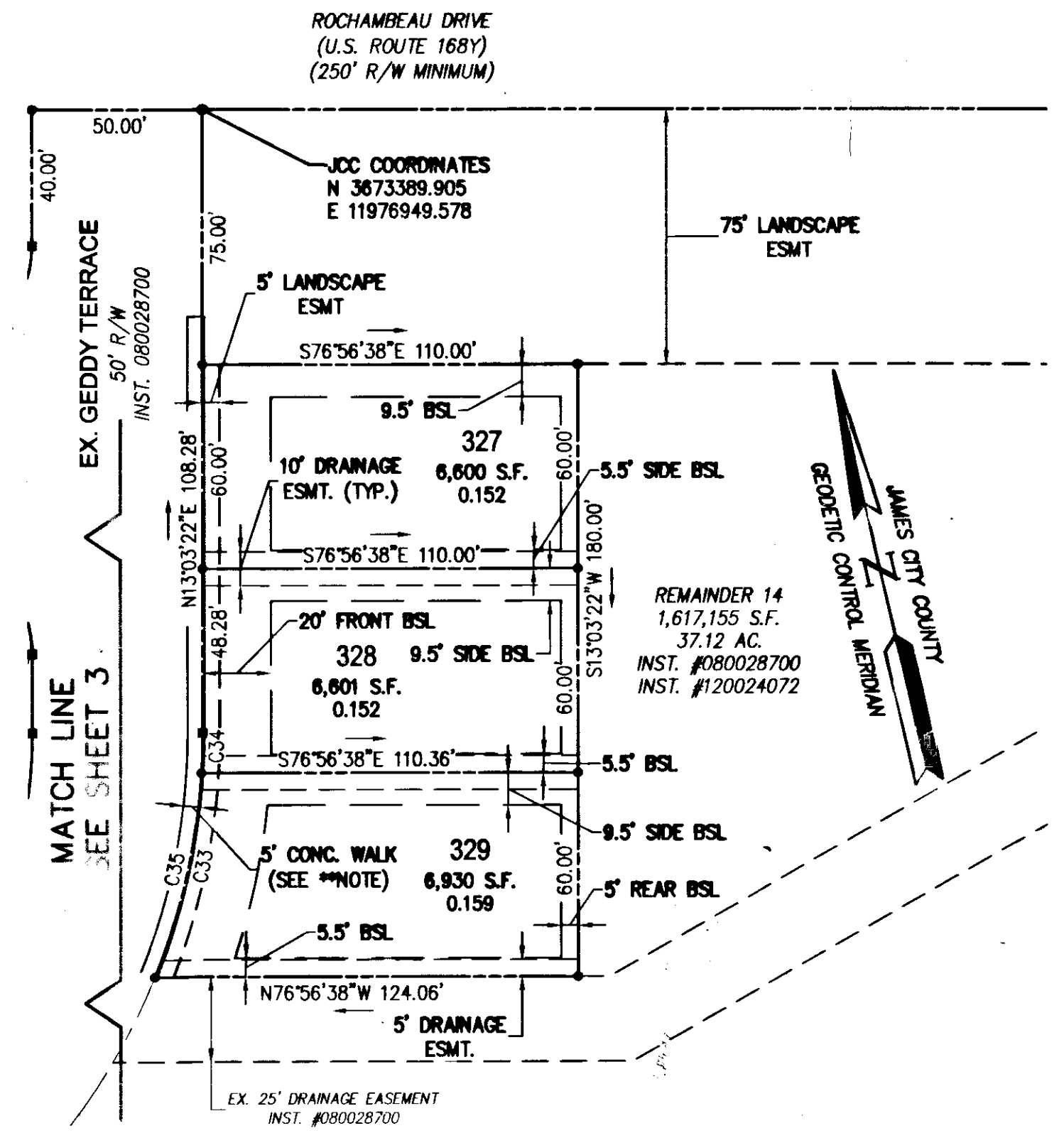


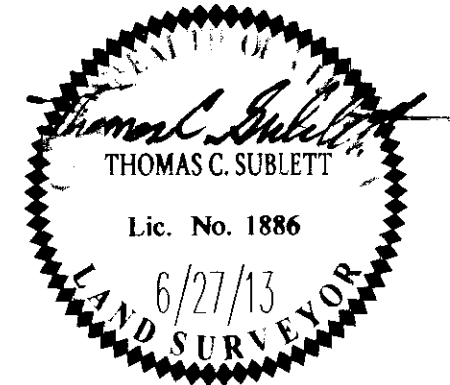
CURVE TABLE						
CURVE #	DELTA	RADIUS	LENGTH	TANGENT	CHORD	CHORD BEARING
C1	90°00'00"	35.00'	54.98'	35.00'	49.50'	S58°03'22"W
C2	40°03'04"	145.00'	101.36'	52.85'	99.31'	S83°01'50"W
C3	25°02'52"	145.00'	63.39'	32.21'	62.89'	S50°28'52"W
C4	4°54'03"	145.00'	12.40'	6.21'	12.40'	S35°30'24"W
C5	70°00'00"	145.00'	177.15'	101.53'	166.34'	S68°03'22"W
C6	0°31'23"	1475.00'	13.47'	6.73'	13.47'	S33°19'04"W
C7	2°35'00"	1475.00'	66.50'	33.26'	66.49'	S34°52'15"W
C8	0°12'48"	1475.00'	5.49'	2.75'	5.49'	S36°16'09"W
C9	3°19'11"	1475.00'	85.46'	42.74'	85.45'	S34°42'57"W
C10	89°02'41"	35.00'	54.39'	34.42'	49.08'	S80°53'53"W
C11	90°00'00"	35.00'	54.98'	35.00'	49.50'	S9°34'47"E
C12	0°49'48"	1475.00'	21.37'	10.69'	21.37'	N35°50'07"E
C13	0°07'31"	1475.00'	3.23'	1.61'	3.23'	N36°18'47"E
C14	0°57'19"	1475.00'	24.60'	12.30'	24.60'	N35°53'53"E
C15	0°15'49"	1525.00'	7.02'	3.51'	7.02'	N36°14'38"E
C16	1°52'43"	1525.00'	50.00'	25.00'	50.00'	N35°10'22"E
C17	1°10'39"	1525.00'	31.34'	15.67'	31.34'	N33°38'42"E
C18	3°19'11"	1525.00'	88.35'	44.19'	88.34'	N34°42'57"E
C19	33°37'15"	25.00'	14.67'	7.55'	14.46'	N49°52'00"E
C20	36°22'44"	25.00'	15.87'	8.21'	15.61'	N84°52'00"E
C21	70°00'00"	25.00'	30.54'	17.51'	28.68'	N68°03'22"E
C22	20°12'07"	25.00'	8.81'	4.45'	8.77'	N87°02'41"W
C23	56°21'37"	25.00'	24.59'	13.39'	23.61'	S54°40'26"W
C24	76°33'44"	25.00'	33.40'	19.73'	30.98'	S64°46'30"W
C25	13°26'15"	140.00'	32.83'	16.49'	32.76'	S19°46'30"W
C26	63°44'28"	35.00'	38.94'	21.76'	36.96'	S18°48'52"E
C27	26°14'33"	35.00'	16.03'	8.16'	15.89'	S63°48'23"E
C28	89°59'01"	35.00'	54.97'	34.99'	49.49'	S31°56'08"E
C29	24°11'09"	95.00'	40.10'	20.35'	39.80'	S89°02'12"E
C30	45°48'51"	95.00'	75.96'	40.14'	73.96'	N55°57'48"E
C31	70°00'00"	95.00'	116.06'	66.52'	108.98'	N68°03'22"E
C32	110°00'00"	25.00'	48.00'	35.70'	40.96'	N21°56'38"W
C33	18°38'27"	190.00'	61.82'	31.18'	61.54'	N25°54'52"E
C34	3°32'16"	190.00'	11.73'	5.87'	11.73'	N14°49'30"E
C35	22°10'44"	190.00'	73.55'	37.24'	73.09'	N24°08'44"E
C36	147°27'34"	35.00'	90.08'	119.92'	67.20'	N38°18'34"W
C37	0°57'19"	1525.00'	25.43'	12.72'	25.43'	S35°53'53"W

LINE TABLE		
LINE	BEARING	LENGTH
L1	S35°25'13"W	23.93'
L2	N54°34'47"W	35.00'
L3	S54°34'47"E	35.00'
L4	N54°34'47"W	35.03'
L5	N76°56'38"W	49.48'
L6	S13°03'22"W	20.00'
L7	S33°03'22"W	74.49'
L8	S54°34'47"E	50.00'
L9	S13°03'22"W	23.28'
L10	N33°03'22"E	14.84'
L11	S33°03'22"W	18.66'
L12	S34°42'57"W	9.30'



****NOTE:**
 IN THE AREAS WHERE THE 5' CONCRETE SIDEWALK IS NOT WITHIN THE RIGHT OF WAY THERE SHALL BE A 1' PEDESTRIAN ACCESS EASEMENT. THE SIDEWALKS ARE TO BE MAINTAINED BY THE WHITE HALL HOMEOWNER'S ASSOCIATION.

City of Williamsburg & County of James City Circuit Court: This PLAT was recorded on 27 December 2013 at 10:35 AM/PM, PB -- PG -- Document # 130028110 BETSY B. WOOLRIDGE, CLERK <i>[Signature]</i> Dep. Clerk			
1	6/27/13	REVISED PER COUNTY COMMENTS DATED 6-7-2013	JFS
Rev.	Date	Description	Revised By



Large **666'** Plat(s) Recorded
 herewith as # **130028110**

AES
 CONSULTING ENGINEERS

5248 Old Towne Road, Suite 1
 Williamsburg, Virginia 23188
 Phone: (757) 253-0040
 Fax: (757) 220-8994
 www.aesva.com

Hampton Roads | Central Virginia | Middle Peninsula

**PLAT OF SUBDIVISION OF
 REMAINDER 13 AND REMAINDER 14
 WHITE HALL
 SECTION 3**

OWNER: RAUCH DEVELOPMENT CO., L.L.C.
 JCC CASE NO. S-0005-2013

STONEHOUSE DISTRICT JAMES CITY COUNTY VIRGINIA

Project Contacts: TCS/JRK
 Project Number: 9048-19
 Scale: 1"=40' Date: 6/27/13
 Sheet Number
4 OF 4