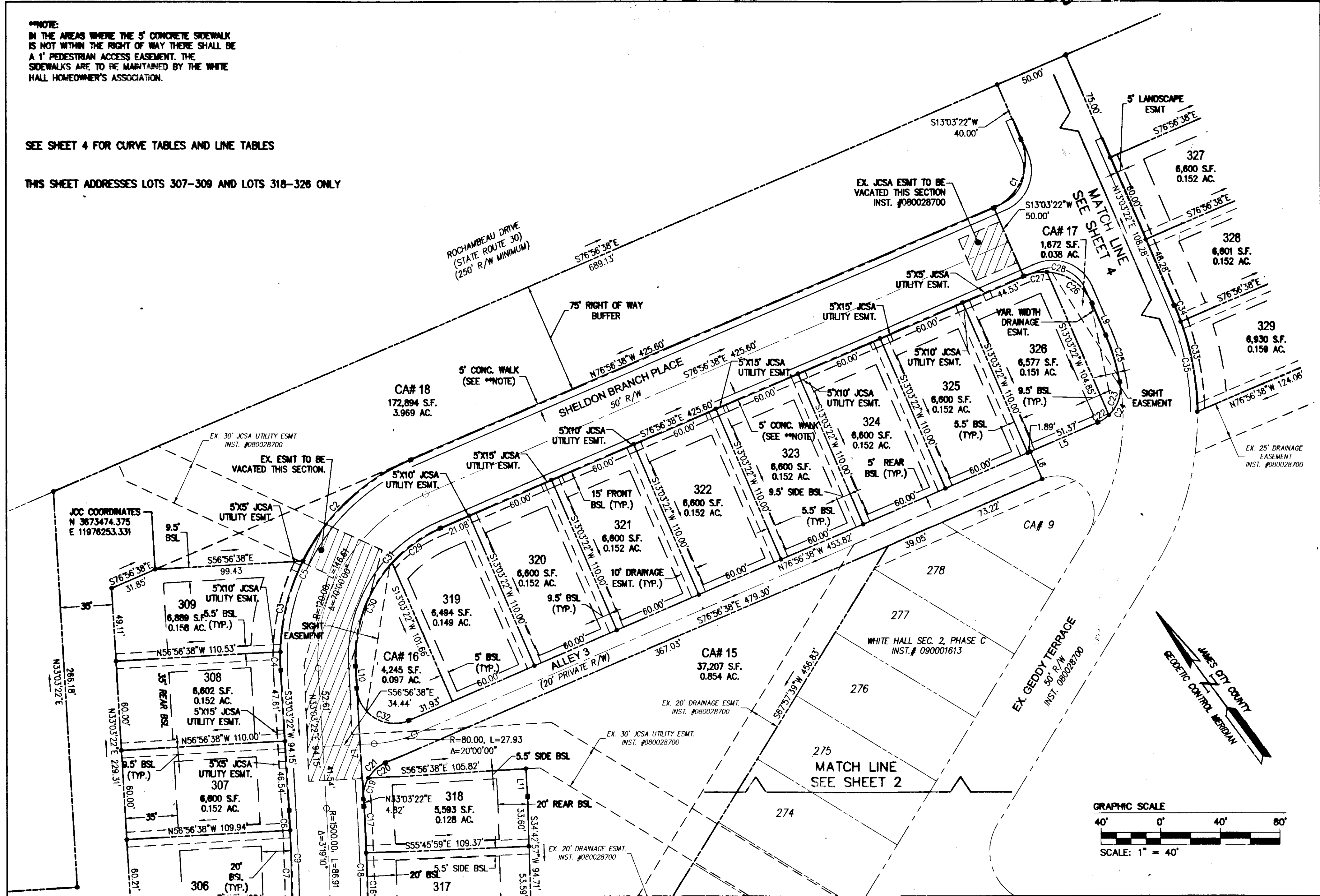


130028110

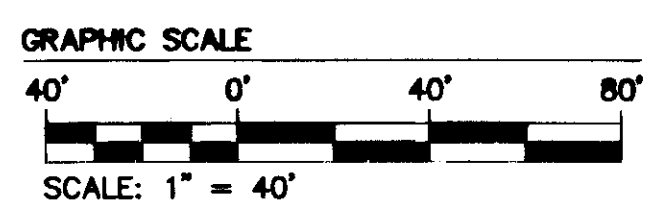
****NOTE:**
 IN THE AREAS WHERE THE 5' CONCRETE SIDEWALK IS NOT WITHIN THE RIGHT OF WAY THERE SHALL BE A 1' PEDESTRIAN ACCESS EASEMENT. THE SIDEWALKS ARE TO BE MAINTAINED BY THE WHITE HALL HOMEOWNER'S ASSOCIATION.

SEE SHEET 4 FOR CURVE TABLES AND LINE TABLES

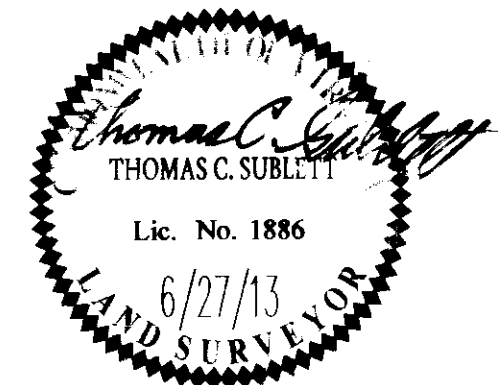
THIS SHEET ADDRESSES LOTS 307-309 AND LOTS 318-328 ONLY



JCC COORDINATES
 N 3873474.375
 E 11978253.331



City of Williamsburg & County of James City Circuit Court: This PLAT was recorded on 27 December 2013 at 10:35 AM/PM PG Document # 130028110 BETSY B. WOOLRIDGE, CLERK <i>[Signature]</i> Dep. Clerk			
1	8/27/13	REVISED PER COUNTY COMMENTS DATED 8-7-2013	JPS
Rev	Date	Description	Revised By



4 Large **MAP** Plats/Recorded
 herewith as # **130028110**

NES
 CONSULTING ENGINEERS
 Hampton Roads | Central Virginia | Middle Peninsula

5248 Old Towne Road, Suite 1
 Williamsburg, Virginia 23188
 Phone: (757) 253-0040
 Fax: (757) 220-8994
 www.aesva.com

**PLAT OF SUBDIVISION OF
 REMAINDER 13 AND REMAINDER 14
 WHITE HALL
 SECTION 3
 OWNER: RAUCH DEVELOPMENT CO., L.L.C.
 JCC CASE NO. S-0005-2013**

STONEHOUSE DISTRICT JAMES CITY COUNTY VIRGINIA

Project Contact:	TCS/JRK
Project Number:	9048-19
Scale:	1"=40'
Date:	6/27/13
Sheet Number	3 OF 4