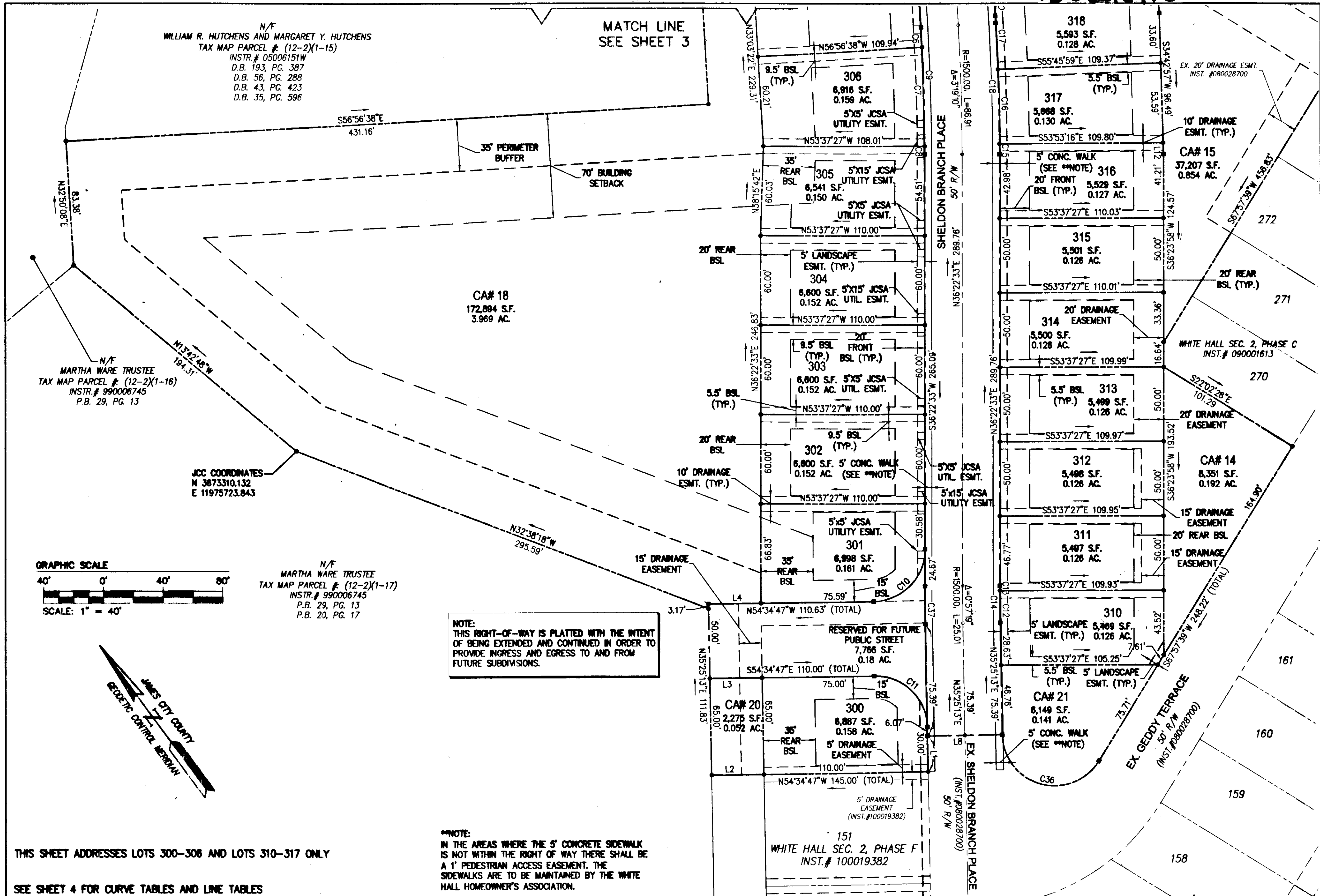


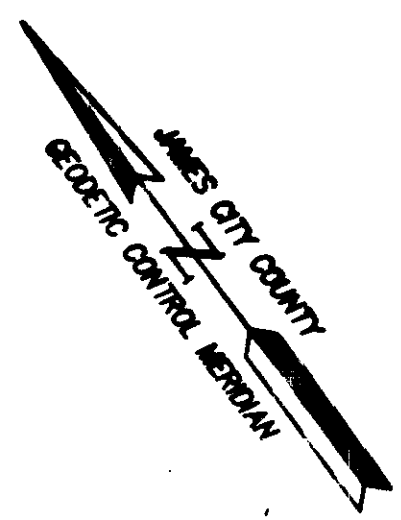
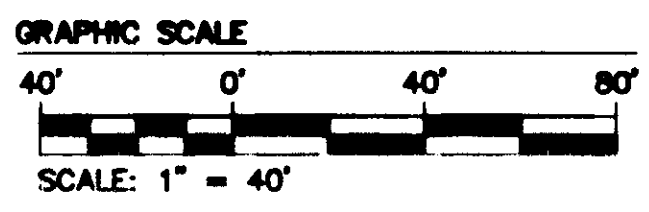
130028110



N/F
WILLIAM R. HUTCHENS AND MARGARET Y. HUTCHENS
TAX MAP PARCEL # (12-2)(1-15)
INSTR. # 05006151W
D.B. 193, PG. 387
D.B. 56, PG. 288
D.B. 43, PG. 423
D.B. 35, PG. 596

N/F
MARTHA WARE TRUSTEE
TAX MAP PARCEL # (12-2)(1-16)
INSTR. # 990006745
P.B. 29, PG. 13

N/F
MARTHA WARE TRUSTEE
TAX MAP PARCEL # (12-2)(1-17)
INSTR. # 990006745
P.B. 29, PG. 13
P.B. 20, PG. 17



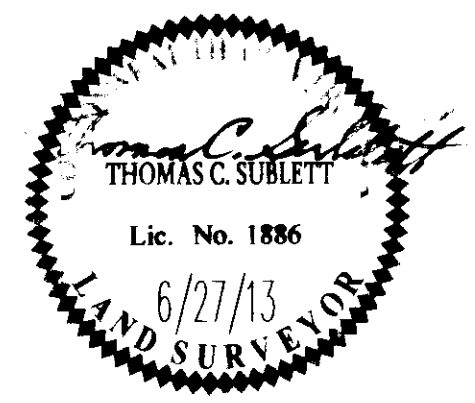
JCC COORDINATES
N 3673310.132
E 11975723.843

NOTE:
THIS RIGHT-OF-WAY IS PLATTED WITH THE INTENT OF BEING EXTENDED AND CONTINUED IN ORDER TO PROVIDE INGRESS AND EGRESS TO AND FROM FUTURE SUBDIVISIONS.

**NOTE:
IN THE AREAS WHERE THE 5' CONCRETE SIDEWALK IS NOT WITHIN THE RIGHT OF WAY THERE SHALL BE A 1' PEDESTRIAN ACCESS EASEMENT. THE SIDEWALKS ARE TO BE MAINTAINED BY THE WHITE HALL HOMEOWNER'S ASSOCIATION.

THIS SHEET ADDRESSES LOTS 300-306 AND LOTS 310-317 ONLY
SEE SHEET 4 FOR CURVE TABLES AND LINE TABLES

City of Williamsburg & County of James City Circuit Court: This PLAT was recorded on 27 December 2013 at 10:35 AM/PM, PG. 1 Document # 130028110 BETSY B. WOOLRIDGE, CLERK Dep. Clerk			
1	8/27/13	REVISED PER COUNTY ORDINANCE ENVED 6-7-2010	JFB
Rev.	Date	Description	Revised By



Large Plat(s) Recorded
herewith as # 130028110

AES
CONSULTING ENGINEERS
Hampton Roads | Central Virginia | Middle Peninsula

5248 Old Towne Road, Suite 1
Williamsburg, Virginia 23186
Phone: (757) 253-0040
Fax: (757) 220-8994
www.aesva.com

PLAT OF SUBDIVISION OF
REMAINDER 13 AND REMAINDER 14
WHITE HALL
SECTION 3
OWNER: RAUCH DEVELOPMENT CO., L.L.C.
JCC CASE NO. S-0005-2013

STONEHOUSE DISTRICT | JAMES CITY COUNTY | VIRGINIA

Project Contacts:	TCS/JMK
Project Number:	9048-19
Scale:	1"=40'
Date:	8/27/13
Sheet Number	2 OF 4