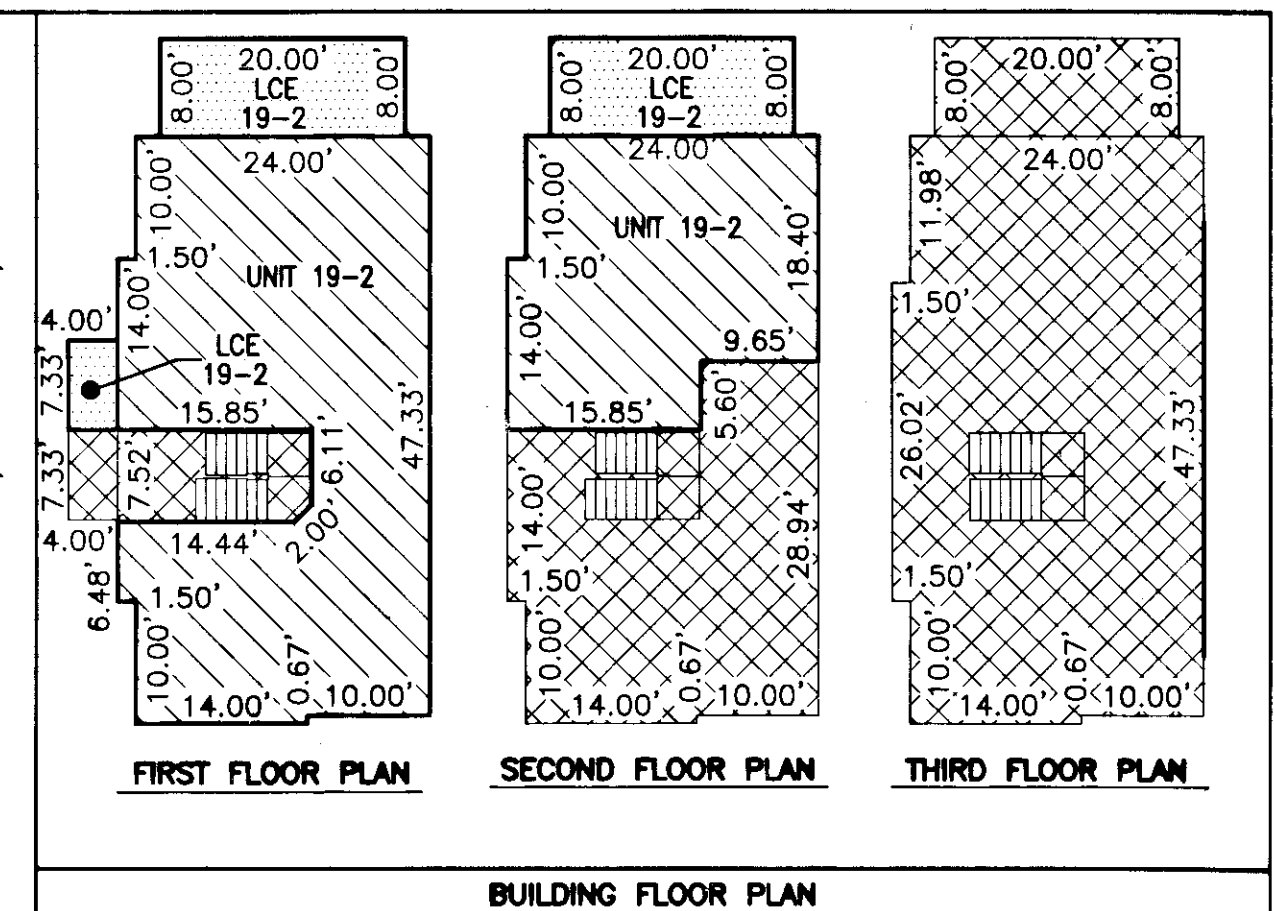
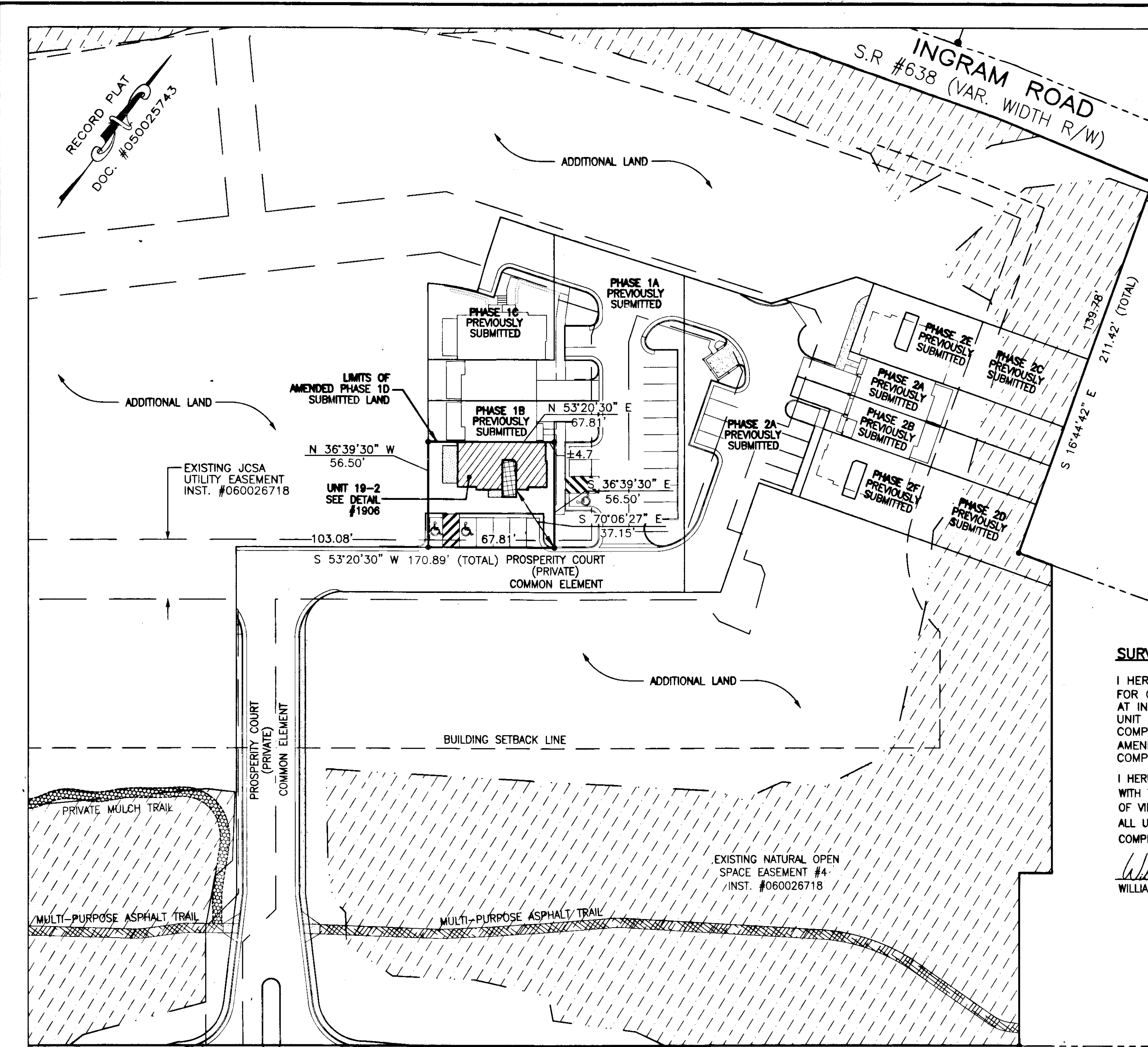


130027380



- INDICATES ADDITIONAL LAND WITHIN PHASE 1D BOUNDARIES
- INDICATES LIMITED COMMON ELEMENT
- INDICATES UNIT AREA
- INDICATES COMMON ELEMENT

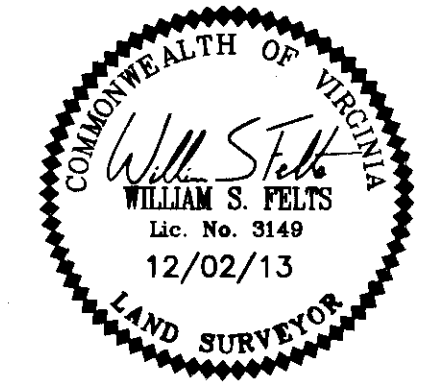
**SURVEYORS CERTIFICATE**

I HEREBY CERTIFY THAT THE PLAN PREVIOUSLY RECORDED FOR GOVERNOR'S GROVE AT FIVE FORKS, A CONDOMINIUM AT INSTRUMENT 090022560 ACCURATELY DEPICTS THE UNIT AND RELATED IMPROVEMENTS SHOWN AND THAT THEY COMPLY WITH THE CODE OF VIRGINIA OF 1950, AS AMENDED 55-79.58(B) AND ARE SUBSTANTIALLY COMPLETE.

I HEREBY CERTIFY THAT THIS PLAT IS ACCURATE AND COMPLIES WITH THE PROVISIONS OF SECTION 55-79.58 (A) OF THE CODE OF VIRGINIA 1950 AS AMENDED AND I FURTHER CERTIFY THAT ALL UNITS DEPICTED HEREON HAVE BEEN SUBSTANTIALLY COMPLETE.

*William S. Felts*  
WILLIAM S. FELTS LIC. #3149

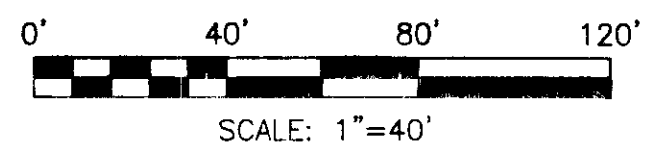
12/02/13  
DATE



AMENDED PLAT OF  
PHASE 1D  
GOVERNOR'S GROVE AT FIVE FORKS  
A CONDOMINIUM  
LOCATED IN THE BERKELEY DISTRICT  
JAMES CITY COUNTY, VIRGINIA

DATE: 12/02/13 SCALE: 1" = 40' JOB# 06-460  
SHEET 2 OF 2

JOHN TYLER HIGHWAY  
STATE ROUTE #5  
(VARIABLE WIDTH PUBLIC R/W)



UNIT NUMBER	UNIT TYPE	STREET ADDRESS	PARCEL ID#
19-2	C	#1906 PROSPERITY CT	4622001906

City of Williamsburg & County of James City  
Circuit Court: This PLAT was recorded on  
12 December 2013  
at 2:18 PM, PG. 1  
Document # 130027380  
BETSY B. WOOLRIDGE, CLERK  
*Betsy Woolridge* Dep. Clerk

**LandTech Resources, Inc.**  
Surveying • Engineering • GPS  
3925 Midlands Road, Williamsburg, VA 23188  
Phone: (757) 565-1677 Fax: (757) 565-0782  
web: landtechresources.com