

130026614

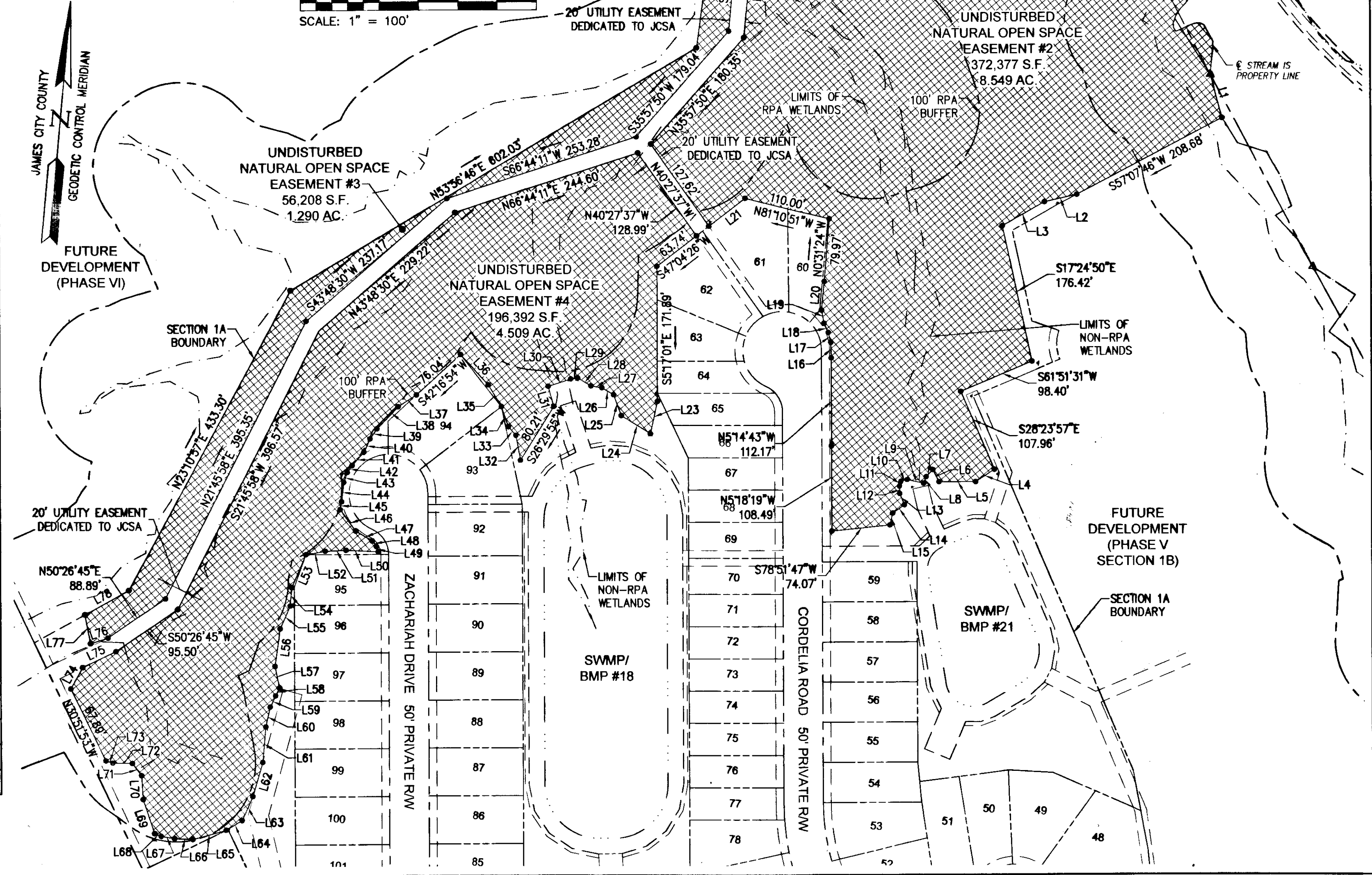
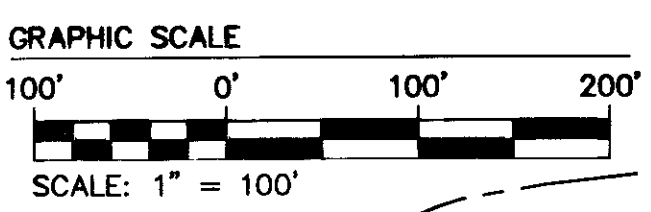
LINE TABLE			LINE TABLE		
LINE	BEARING	LENGTH	LINE	BEARING	LENGTH
L1	S20°05'58"E	56.86'	L43	S13°38'58"W	13.23'
L2	S71°56'29"W	42.36'	L44	S1°41'12"W	24.99'
L3	S55°19'42"W	61.54'	L45	S51°7'46"W	10.02'
L4	S52°04'26"W	28.59'	L46	S40°49'26"E	33.73'
L5	S84°33'56"W	46.37'	L47	S84°07'51"E	24.53'
L6	N32°27'27"W	17.52'	L48	S41°39'09"E	8.85'
L7	S37°38'31"W	12.13'	L49	S24°34'24"E	7.07'
L8	S16°45'28"W	9.00'	L50	N87°25'56"E	41.02'
L9	N83°09'29"W	21.26'	L51	S82°23'10"W	26.33'
L10	S70°31'06"W	8.18'	L52	S74°39'00"W	24.84'
L11	S11°27'39"W	6.19'	L53	S18°25'23"W	45.44'
L12	S7°21'58"E	9.57'	L54	S0°17'06"E	23.41'
L13	S27°01'28"E	15.46'	L55	S18°32'33"W	31.67'
L14	S49°36'18"W	18.22'	L56	S2°40'14"W	48.29'
L15	S7°47'12"W	15.52'	L57	S16°36'25"E	28.18'
L16	N6°52'45"W	19.56'	L58	S21°21'47"W	11.08'
L17	N19°02'08"W	13.06'	L59	S20°36'56"W	15.86'
L18	N29°59'56"W	12.78'	L60	S7°26'54"W	25.84'
L19	N15°29'59"W	17.21'	L61	S0°16'19"E	45.33'
L20	N0°11'56"E	36.57'	L62	S11°18'33"W	45.09'
L21	S47°04'26"W	58.30'	L63	S18°41'00"W	33.50'
L22	N24°18'51"E	134.74'	L64	S53°27'36"W	23.69'
L23	S6°59'34"W	42.12'	L65	S89°51'34"W	43.93'
L24	N63°26'56"W	43.50'	L66	S87°25'40"W	23.15'
L25	N25°17'44"W	28.32'	L67	N84°48'30"W	17.22'
L26	N64°16'48"W	17.19'	L68	N71°35'03"W	9.04'
L27	N85°09'54"W	14.05'	L69	N23°56'37"W	45.46'
L28	N64°22'21"W	19.73'	L70	N8°49'27"W	30.48'
L29	S75°59'01"W	8.81'	L71	N42°40'20"W	19.25'
L30	S66°52'35"W	30.19'	L72	S85°49'54"W	25.01'
L31	S20°23'35"E	26.56'	L73	N78°41'36"W	9.27'
L32	N15°53'11"W	32.02'	L74	N23°41'54"E	30.95'
L33	N45°45'17"W	14.45'	L75	N59°01'54"E	46.95'
L34	N24°18'55"W	27.11'	L76	S66°36'39"W	23.35'
L35	N36°12'23"W	32.32'	L77	N16°08'13"W	37.32'
L36	N47°38'34"W	52.45'	L78	N55°56'23"E	63.98'
L37	S52°02'36"W	27.61'	L79	S24°18'51"W	141.96'
L38	S38°43'18"W	39.08'	L80	S24°18'51"W	39.28'
L39	S28°58'53"W	15.19'	L81	S24°18'51"W	16.55'
L40	S20°02'53"W	18.77'	L82	N24°18'51"E	20.81'
L41	S36°24'56"W	22.59'	L83	N24°18'51"E	39.38'
L42	S30°01'24"W	10.69'			

CURVE TABLE						
CURVE #	DELTA	RADIUS	LENGTH	TANGENT	CHORD	CHORD BEARING
C79	0°34'35"	1109.76'	11.16'	5.58'	11.16'	N54°06'28"W
C80	0°37'24"	897.84'	9.77'	4.88'	9.77'	N87°34'10"W

NATURAL OPEN SPACE EASEMENT AREA

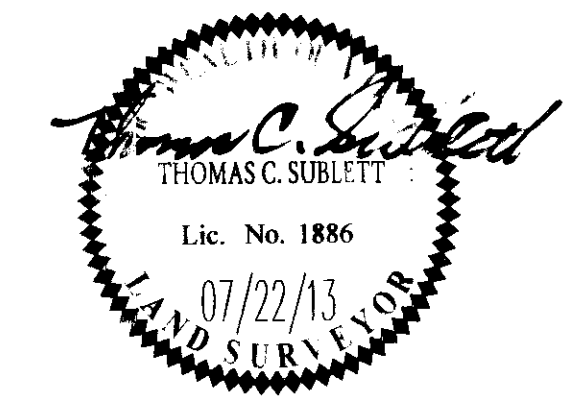
NATURAL OPEN SPACE EASEMENT #2	372,377 SQ. FT.	8.549 AC.
NATURAL OPEN SPACE EASEMENT #3	56,208 SQ. FT.	1.290 AC.
NATURAL OPEN SPACE EASEMENT #4	196,392 SQ. FT.	4.509 AC.
TOTAL	624,977 SQ. FT.	14.35 AC.

LEGEND:
 UNDISTURBED NATURAL OPEN SPACE AND CONSERVATION EASEMENT HEREBY DEDICATED TO JAMES CITY COUNTY



Rev	Date	Description	Revised By

City of Williamsburg & County of James City
 Circuit Court: This PLAT was recorded on
3 December 2013
 at 9:42 AM/PM, PG.
 Document # **130026614**
 BETSY B. WOOLRIDGE, CLERK
[Signature], Dep. Clerk



8 Large Small Plat(s) Recorded
 herewith as # **130026614**

AES
 CONSULTING ENGINEERS
 Hampton Roads | Central Virginia | Middle Peninsula
 614 Moorefield Park Drive
 Richmond, Virginia 23236-3655
 Phone: (804) 330-8040
 Fax: (804) 330-9840
 www.aesva.com

PLAT OF SUBDIVISION
 UNDISTURBED NATURAL OPEN SPACE EASEMENT
COLONIAL HERITAGE
 PHASE V - SECTION 1A
 OWNER / DEVELOPER: COLONIAL HERITAGE, L.L.C.
 STONEHOUSE DISTRICT JAMES CITY COUNTY VIRGINIA

Project Contacts: TRS/TCS
 Project Number: 8881-51-A
 Scale: 1"=100' Date: 07/22/13
 Sheet Number
7 OF 8