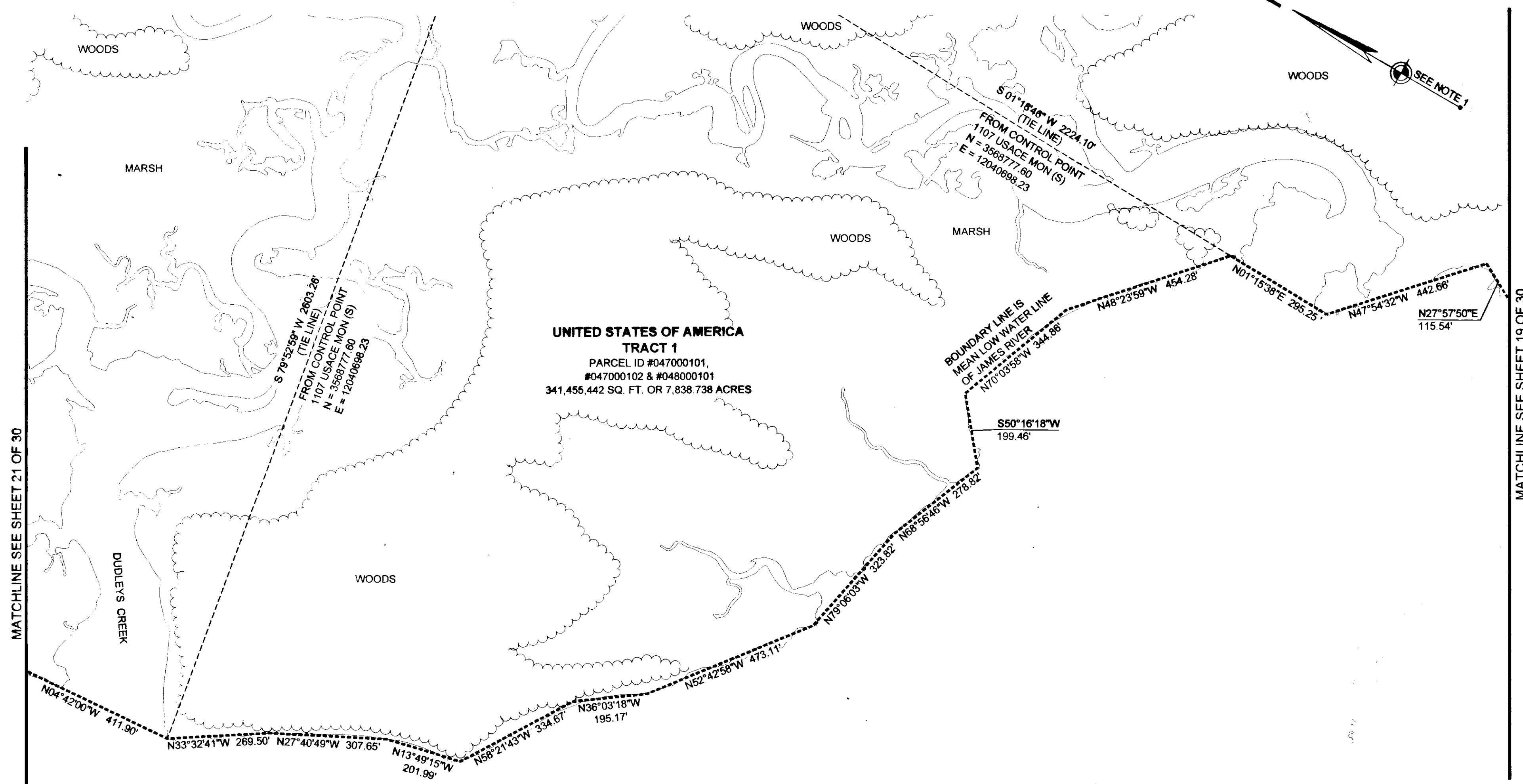
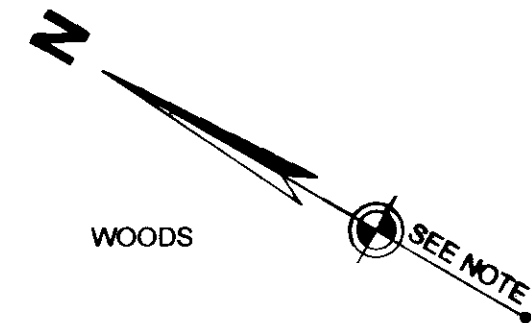


130026366

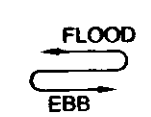


MATCHLINE SEE SHEET 21 OF 30

MATCHLINE SEE SHEET 19 OF 30

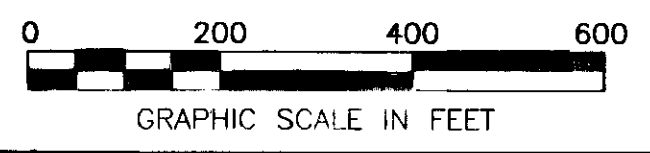
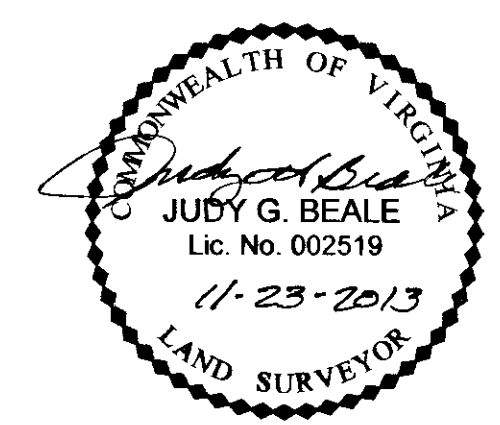
**UNITED STATES OF AMERICA
TRACT 1**
PARCEL ID #047000101,
#047000102 & #048000101
341,455,442 SQ. FT. OR 7,838.738 ACRES

JAMES RIVER



LEGEND

- IRON PIN FOUND
- ◐ IRON PIPE FOUND
- ◑ T-BAR FOUND
- NAIL FOUND
- CONCRETE MONUMENT FOUND
- MONUMENT SET
- IRON PIN SET
- BOUNDARY LINE
- - - TIE LINE
- · - · - CITY/COUNTY LINE
- · — · — RIGHT OF WAY LINE
- - - EASEMENT LINE
- · - · - ADJOINER LINE
- ==== EXIST. RAILROAD TRACKS
- ~~~~~ EDGE OF WOODS



30 Large Sheet Plat(s) Recorded
herewith as 130026366

VIRGINIA:
IN THE CLERK'S OFFICE OF THE CIRCUIT COURT OF THE CITY/COUNTY OF **WILLIAMSBURG/JAMES CITY COUNTY**
VIRGINIA ON THIS 25TH DAY OF November, 2013, THIS PLAT WAS RECEIVED AND ADMITTED TO
RECORD IN MAP BOOK _____ AT PAGE _____ AT 10:09 AM as Inst 130026366
TESTE: DEBY & WOOLRIDGE, CLERK by: Patrick Maraluso, deputy clerk
CLERK

SEE SHEET 1 OF 30 FOR NOTES

BOUNDARY SURVEY
OF PROPERTY OF
UNITED STATES OF AMERICA
JOINT BASE LANGLEY-EUSTIS (JBLE)
NEWPORT NEWS TAX PARCELS 047000100, 047000102 & 048000101
AND
JAMES CITY COUNTY TAX PARCEL 0622010001
NEWPORT NEWS AND JAMES CITY COUNTY, VIRGINIA

WOOLPERT
DESIGN | GEOGRAPHICAL | INFRASTRUCTURE

676 INDEPENDENCE PARKWAY
SUITE 100
CHESAPEAKE, VA 23320-5218
TEL: 757.549.3549
FAX: 757.549.3540

DES. N/A JOB NO. 71874
DRN. PP SCALE 1" = 200'
CKD. JGB DATE 4/29/2013

SHEET NO. 20 OF 30
FILE NO. 71874_plat.dwg