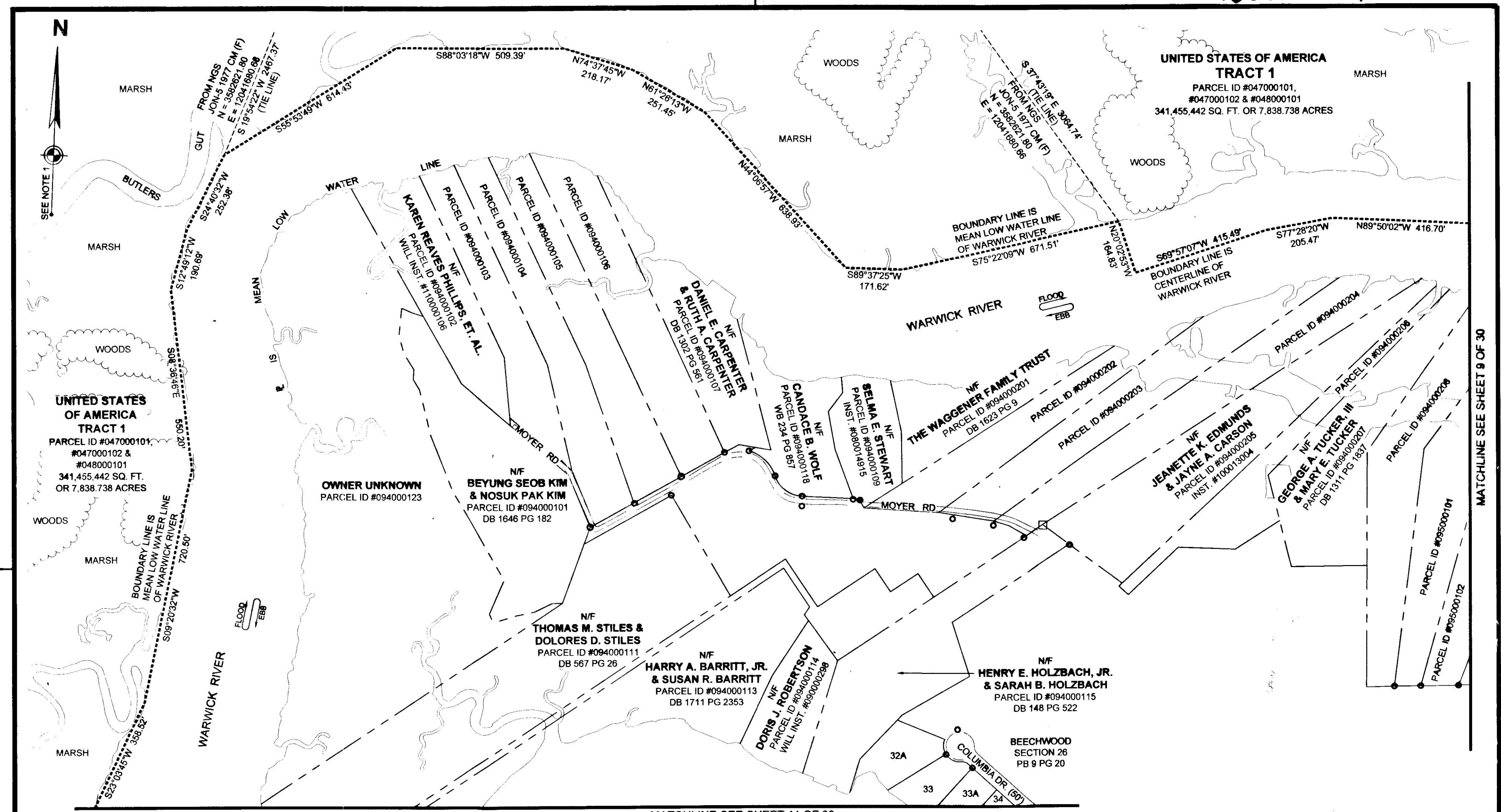


130026366



SEE NOTE 1

UNITED STATES OF AMERICA TRACT 1
 PARCEL ID #047000101, #047000102 & #048000101
 341,455.442 SQ. FT. OR 7,838.738 ACRES

UNITED STATES OF AMERICA TRACT 1
 PARCEL ID #047000101, #047000102 & #048000101
 341,455.442 SQ. FT. OR 7,838.738 ACRES

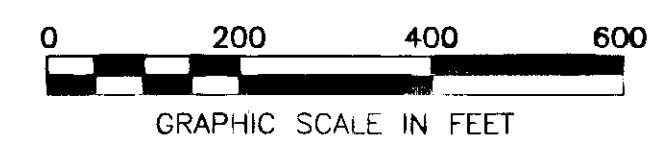
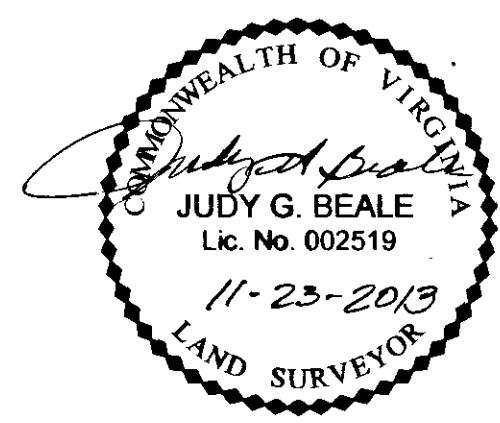
MATCHLINE SEE SHEET 9 OF 30

MATCHLINE SEE SHEET 11 OF 30

30 Large 3x4 1/2 Plat(s) Recorded
 hereon as 130026366

VIRGINIA: IN THE CLERK'S OFFICE OF THE CIRCUIT COURT OF THE CITY/COUNTY OF WILLIAMSBURG/JAMES CITY COUNTY VIRGINIA ON THIS 25th DAY OF November 2013, THIS PLAT WAS RECEIVED AND ADMITTED TO RECORD IN MAP BOOK AT PAGE AT 10:08 AM on Inst 130026366
 TESTE: **STEVE S. WOOLPERT, CLERK** by: *Patrick Wardlaw, Deputy Clerk*
 CLERK

- LEGEND**
- IRON PIN FOUND
 - ◐ IRON PIPE FOUND
 - ⊕ T-BAR FOUND
 - NAIL FOUND
 - ◻ CONCRETE MONUMENT FOUND
 - MONUMENT SET
 - IRON PIN SET
- BOUNDARY LINE
 - TIE LINE
 - CITY/COUNTY LINE
 - RIGHT OF WAY LINE
 - EASEMENT LINE
 - ADJOINER LINE
 - EXIST. RAILROAD TRACKS
 - EDGE OF WOODS



SEE SHEET 1 OF 30 FOR NOTES

BOUNDARY SURVEY
 OF PROPERTY OF
UNITED STATES OF AMERICA
JOINT BASE LANGLEY-EUSTIS (JBLE)
 NEWPORT NEWS TAX PARCELS 047000100, 047000102 & 048000101
 AND
 JAMES CITY COUNTY TAX PARCEL 0622010001
 NEWPORT NEWS AND JAMES CITY COUNTY, VIRGINIA

WOOLPERT
 DESIGN | GEOGRAPHICAL | INFRASTRUCTURE

676 INDEPENDENCE PARKWAY
 SUITE 100
 CHESAPEAKE, VA 23320-5218
 TEL: 757.549.3549
 FAX: 757.549.3540

DES. N/A JOB NO. 71874
 DRN. PP SCALE 1" = 200'
 CKD. JGB DATE 4/29/2013
 SHEET NO. 10 OF 30
 FILE NO. 71874_plat.dwg