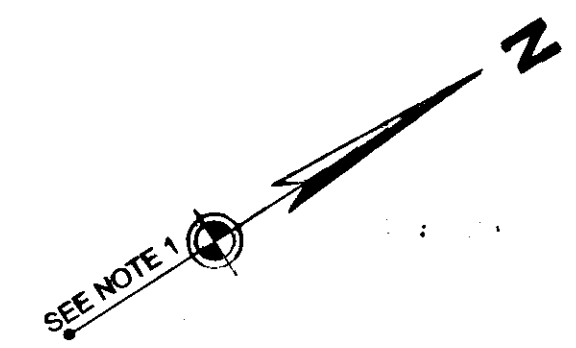
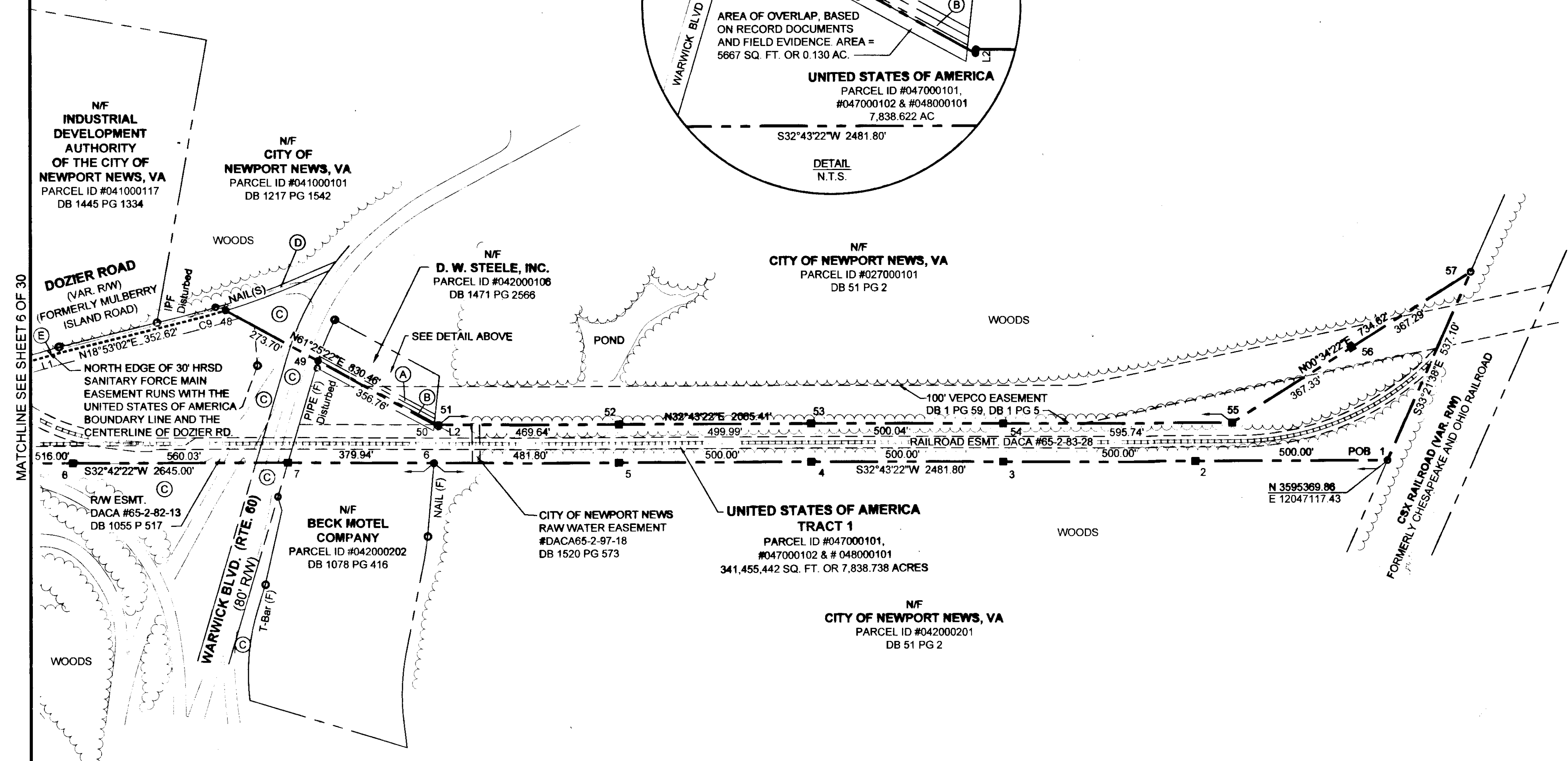
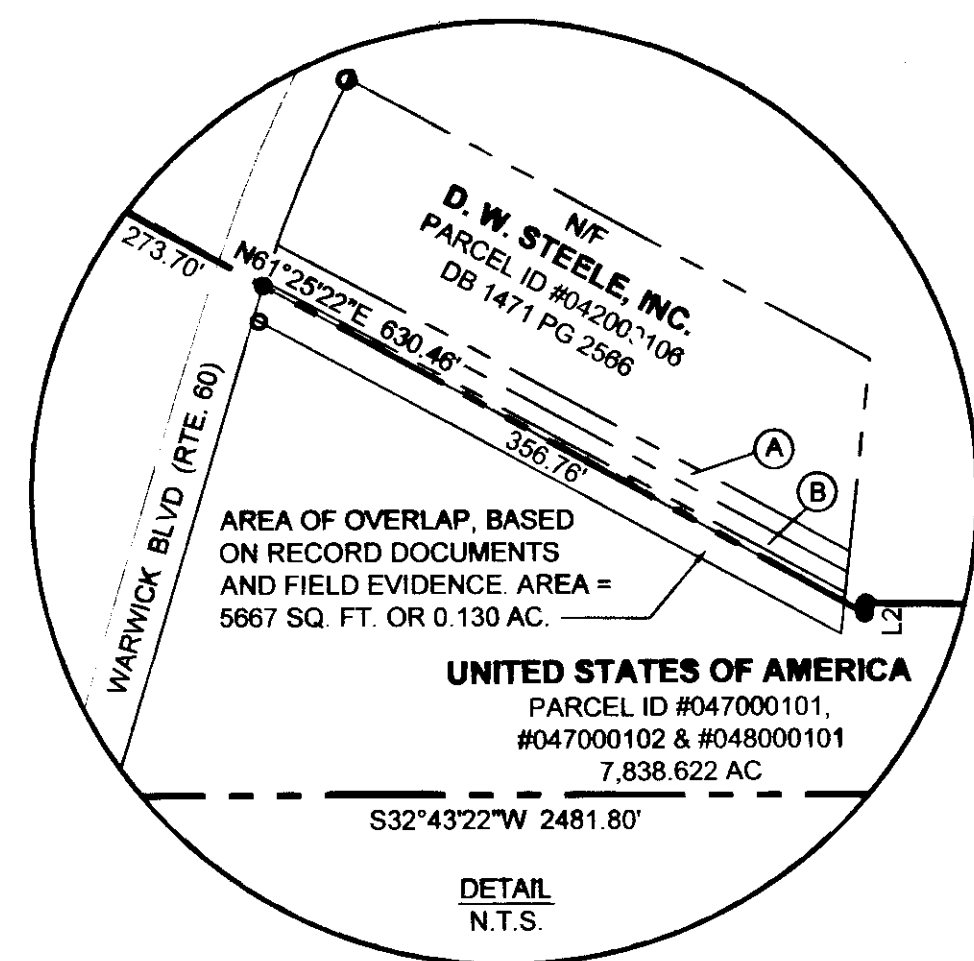


130026366



CURVE TABLE					
CURVE	RADIUS	ARC	DELTA	CHORD BEARING	CHORD LENGTH
C9	1741.50'	91.29'	03°00'12"	N17°22'56"E	91.27'

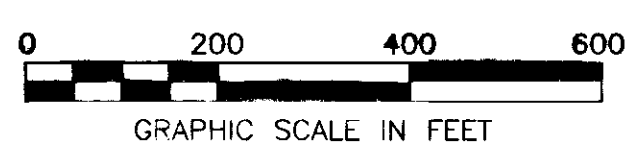
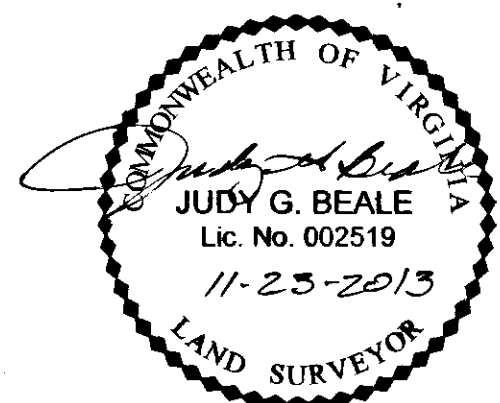
LINE TABLE		
LINE	BEARING	DISTANCE
L1	N17°02'42"E	177.01'
L2	N51°28'38"W	5.10'



MATCHLINE SEE SHEET 6 OF 30

SEE SHEET 1 OF 30 FOR NOTES

- LEGEND**
- IRON PIN FOUND
 - IRON PIPE FOUND
 - T-BAR FOUND
 - NAIL FOUND
 - CONCRETE MONUMENT FOUND
 - MONUMENT SET
 - IRON PIN SET
- BOUNDARY LINE
 - - - TIE LINE
 - CITY/COUNTY LINE
 - RIGHT OF WAY LINE
 - EASEMENT LINE
 - ADJOINER LINE
 - EXIST. RAILROAD TRACKS
 - EDGE OF WOODS



BOUNDARY SURVEY
OF PROPERTY OF
UNITED STATES OF AMERICA
JOINT BASE LANGLEY-EUSTIS (JBLE)
NEWPORT NEWS TAX PARCELS 047000100, 047000102 & 048000101
AND
JAMES CITY COUNTY TAX PARCEL 0622010001
NEWPORT NEWS AND JAMES CITY COUNTY, VIRGINIA

DES. N/A JOB NO. 71874
DRN. PP SCALE 1" = 200'
CKD. JGB DATE 4/29/2013

WOLPERT
DESIGN | CONSULTING | INFRASTRUCTURE
676 INDEPENDENCE PARKWAY
SUITE 100
CHESAPEAKE, VA 23320-5218
TEL: 757.549.3549
FAX: 757.549.3540

SHEET NO. 5 OF 30
FILE NO. 71874_plat.dwg

VIRGINIA:
IN THE CLERK'S OFFICE OF THE CIRCUIT COURT OF THE CITY/COUNTY OF WILLIAMSBURG/JAMES CITY COUNTY
VIRGINIA ON THIS 25TH DAY OF November, 2013, THIS PLAT WAS RECEIVED AND ADMITTED TO
RECORD IN MAP BOOK _____ AT PAGE _____ AT 10:09 AM AS INSTRUMENT 130026366
TESTE: DESY B. WOOLPERT, CLERK by: Patrick H. Hines, Deputy Clerk
CLERK

30 Large (Small Plats) Recorded
herewith as # 130026366