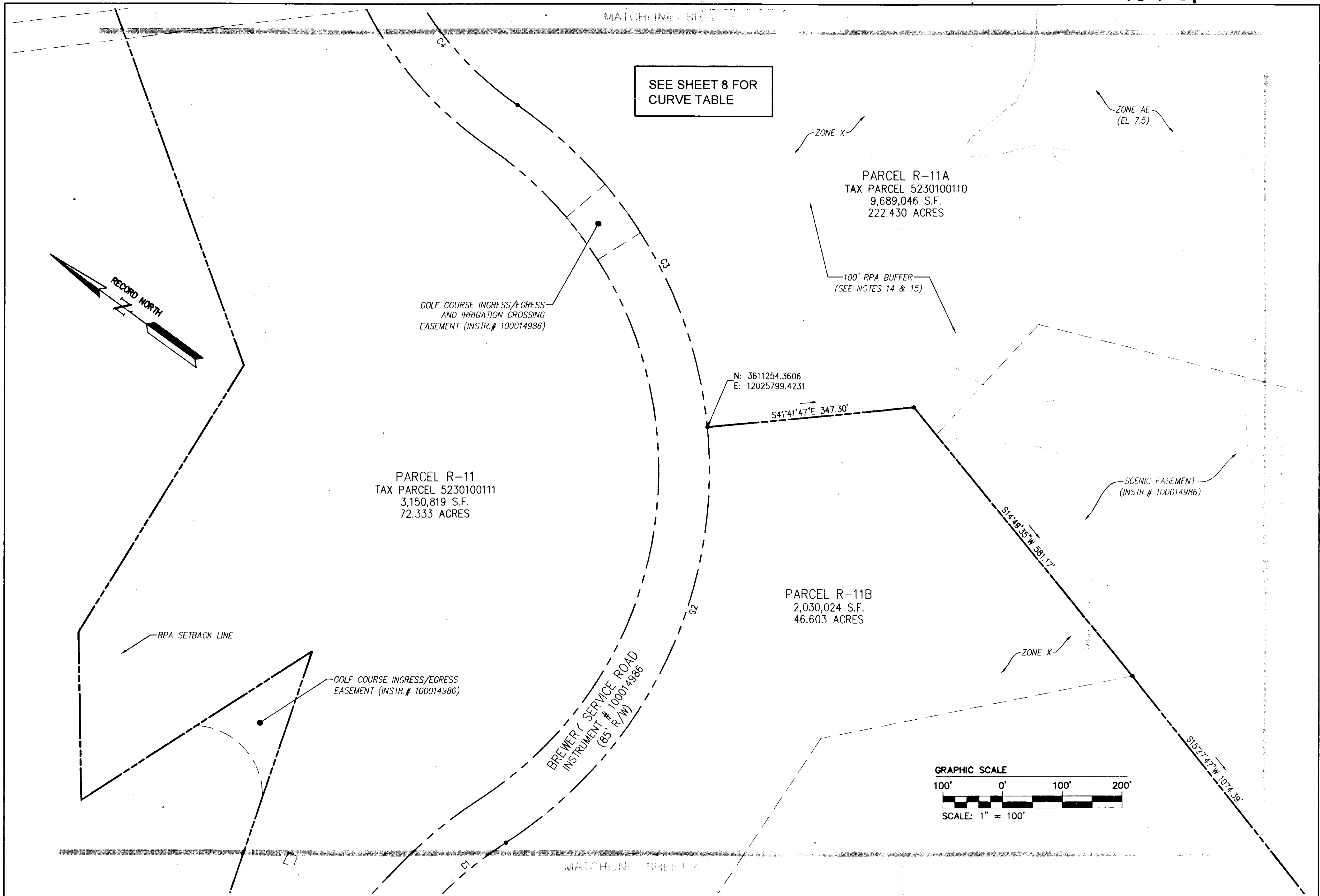


130023432



2	9/3/13	REVISED AS PER COMMENT LETTERS	JCA
1	7/11/13	REVISED AS PER COMMENT LETTERS	JCA

City of Williamsburg & County of James City
Circuit Court: This PLAT was recorded on
15 October, 2013
at 12:15 PM, PG —
Document # 130023432
BETSY B. WOOLRIDGE, CLERK
Frank W. ..., Dep. Clerk



8 Large Plat(s) Recorded
herewith as # **130023432**

AES
CONSULTING ENGINEERS

1317 Executive Blvd, Suite 150
Chesapeake, Virginia 23320
Phone: (757) 410-7436
www.aesva.com

Hampton Roads | Central Virginia | Middle Peninsula

COMPOSITE PLAT OF SUBDIVISION
PARCEL R-11
KINGSMILL RESORT
PROPERTY OF
XANTERRA KINGSMILL, LLC

ROBERTS DISTRICT COUNTY OF JAMES CITY VIRGINIA

Project Contacts		RDM
Project Number		775340
Scale	Date	
1"=100'	01/29/13	
Sheet Number		
4		