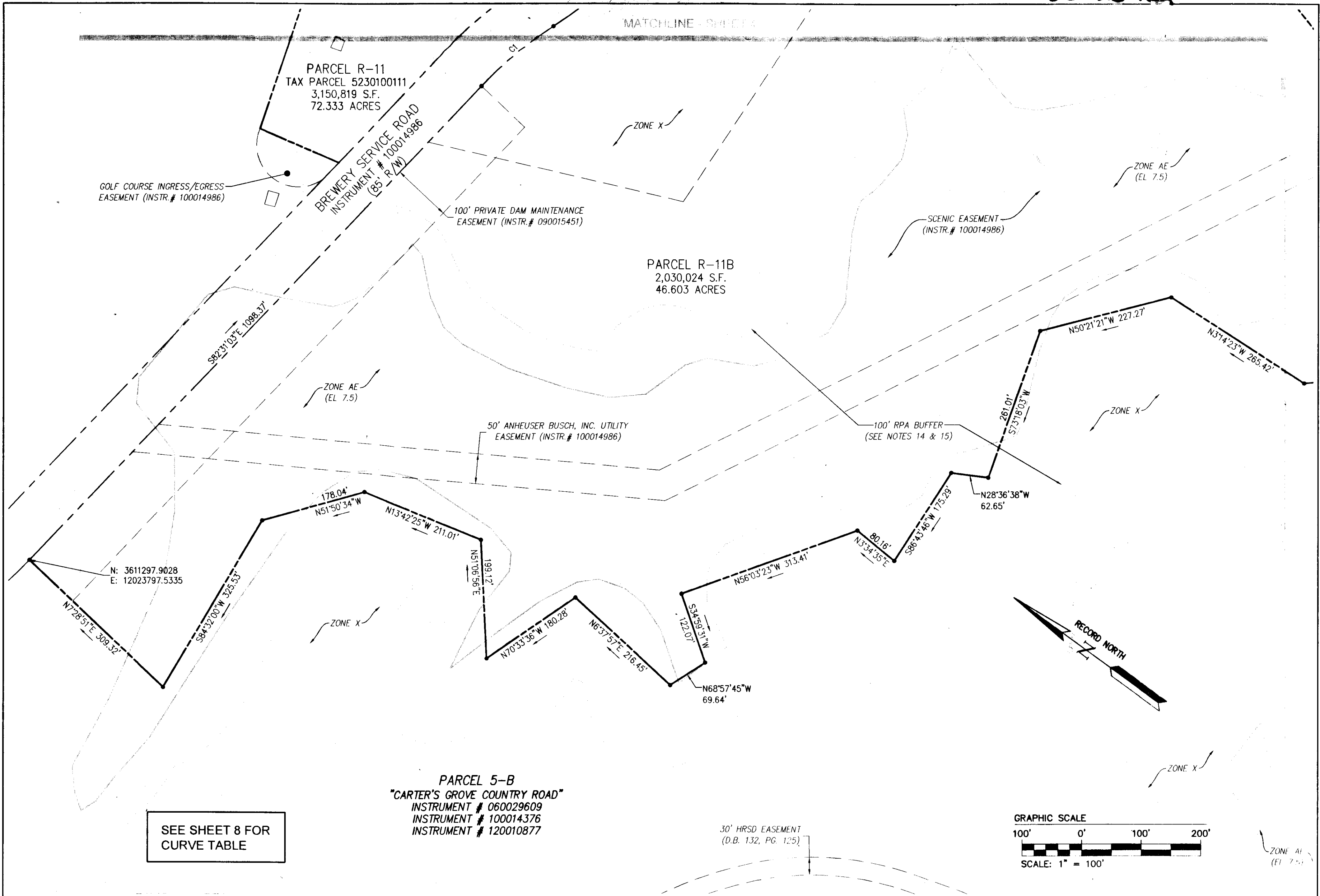


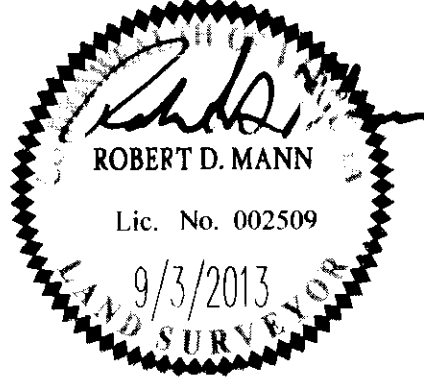
130023432



SEE SHEET 8 FOR CURVE TABLE

City of Williamsburg & County of James City  
Circuit Court. This PLAT was recorded on  
15 October, 2013  
at 12:15 M/PM, PB - PG -  
Document # 130023432  
BETSY B. WOOLRIDGE, CLERK  
[Signature], Dep. Clerk

Rev	Date	Description	Revised by
2	9/3/13	REVISED AS PER COMMENT LETTERS	JCA
1	7/11/13	REVISED AS PER COMMENT LETTERS	JCA



3 Large Plat(s) Recorded  
herewith as # 130023432

**AES**  
CONSULTING ENGINEERS  
Hampton Roads | Central Virginia | Middle Peninsula

1317 Executive Blvd, Suite 150  
Chesapeake, Virginia 23320  
Phone: (757) 410-7436  
www.aesva.com

COMPOSITE PLAT OF SUBDIVISION  
PARCEL R-11  
KINGSMILL RESORT  
PROPERTY OF  
**XANTERRA KINGSMILL, LLC**  
ROBERTS DISTRICT    COUNTY OF JAMES CITY    VIRGINIA

Project Contacts	RDM
Project Number	775340
Scale	Date
1"=100'	01/29/13
Sheet Number	
<b>2</b>	