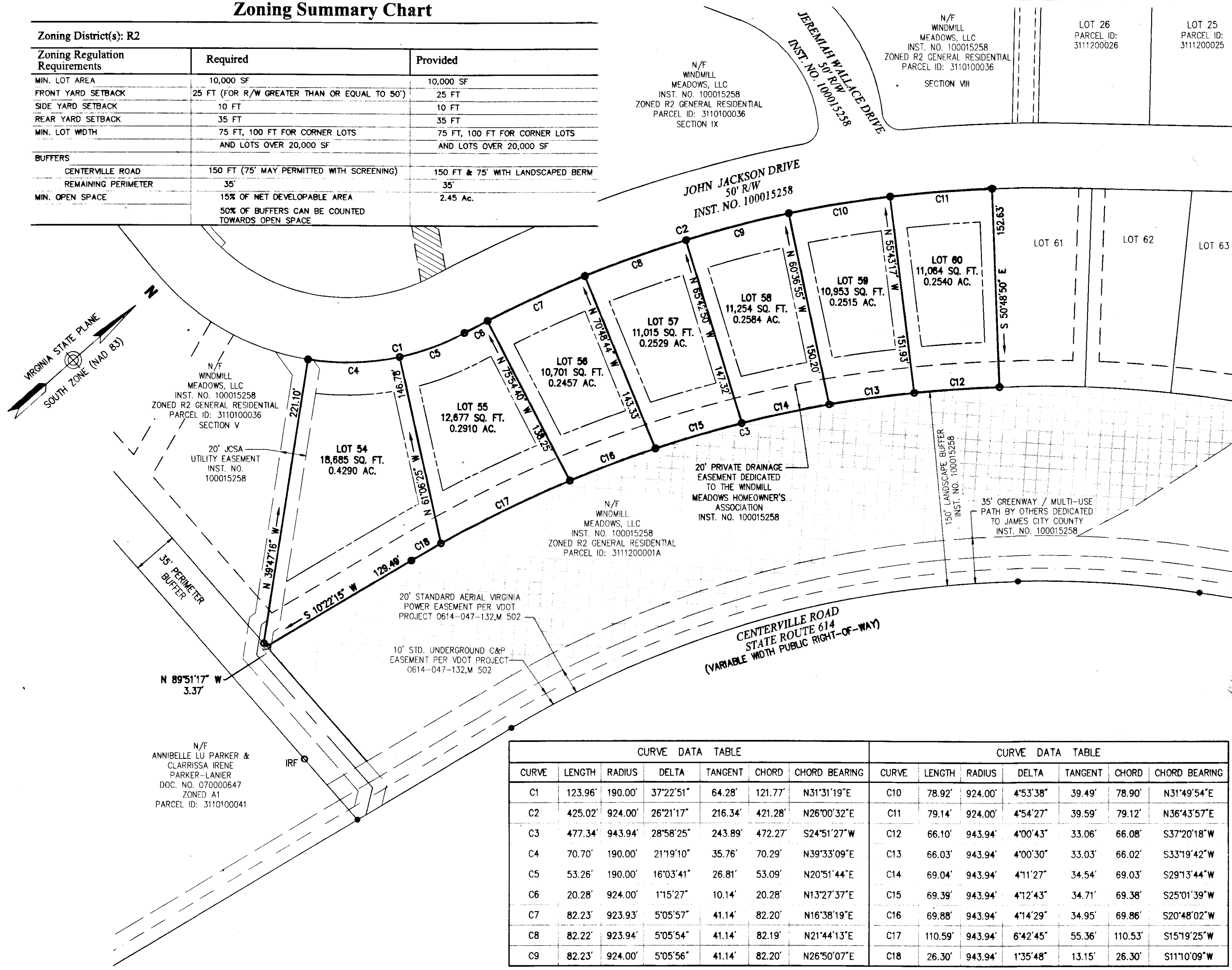


130016786

### Zoning Summary Chart

Zoning District(s): R2		
Zoning Regulation Requirements	Required	Provided
MIN. LOT AREA	10,000 SF	10,000 SF
FRONT YARD SETBACK	25 FT (FOR R/W GREATER THAN OR EQUAL TO 50')	25 FT
SIDE YARD SETBACK	10 FT	10 FT
REAR YARD SETBACK	35 FT	35 FT
MIN. LOT WIDTH	75 FT, 100 FT FOR CORNER LOTS AND LOTS OVER 20,000 SF	75 FT, 100 FT FOR CORNER LOTS AND LOTS OVER 20,000 SF
<b>BUFFERS</b>		
CENTERVILLE ROAD REMAINING PERIMETER	150 FT (75' MAY PERMITTED WITH SCREENING)	150 FT & 75' WITH LANDSCAPED BERM
MIN. OPEN SPACE	15% OF NET DEVELOPABLE AREA 50% OF BUFFERS CAN BE COUNTED TOWARDS OPEN SPACE	2.45 Ac.



**Vanasse Hangen Brustlin, Inc.**

Transportation  
Land Development  
Environmental Services

351 McLaws Circle, Suite 3  
Williamsburg, Virginia 23185  
757-220-0500 • FAX 757-220-8544

#### Legend

- SUBJECT AREA LIMITS
- PROPOSED RIGHT-OF-WAY
- PROPOSED PROPERTY LINE
- PROPOSED SETBACK LINE
- PRIVATE DRAINAGE EASEMENT
- JCSA UTILITY EASEMENT
- CONSERVATION EASEMENT DEDICATED TO JAMES CITY COUNTY INST. NO.

No.	Revision	Date	Appd.

Designed by: **CRO** Drawn by: **CRO** Checked by: **SAR**  
 CAD checked by: **SAR** Approved by: **SAR**  
 Scale: 1" = 50' Date: 3/22/13  
 Project Title: **Windmill Meadows Section IV Lots 54-60 James City County, Virginia**

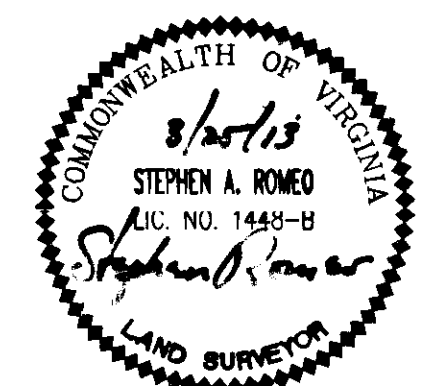
**Windmill Meadows Section IV**  
**Lots 54-60**  
 James City County, Virginia  
 Issued for:

CURVE DATA TABLE							CURVE DATA TABLE						
CURVE	LENGTH	RADIUS	DELTA	TANGENT	CHORD	CHORD BEARING	CURVE	LENGTH	RADIUS	DELTA	TANGENT	CHORD	CHORD BEARING
C1	123.96'	190.00'	37°22'51"	64.28'	121.77'	N31°31'19"E	C10	78.92'	924.00'	4°53'38"	39.49'	78.90'	N31°49'54"E
C2	425.02'	924.00'	26°21'17"	216.34'	421.28'	N26°00'32"E	C11	79.14'	924.00'	4°54'27"	39.59'	79.12'	N36°43'57"E
C3	477.34'	943.94'	28°58'25"	243.89'	472.27'	S24°51'27"W	C12	66.10'	943.94'	4°00'43"	33.06'	66.08'	S37°20'18"W
C4	70.70'	190.00'	21°19'10"	35.76'	70.29'	N39°33'09"E	C13	66.03'	943.94'	4°00'30"	33.03'	66.02'	S33°19'42"W
C5	53.26'	190.00'	16°03'41"	26.81'	53.09'	N20°51'44"E	C14	69.04'	943.94'	4°11'27"	34.54'	69.03'	S29°13'44"W
C6	20.28'	924.00'	1°15'27"	10.14'	20.28'	N13°27'37"E	C15	69.39'	943.94'	4°12'43"	34.71'	69.38'	S25°01'39"W
C7	82.23'	923.93'	5°05'57"	41.14'	82.20'	N16°38'19"E	C16	69.88'	943.94'	4°14'29"	34.95'	69.86'	S20°48'02"W
C8	82.22'	923.94'	5°05'54"	41.14'	82.19'	N21°44'13"E	C17	110.59'	943.94'	6°42'45"	55.36'	110.53'	S15°19'25"W
C9	82.23'	924.00'	5°05'56"	41.14'	82.20'	N26°50'07"E	C18	26.30'	943.94'	1°35'48"	13.15'	26.30'	S11°10'09"W



City of Williamsburg & County of James City  
 Circuit Court: This PLAT was recorded on  
17 March 2013  
 at 11:44 AM/PM, PB PG  
 Document # 130016786  
 BETSY B. WOOLRIDGE, CLERK  
 Dep. Clerk

2 Large/Small Plat(s) Recorded  
 herewith as # 130016786



Drawing Number  
**Sd-2**

Sheet of  
 2 2  
 Project Number  
 31915.01