

130016344

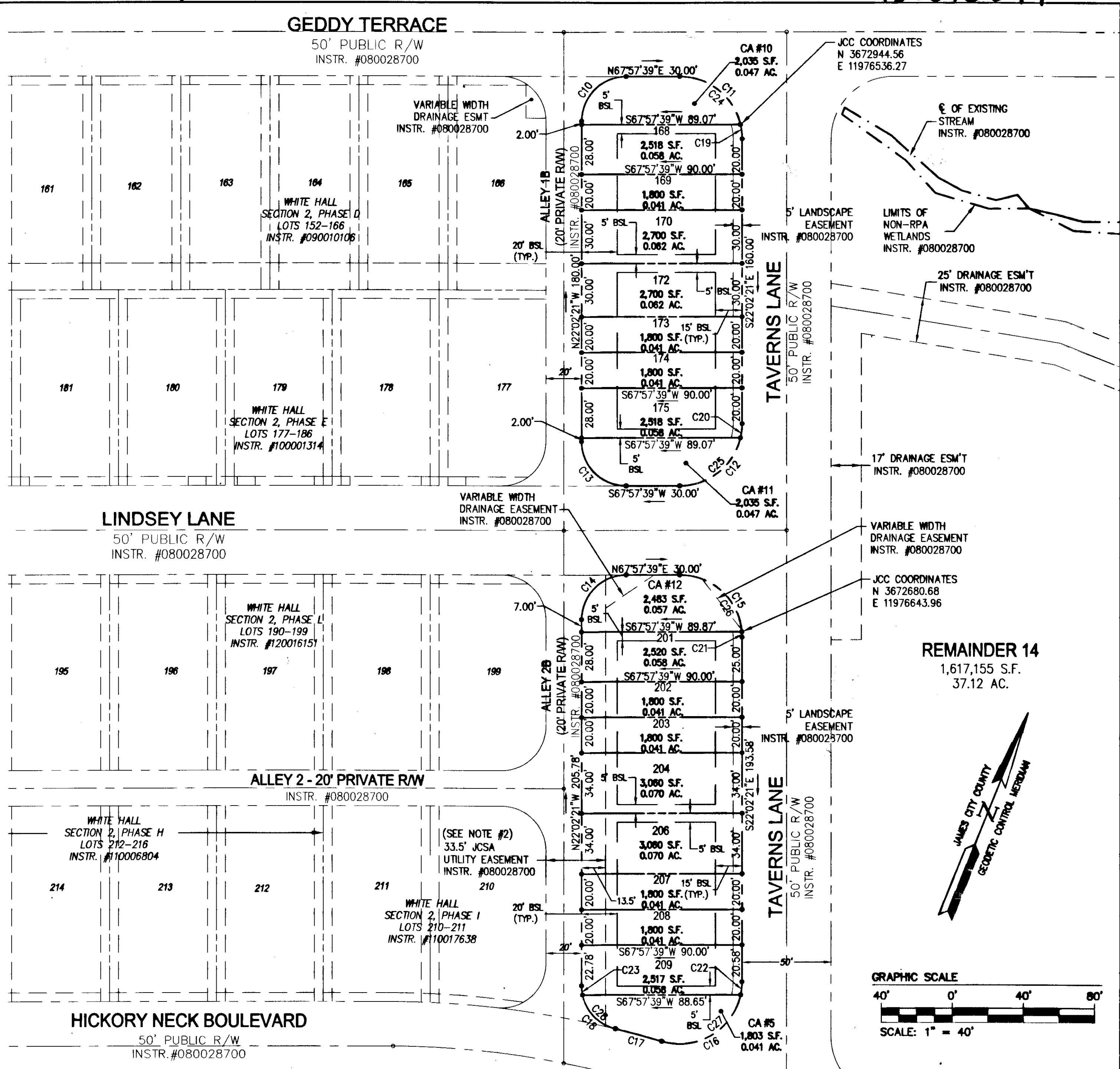
CURVE TABLE (ROAD)						
CURVE #	DELTA	RADIUS	LENGTH	TANGENT	CHORD	CHORD BEARING
C10	90°00'00"	25.00'	39.27'	25.00'	35.36'	N22°57'39"E
C11	90°00'00"	35.00'	54.98'	35.00'	49.50'	S67°02'21"E
C12	90°00'00"	35.00'	54.98'	35.00'	49.50'	S22°57'39"W
C13	90°00'00"	25.00'	39.27'	25.00'	35.36'	N67°02'21"W
C14	90°00'00"	25.00'	39.27'	25.00'	35.36'	N22°57'39"E
C15	90°00'00"	35.00'	54.98'	35.00'	49.50'	S67°02'21"E
C16	106°41'09"	35.00'	65.17'	47.03'	56.16'	S31°18'14"W
C17	2°55'45"	525.00'	26.84'	13.42'	26.84'	S83°10'56"W
C18	76°14'35"	25.00'	33.27'	19.62'	30.87'	N60°09'38"W

CURVE TABLE (LOTS AND COMMON AREA)						
CURVE #	DELTA	RADIUS	LENGTH	TANGENT	CHORD	CHORD BEARING
C19	131°2'47"	35.00'	8.07'	4.05'	8.05'	S28°38'44"E
C20	131°2'47"	35.00'	8.07'	4.05'	8.05'	S15°25'57"E
C21	4°55'02"	35.00'	3.00'	1.50'	3.00'	S24°29'52"E
C22	12°14'23"	35.00'	7.48'	3.75'	7.46'	S15°55'09"E
C23	12°03'31"	25.00'	5.26'	2.64'	5.25'	N28°04'06"W
C24	76°47'13"	35.00'	46.91'	27.73'	43.47'	S73°38'44"E
C25	76°47'13"	35.00'	46.91'	27.73'	43.47'	S29°34'03"W
C26	85°04'58"	35.00'	51.97'	32.12'	47.33'	S69°29'52"E
C27	94°26'47"	35.00'	57.69'	37.83'	51.38'	S37°25'25"W
C28	64°11'05"	25.00'	28.01'	15.68'	26.56'	N66°11'24"W

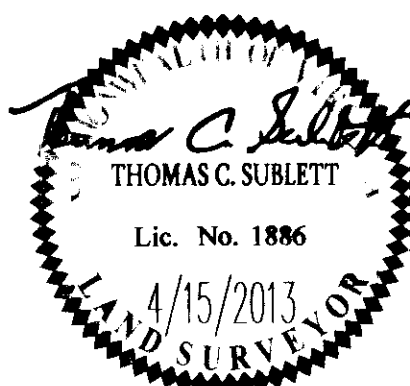
NOTE #1:
CA = COMMON AREA

NOTE #2:
JCSA UTILITY EASEMENT RECORDED BY INSTRUMENT 080028700 AND SHOWN THEREON AS A 33.5' WIDTH EASEMENT WAS ERRONEOUSLY LABELED AS A 30' WIDTH EASEMENT. THE EASEMENT IS IN FACT A 33.5' JCSA EASEMENT OVER THE WIDTH OF THE 20' ALLEY AND 13.5' ALONG AND INTO LOTS 201-204, 206-209, CA#5 AND CA#12.

Large Scale Plats Recorded herewith as # 130016344



City of Williamsburg & County of James City Circuit Court: This PLAT was recorded on 10 July 2013		
at 2:43 AM/PM, PB	PG	
Document # 130016344		
BETSY B. WOOLRIDGE, CLERK		
By <i>[Signature]</i> , Dep. Clerk		
1	6/5/13	JFS
Rev.	Date	Revised By



AES
CONSULTING ENGINEERS
Hampton Roads | Central Virginia | Middle Peninsula
5246 Old Towne Road, Suite 1
Williamsburg, Virginia 23188
Phone: (757) 253-0040
Fax: (757) 220-8994
www.aesva.com

**PLAT OF SUBDIVISION OF
REMAINDER 2 AND REMAINDER 6
WHITE HALL
SECTION 2, PHASE M
OWNER: RAUCH DEVELOPMENT CO., L.L.C.
JCC CASE NO. S-0022-2012**
STONEHOUSE DISTRICT | JAMES CITY COUNTY | VIRGINIA

Project Contacts: TCS/JFS
Project Number: 9048-11
Scale: 1"=50'
Date: 4/15/13
Sheet Number
2 OF 2