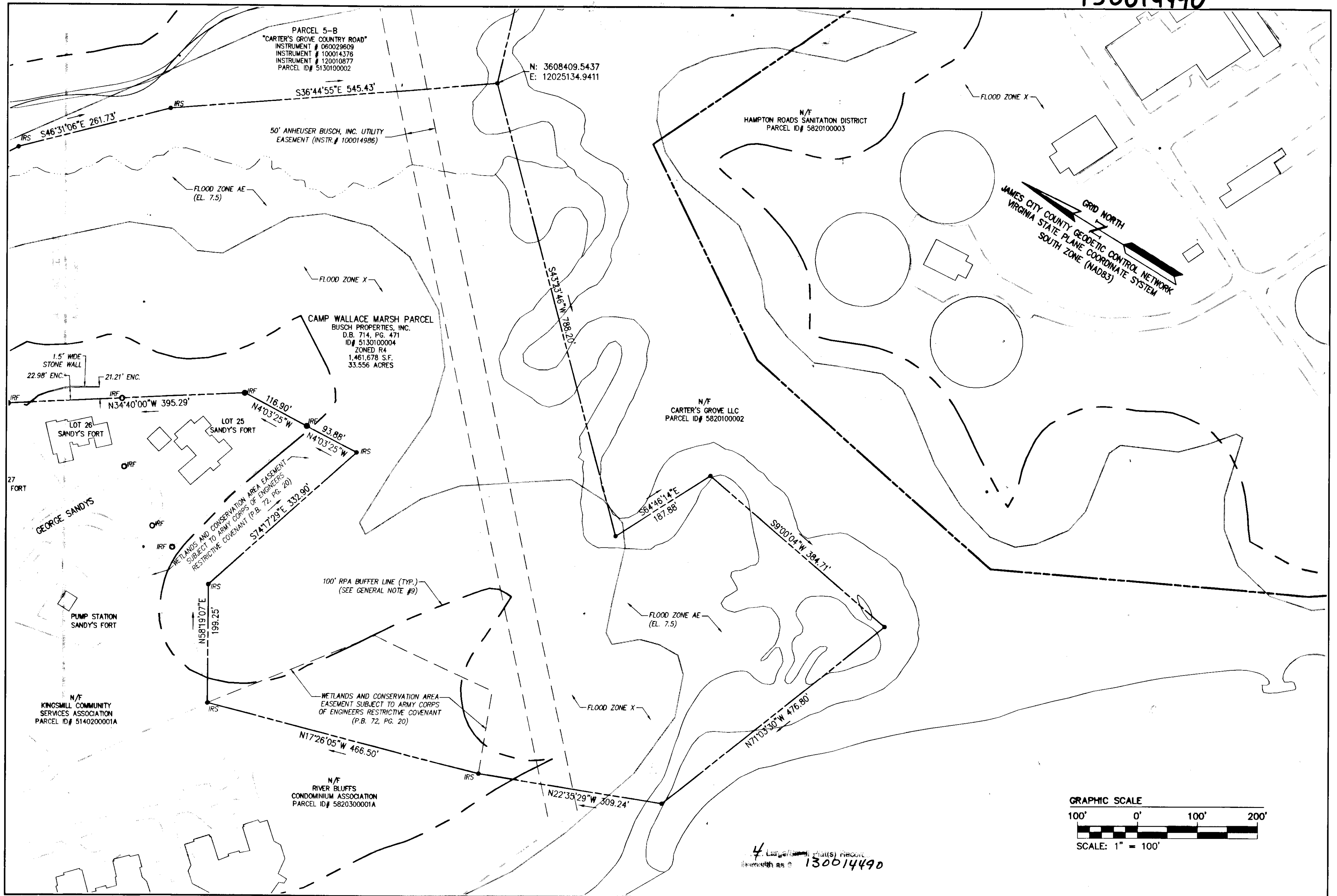
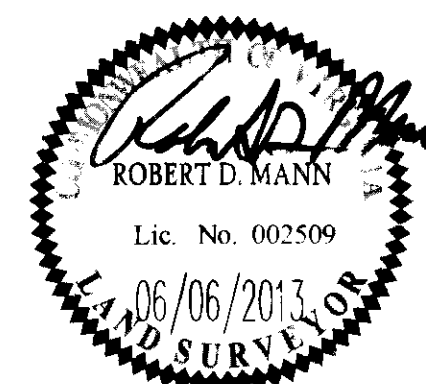


130014490



Rev	Date	Revised

City of Williamsburg & County of James City
Circuit Court: This PLAT was recorded on
13 June 2013
at *11:54* AM/PM, PG. *PG*
Document # *130014490*
BETSY B. WOOLRIDGE, CLERK
By Claudia ... Dep. Clerk



AES
CONSULTING ENGINEERS
Hampton Roads | Central Virginia | Middle Peninsula

1317 Executive Blvd, Suite 150
Chesapeake, Virginia 23320
Phone: (757) 410-7436
www.aesva.com

BOUNDARY SURVEY
CAMP WALLACE MARSH PARCEL

PROPERTY OF
BUSCH PROPERTIES, INC.

ROBERTS DISTRICT COUNTY OF JAMES CITY VIRGINIA

Project Contacts:	RDM
Project Number:	H10047
Scale:	1"=100'
Date:	06/08/2013
Sheet Number	4