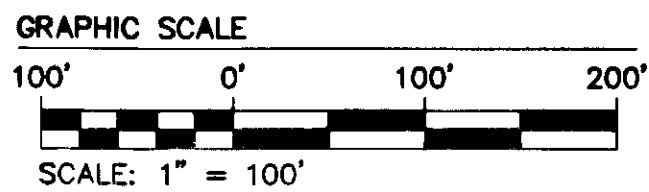
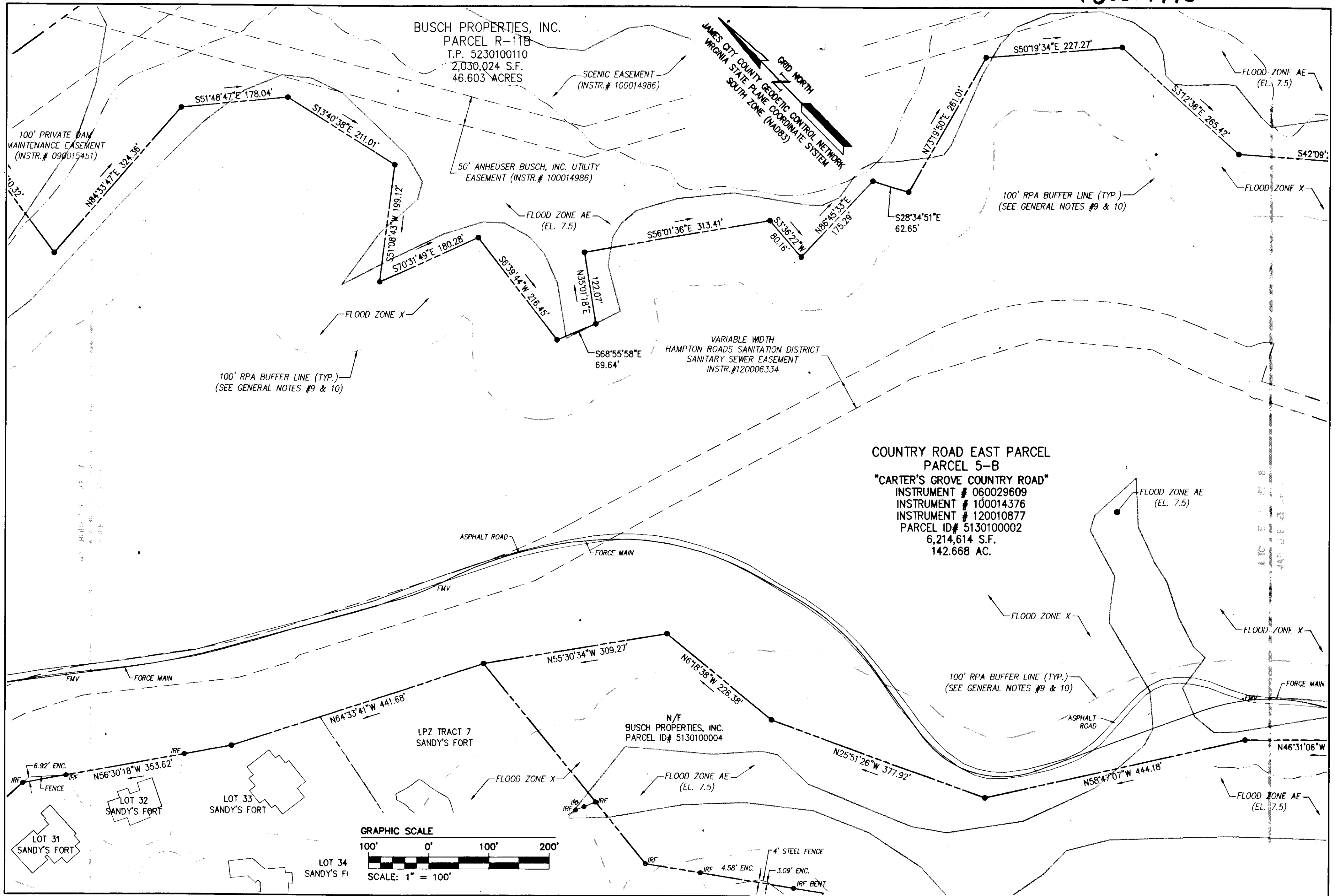


130014475



Rev	Date	Description	Revised by

City of Williamsburg & County of James City  
 Circuit Court: This PLAT was recorded on  
June 13, 2013  
 at 11:09 AM/PMA PB = PG =  
 Document # 130014475  
 BETSY B. WOOLRIDGE, CLERK  
Patrick H. Malone, Dep. Clerk



**RES**  
 CONSULTING ENGINEERS  
 1317 Executive Blvd, Suite 150  
 Chesapeake, Virginia 23320  
 Phone: (757) 410-7436  
 www.aesva.com  
 Hampton Roads | Central Virginia | Middle Peninsula  
 2  
 130014475

BOUNDARY SURVEY  
 COUNTRY ROAD EAST PARCEL  
 PROPERTY OF  
**BUSCH PROPERTIES, INC.**  
 ROBERTS DISTRICT    COUNTY OF JAMES CITY    VIRGINIA

Project Contacts:	RDM
Project Number:	H10047
Scale:	Date:
1"=100'	06/06/2013
Sheet Number	
<b>7</b>	