

THIS SHEET PROVIDED TO PROVIDE GEOMETRY FOR CONSERVATION EASEMENT ONLY. BOUNDARY INFORMATION SHOWN ON SHEET 1.

COMPILED PLAT SHOWING 130013878  
CONSERVATION EASEMENTS TO BE DEDICATED TO JAMES CITY COUNTY ON THE PROPERTY OF

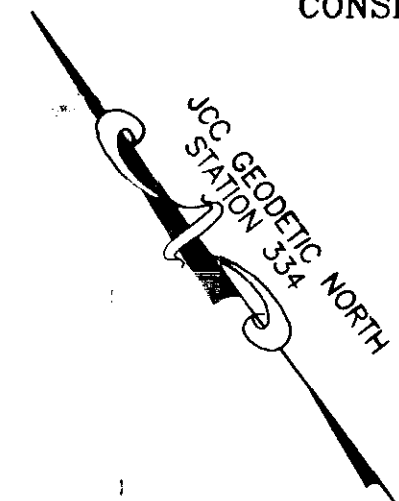
**HAMPTON ROADS DEVELOPMENT, LLC**

JAMESTOWN DISTRICT  
JAMES CITY COUNTY, VIRGINIA

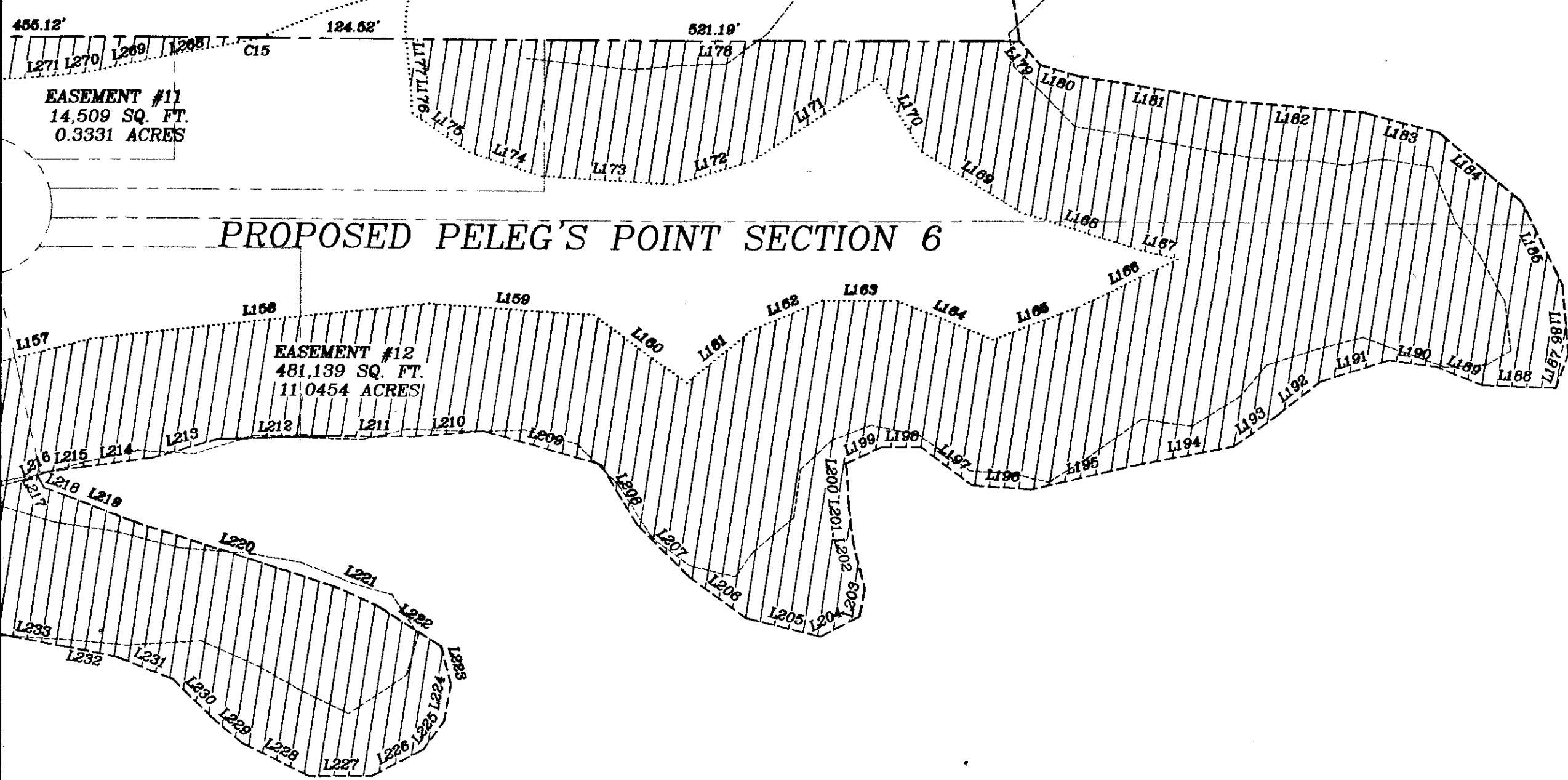
ADPA A.D. POTTS & ASSOCIATES, INC.  
11524 JEFFERSON AVENUE  
NEWPORT NEWS, VIRGINIA 23601  
PHONE: (757) 595-4810

1" = 100' FEBRUARY 11, 2013  
REV. MARCH 25, 2013

SHEET 5 OF 5

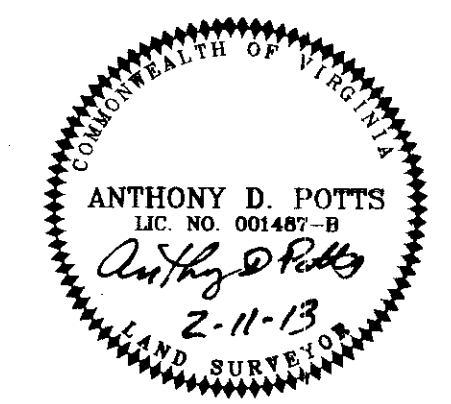


BORDER IS MATCHLINE



5 Large/Small Plats Recorded herewith as # 130013878

City of Williamsburg & County of James City  
Circuit Court: This PLAT was recorded on  
6 June 2013  
at 12:10 AM/PM, PB PG  
Document # 130013878  
BETSY B. WOOLRIDGE, CLERK  
By *[Signature]* Dep. Clerk



I HEREBY CERTIFY THAT THIS COMPILED SURVEY, BASED ON A PARTIAL FIELD SURVEY IS, TO THE BEST OF MY KNOWLEDGE AND BELIEF, CORRECT AND COMPLIES WITH THE MINIMUM PROCEDURES AND STANDARDS ESTABLISHED BY THE VIRGINIA BOARD FOR ARCHITECTS, PROFESSIONAL ENGINEERS, LAND SURVEYORS, CERTIFIED INTERIOR DESIGNERS AND LANDSCAPE ARCHITECTS.

*[Signature]*  
ANTHONY D. POTTS L.S.

JOB # 13-021  
PP6-CONS-ESMT.DWG  
HRD/ERD



FILE NO. 10-1197