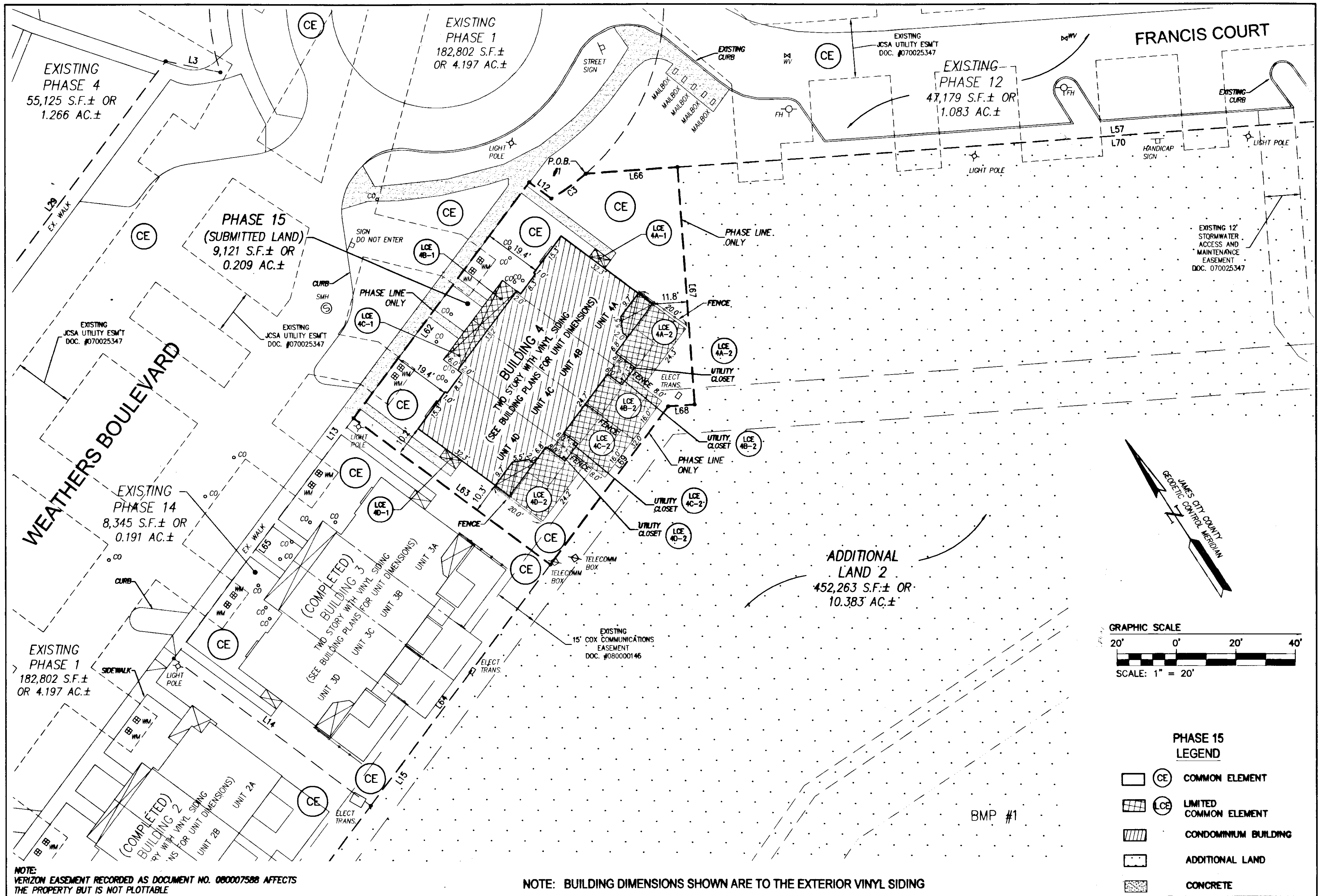
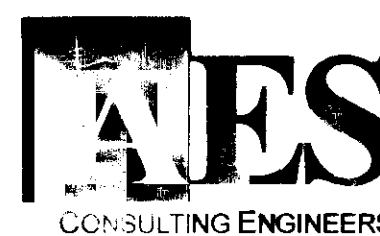
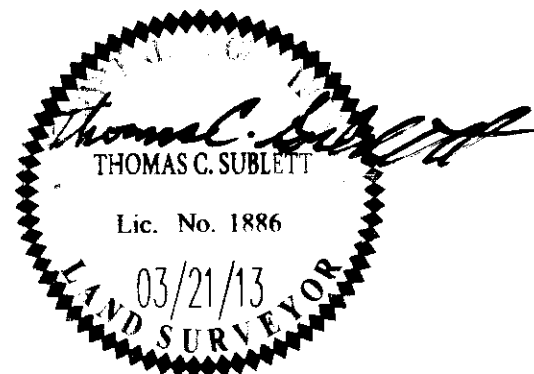


130009630



City of Williamsburg & County of James City Circuit Court: This PLAT was recorded on 10 April 2013 at 12:30 AM/PM, PG -- Document # 130009630 BETSY B. WOOLRIDGE, CLERK By <i>[Signature]</i> Dep. Clerk	Rev. Date	Revised By
--	-----------	------------



5248 Olde Towne Road, Suite 1
Williamsburg, Virginia 23188
Phone: (757) 253-0040
Fax: (757) 220-8994
www.aesva.com

Hampton Roads | Central Virginia | Middle Peninsula

**PLAT OF CONDOMINIUM
WEATHERLY AT WHITEHALL
PHASE 15**

3 Large/Small Plat(s) Recorded
herein as # 130009630

STONEHOUSE DISTRICT JAMES CITY COUNTY VIRGINIA

Project Contacts: JFS
Project Number: 9048-09
Scale: 1"=20'
Date: 03/21/13
Sheet Number
3 OF 3