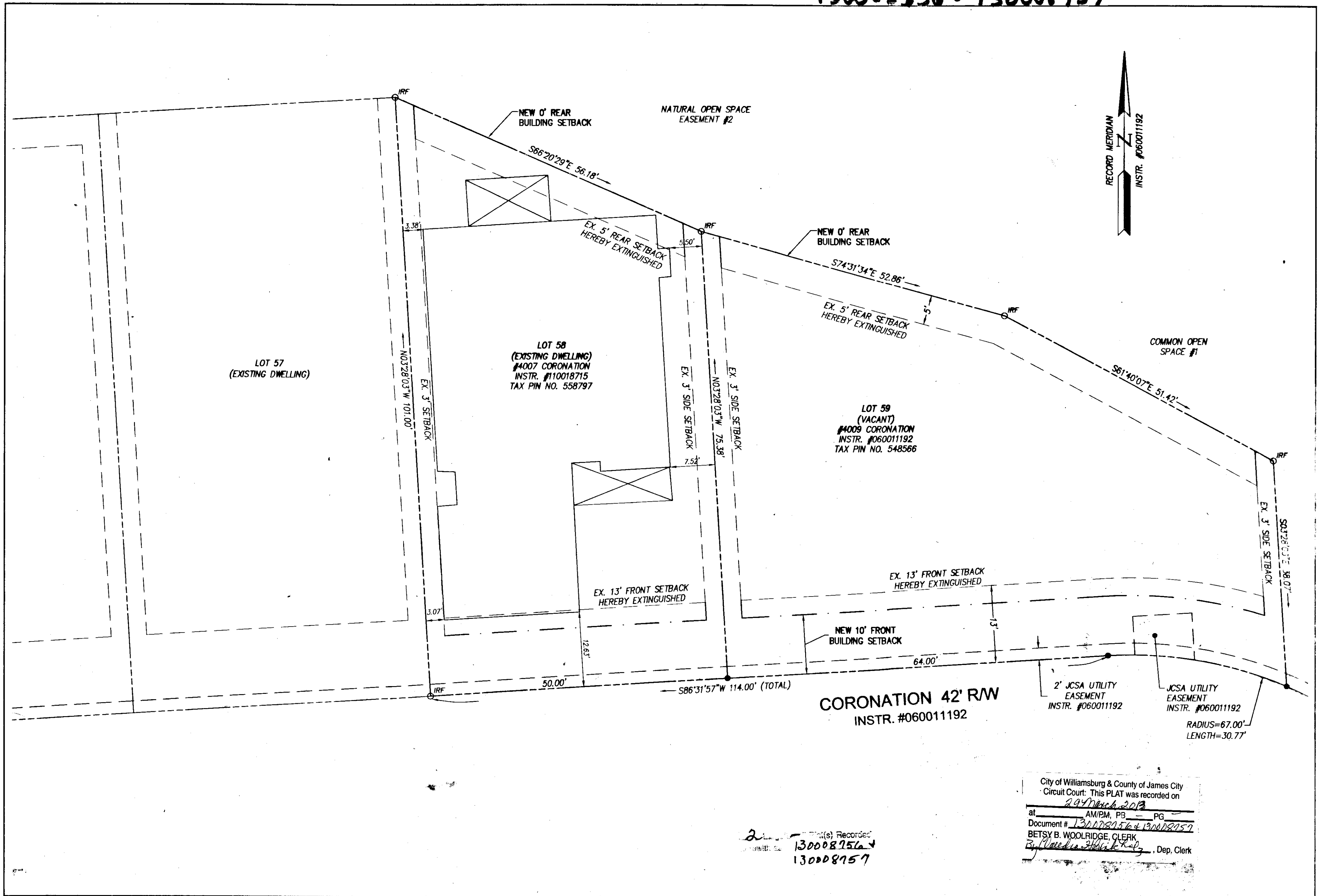


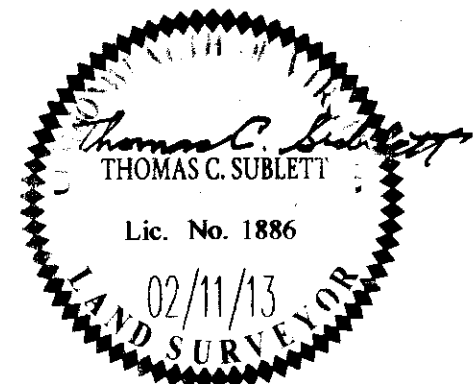
130008956 • 130008757



2 (s) Recorded
 130008956
 130008757

City of Williamsburg & County of James City
 Circuit Court: This PLAT was recorded on
 29 March 2013
 at AM/PM, PG
 Document # 130008956 & 130008757
 BETSY B. WOOLRIDGE, CLERK
 Dep. Clerk

Rev.	Date	Description	Revised By



AES
 CONSULTING ENGINEERS
 Hampton Roads | Central Virginia | Middle Peninsula

5248 Olde Towne Road, Suite 1
 Williamsburg, Virginia 23188
 Phone: (757) 253-0040
 Fax: (757) 220-8994
 www.aesva.com

PLAT SHOWING BUILDING SETBACK ADJUSTMENTS
THE SETTLEMENT AT POWHATAN CREEK
 PHASE I
 LOTS 58 AND 59
 JCC #S-0001-2013

BERKELEY DISTRICT | JAMES CITY COUNTY | VIRGINIA

Project Contacts: HWP/TCS
 Project Number: 9254-02
 Scale: 1"=10'
 Date: 02-11-13
 Sheet Number
2 of 2