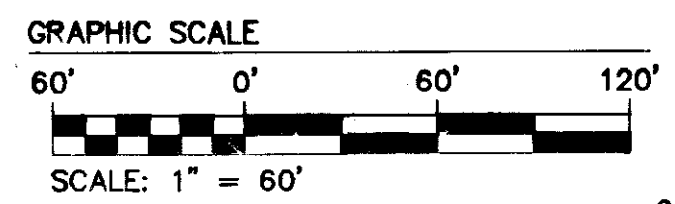


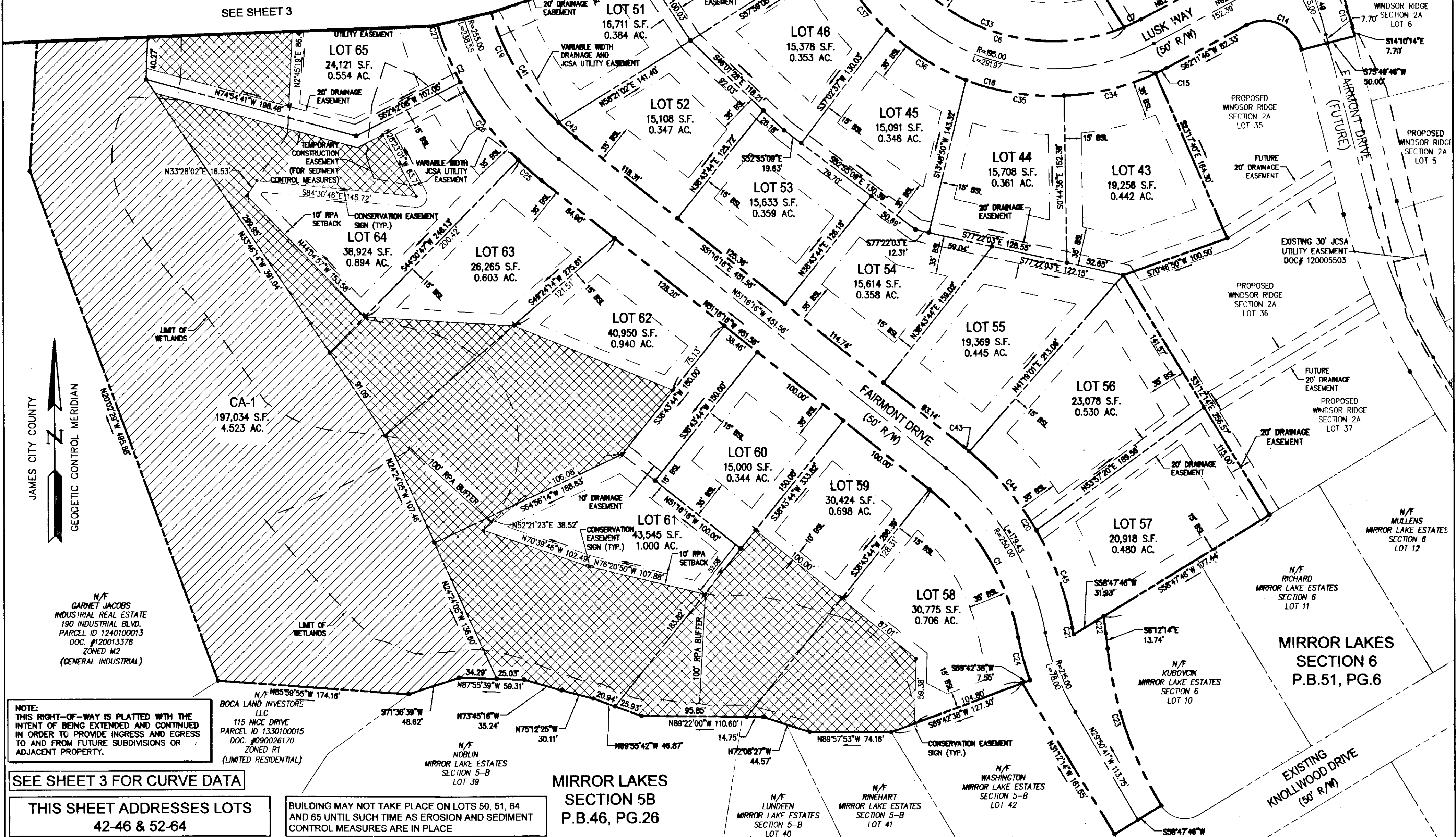
130008586

LEGEND:

- AREA OF NATURAL OPEN SPACE TO BE DEDICATED BY EASEMENT TO JAMES CITY COUNTY SECTION 2B (197,033 S.F.; 4.52 AC)
- AREA OF PRIVATE NATURAL OPEN SPACE TO BE DEDICATED BY EASEMENT TO JAMES CITY COUNTY SECTION 2B (129,869 SF; 2.98 AC)



NOTES POSITION OF CONSERVATION EASEMENT SIGN



NOTE: THIS RIGHT-OF-WAY IS PLATTED WITH THE INTENT OF BEING EXTENDED AND CONTINUED IN ORDER TO PROVIDE INGRESS AND EGRESS TO AND FROM FUTURE SUBDIVISIONS OR ADJACENT PROPERTY.

SEE SHEET 3 FOR CURVE DATA

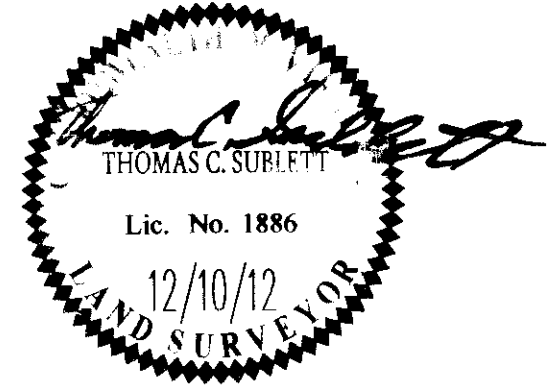
THIS SHEET ADDRESSES LOTS 42-46 & 52-64

BUILDING MAY NOT TAKE PLACE ON LOTS 50, 51, 64 AND 65 UNTIL SUCH TIME AS EROSION AND SEDIMENT CONTROL MEASURES ARE IN PLACE

MIRROR LAKES SECTION 5B P.B.46, PG.26

1	2/28/13	REVISION PER MUNICIPAL REVIEW AND COMMENT	LBA
Rev	Date	Description	Revised By

City of Williamsburg & County of James City  
Circuit Court: This PLAT was recorded on  
28 Mar 2013  
at 10:38 AM/PM, PB -- PG --  
Document # 130008586  
BETSY B. WOOLRIDGE, CLERK  
By Thomas C. Sublett, Dep. Clerk



**AES**  
CONSULTING ENGINEERS  
Hampton Roads | Central Virginia | Middle Peninsula  
5248 Olde Towne Road, Suite 1  
Williamsburg, Virginia 23188  
Phone: (757) 253-0040  
Fax: (757) 220-8994  
www.aesva.com

PLAT OF SUBDIVISION  
WINDSOR RIDGE SECTION 2B  
LOTS 38-68  
BEING THE PROPERTY OF  
BOCA LAND INVESTORS, LLC.  
STONEHOUSE DISTRICT JAMES CITY COUNTY VIRGINIA

Project Contacts:	TCS
Project Number:	8223-13
Scale:	1" = 60'
Date:	12/10/12
Sheet Number	2 OF 4