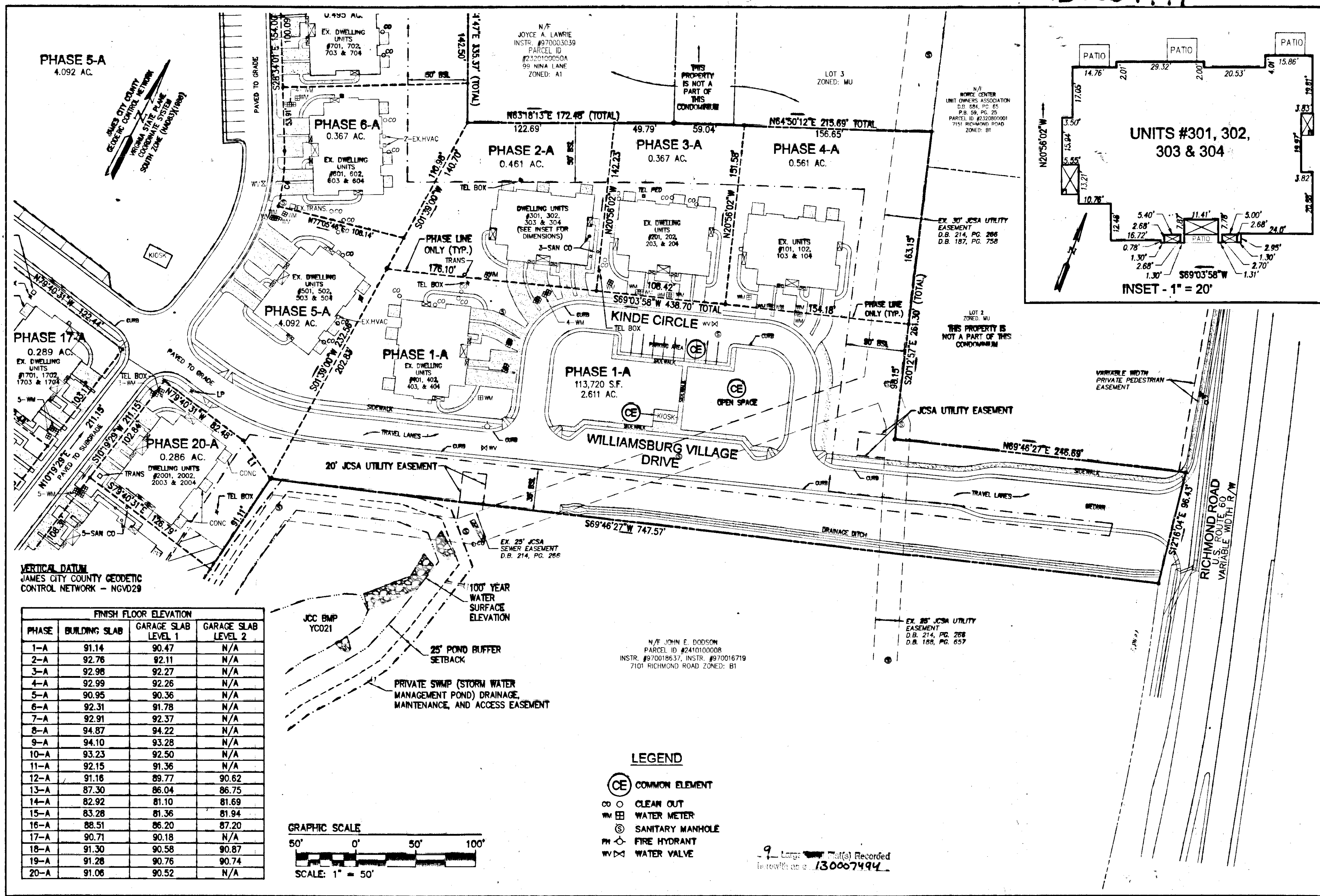
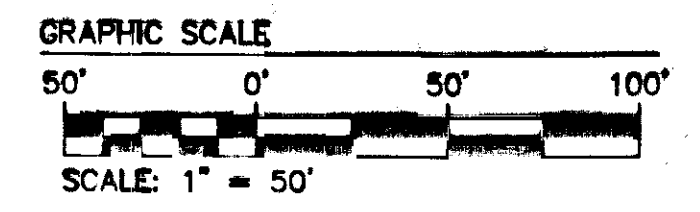


130007494



VERTICAL DATUM
JAMES CITY COUNTY GEODETIC
CONTROL NETWORK - NGVD29

FINISH FLOOR ELEVATION			
PHASE	BUILDING SLAB	GARAGE SLAB LEVEL 1	GARAGE SLAB LEVEL 2
1-A	91.14	90.47	N/A
2-A	92.76	92.11	N/A
3-A	92.98	92.27	N/A
4-A	92.99	92.26	N/A
5-A	90.95	90.36	N/A
6-A	92.31	91.78	N/A
7-A	92.91	92.37	N/A
8-A	94.87	94.22	N/A
9-A	94.10	93.28	N/A
10-A	93.23	92.50	N/A
11-A	92.15	91.36	N/A
12-A	91.16	89.77	90.62
13-A	87.30	86.04	86.75
14-A	82.92	81.10	81.69
15-A	83.28	81.36	81.94
16-A	88.51	86.20	87.20
17-A	90.71	90.18	N/A
18-A	91.30	90.58	90.87
19-A	91.28	90.76	90.74
20-A	91.06	90.52	N/A

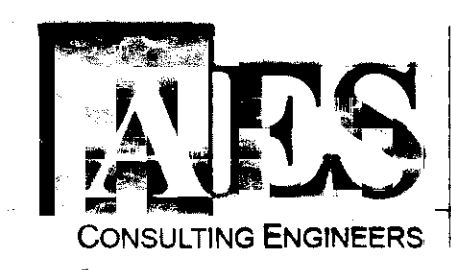
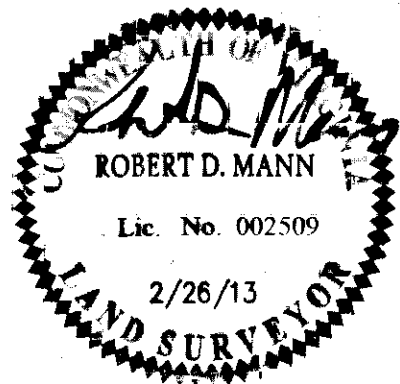


- LEGEND**
- COMMON ELEMENT
 - CLEAN OUT
 - WATER METER
 - SANITARY MANHOLE
 - FIRE HYDRANT
 - WATER VALVE

9 Large Plat(s) Recorded
in review as 130007494

Rev.	Date	Description	Revised by

City of Williamsburg & County of James City
Circuit Court: This PLAT was recorded on
March 18, 2013
at 10:56 AM/PM PG
Document # 130007494
BETSY B. WOOLRIDGE, CLERK
Betsy Woolridge, Dep. Clerk



5248 Old Towne Road, Suite 1
Williamsburg, Virginia 23188
Phone: (757) 253-0040
Fax: (757) 220-8994
www.aesva.com

"EXHIBIT 1"
PLAT OF CONDOMINIUM
WILLIAMSBURG VILLAGE AT NORGE CONDOMINIUM
PHASE 2-A
UNITS #301, 302, 303, AND 304
STONEHOUSE DISTRICT COUNTY OF JAMES CITY VIRGINIA

Project Contacts: AES
Project Number: 9286-02-B
Scale: 1"=50' Date: 02-26-2013
Sheet Number
2 OF 9