

- INDICATES ADDITIONAL LAND WITHIN PHASE 2D BOUNDARIES
- INDICATES LIMITED COMMON ELEMENT
- INDICATES UNIT AREA
- INDICATES COMMON ELEMENT
- \*LCE=LIMITED COMMON ELEMENT

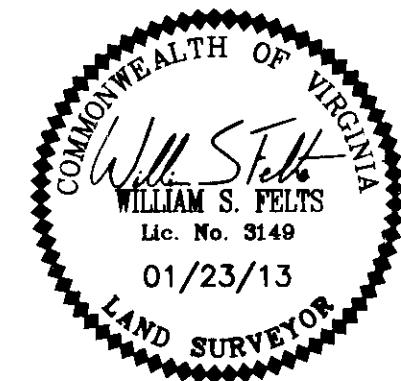
**SURVEYORS CERTIFICATE**

I HEREBY CERTIFY THAT THE PLAN PREVIOUSLY RECORDED FOR GOVERNOR'S GROVE AT FIVE FORKS, A CONDOMINIUM AT INSTRUMENT 090022560 ACCURATELY DEPICTS THE UNIT AND RELATED IMPROVEMENTS SHOWN AND THAT THEY COMPLY WITH THE CODE OF VIRGINIA OF 1950, AS AMENDED 55-79.58(B) AND ARE SUBSTANTIALLY COMPLETE.

I HEREBY CERTIFY THAT THIS PLAT IS ACCURATE AND COMPLIES WITH THE PROVISIONS OF SECTION 55-79.58 (A) OF THE CODE OF VIRGINIA 1950 AS AMENDED AND I FURTHER CERTIFY THAT ALL UNITS DEPICTED HEREON HAVE BEEN SUBSTANTIALLY COMPLETE.

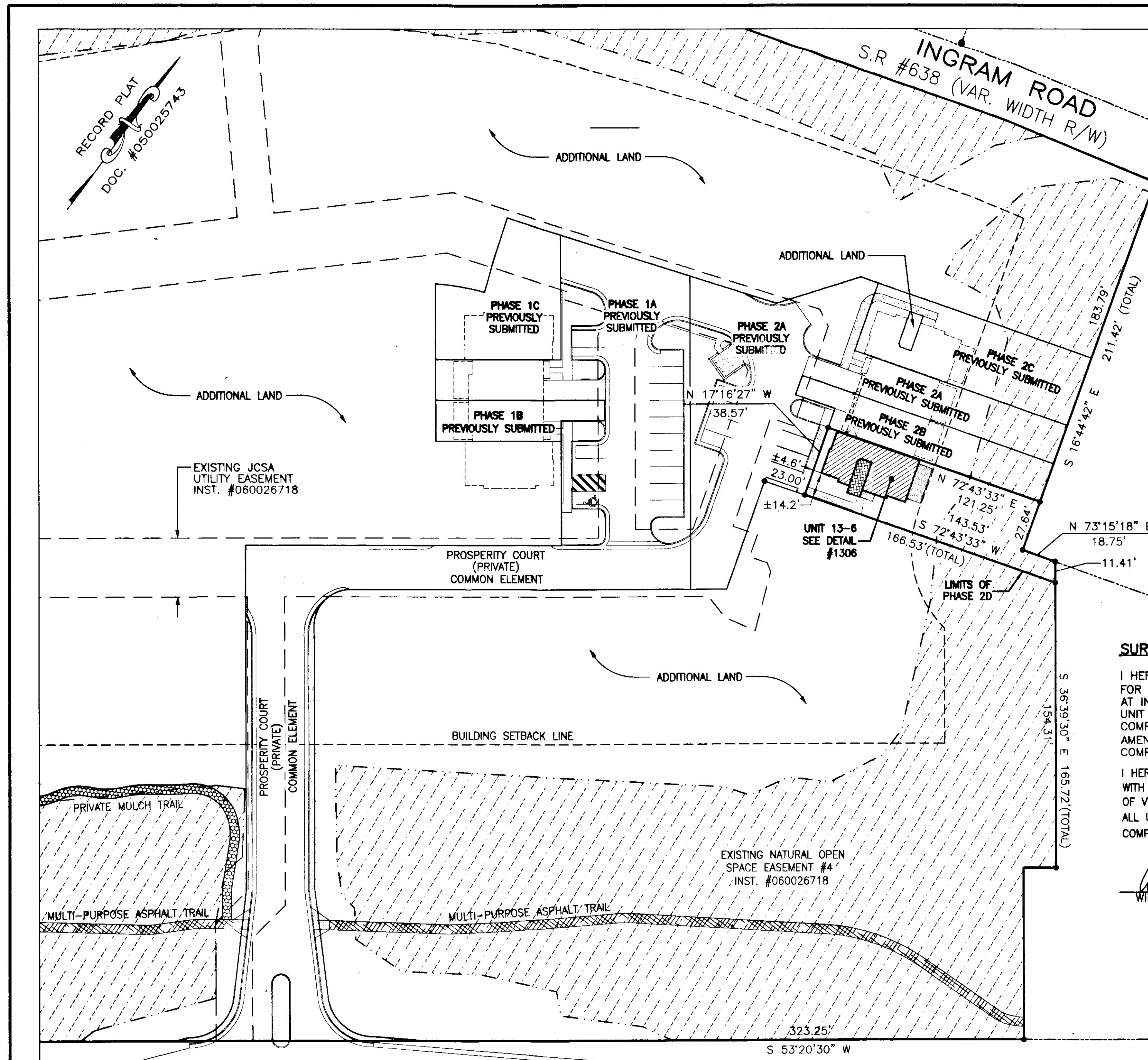
*William S. Felts*  
 WILLIAM S. FELTS LIC.# 3149

01/23/13  
 DATE

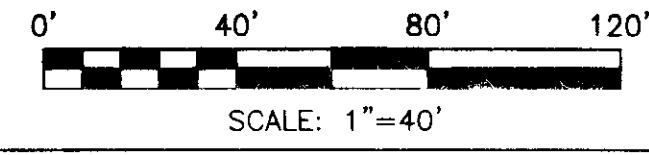


2 Large/Small Plot(s) Recorded  
 herewith as # 130003123.

PLAT OF  
 PHASE 2D  
 GOVERNOR'S GROVE AT FIVE FORKS  
 A CONDOMINIUM  
 LOCATED IN THE BERKELEY DISTRICT  
 JAMES CITY COUNTY, VIRGINIA  
 DATE: 01/23/13 SCALE: 1" = 40' JOB# 08-480  
 SHEET 2 OF 2



JOHN TYLER HIGHWAY  
 STATE ROUTE #5  
 (VARIABLE WIDTH PUBLIC R/W)



UNIT NUMBER	UNIT TYPE	STREET ADDRESS	PARCEL ID#
13-6	C(R)	#1306 PROSPERITY CT	4712101306

City of Williamsburg & County of James City  
 Circuit Court: This PLAT was recorded on  
 31 Jan 2013  
 at 9:56 AM/PM, PG \_\_\_\_\_  
 Document # 130003123  
 BETSY B. WOOLRIDGE, CLERK  
 Dep. Clerk

**LandTech Resources, Inc.**  
 Surveying • Engineering • GPS  
 205-E Bulifant's Bldg. Williamsburg, VA 23188  
 Phone: (757) 565-1677 Fax: (757) 565-0782  
 web: landtechresources.com