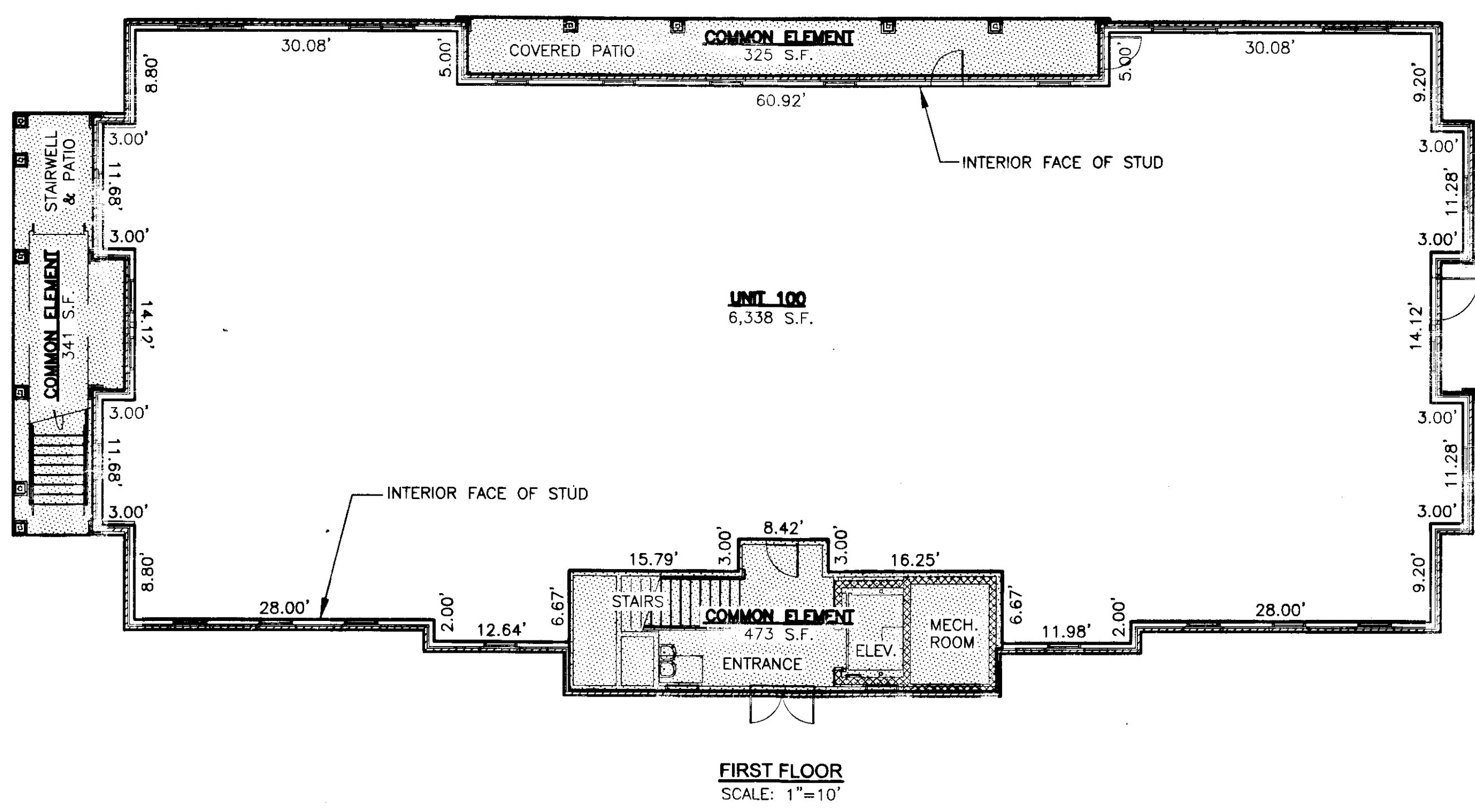


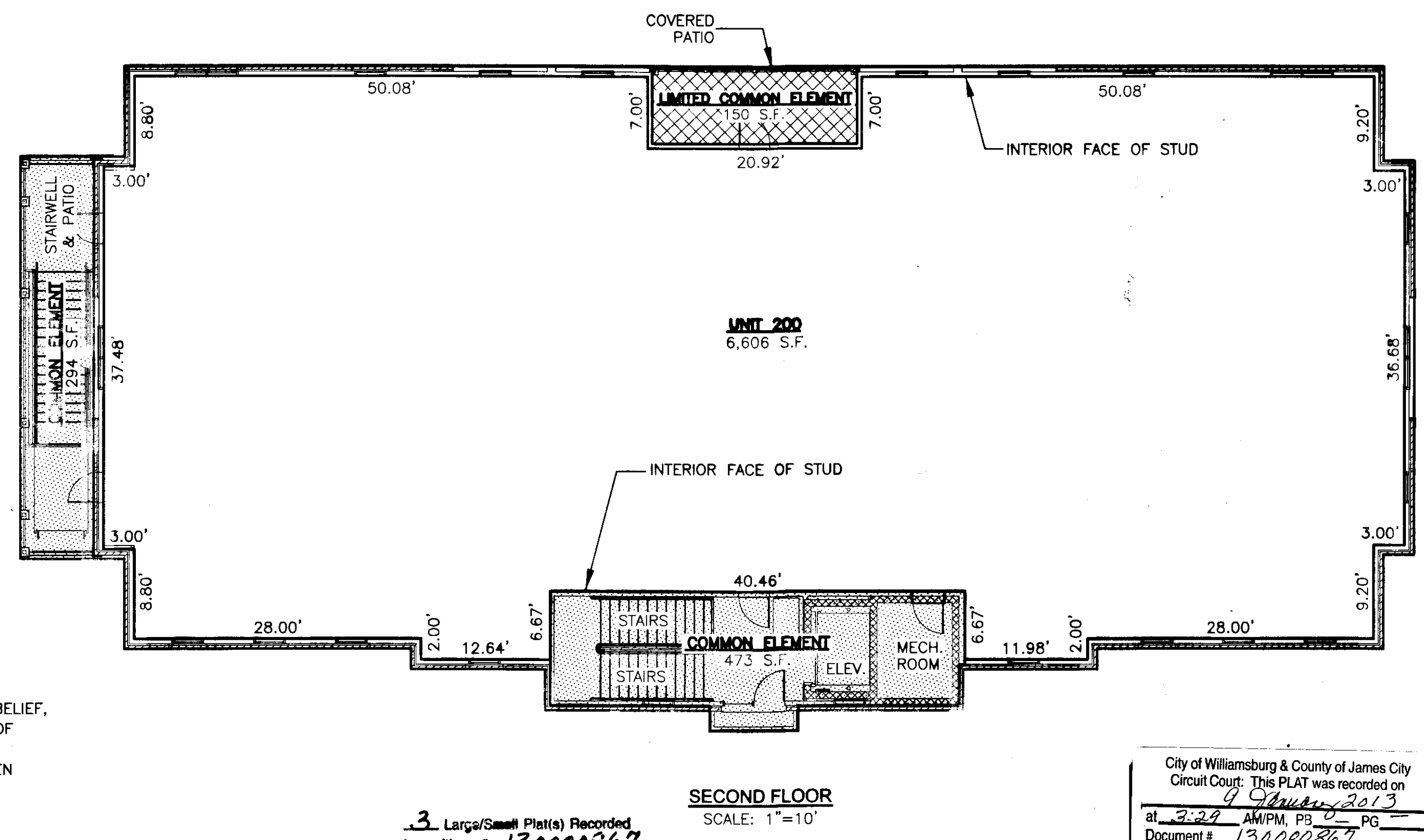
PLANS OF 432 McLAWS
McLAW'S PROFESSIONAL CENTER, A CONDOMINIUM
 ROBERTS DISTRICT, JAMES CITY COUNTY, VIRGINIA
 DATE: 11-19-2012 SCALE: 1" = 10' JOB# 07-340
 SHEET 2 OF 3

LandTech
 Resources, Inc.
 Surveying • Engineering • GPS
 205-E-Bulifants Blvd., Williamsburg, VA 23188
 Phone: (757) 565-1677 Fax: (757) 565-0782
 web: landtechresources.com



NOTE:
 A. **Unit Boundaries.** A Unit consists of a portion of the Condominium designed and intended for individual ownership and use. The boundary of the individual units are as set out in the Declaration of Condominium recorded as Instrument No. 10028271 in the Circuit Court of the County of James City.
 B. **Air Conditioning/Heating/Mechanical.** The air conditioning, refrigerating, ventilation and heating equipment and water, sewer utility and electrical lines within the Unit, and the air conditioning, refrigerating, ventilation and heating equipment, water, sewer, utility and electrical lines, and other apparatus in connection therewith, which serve one Unit, wherever located, shall be owned by the Unit Owner as part of the Unit and are not part of Common Elements.

- LEGEND**
- COMMON ELEMENT FOR ALL UNITS WITHIN THIS BUILDING UNLESS OTHERWISE NOTED
 - UNIT AREA
 - LIMITED COMMON ELEMENT (FOR UNIT 200 ONLY)



SURVEYORS CERTIFICATE
 I HEREBY CERTIFY THAT TO THE BEST OF MY KNOWLEDGE OR BELIEF, THIS PLAT IS ACCURATE AND COMPLIES WITH THE PROVISIONS OF SECTION 55-79.58 (B) OF THE CODE OF VIRGINIA 1950 AS AMENDED AND THAT ALL UNITS DEPICTED HEREON HAVE BEEN SUBSTANTIALLY COMPLETED.

William S. Felts
 STATE CERTIFIED LAND SURVEYOR

11-19-2012
 DATE

3 Large/Small Plat(s) Recorded
 herewith as # 130000967

City of Williamsburg & County of James City
 Circuit Court: This PLAT was recorded on
 at 3:29 AM/PM, PB 0 PG
 Document # 130000967
 BETSY B. WOOLRIDGE, CLERK
Betsy Woolridge, Dep. Clerk