

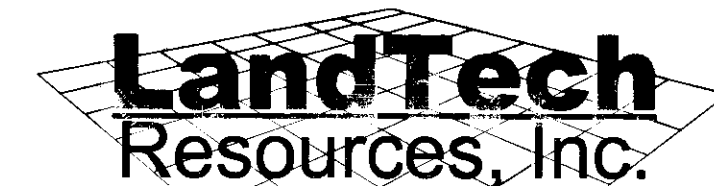
120026325

NOTES:

1. WETLANDS AND LAND WITHIN RESOURCE PROTECTION AREAS SHALL REMAIN IN A NATURAL UNDISTURBED STATE EXCEPT FOR THOSE ACTIVITIES PERMITTED BY SECTION 23-7 (c) (1) OF THE JAMES CITY COUNTY CODE.
2. NATURAL OPEN SPACE EASEMENT SHALL REMAIN IN A NATURAL UNDISTURBED STATE EXCEPT FOR THOSE ACTIVITIES REFERENCED IN THE DEED OF EASEMENT.
3. CONSERVATION EASEMENT SIGNS SHOULD MEET REQUIREMENTS AND GUIDELINES AS ESTABLISHED BY JCC ENGINEERING AND RESOURCE PROTECTION DIVISION
4. RPA, RPA BUFFER AND LIMITS OF WETLANDS SHOWN HEREON WERE TAKEN FROM APPROVED SITE PLAN.

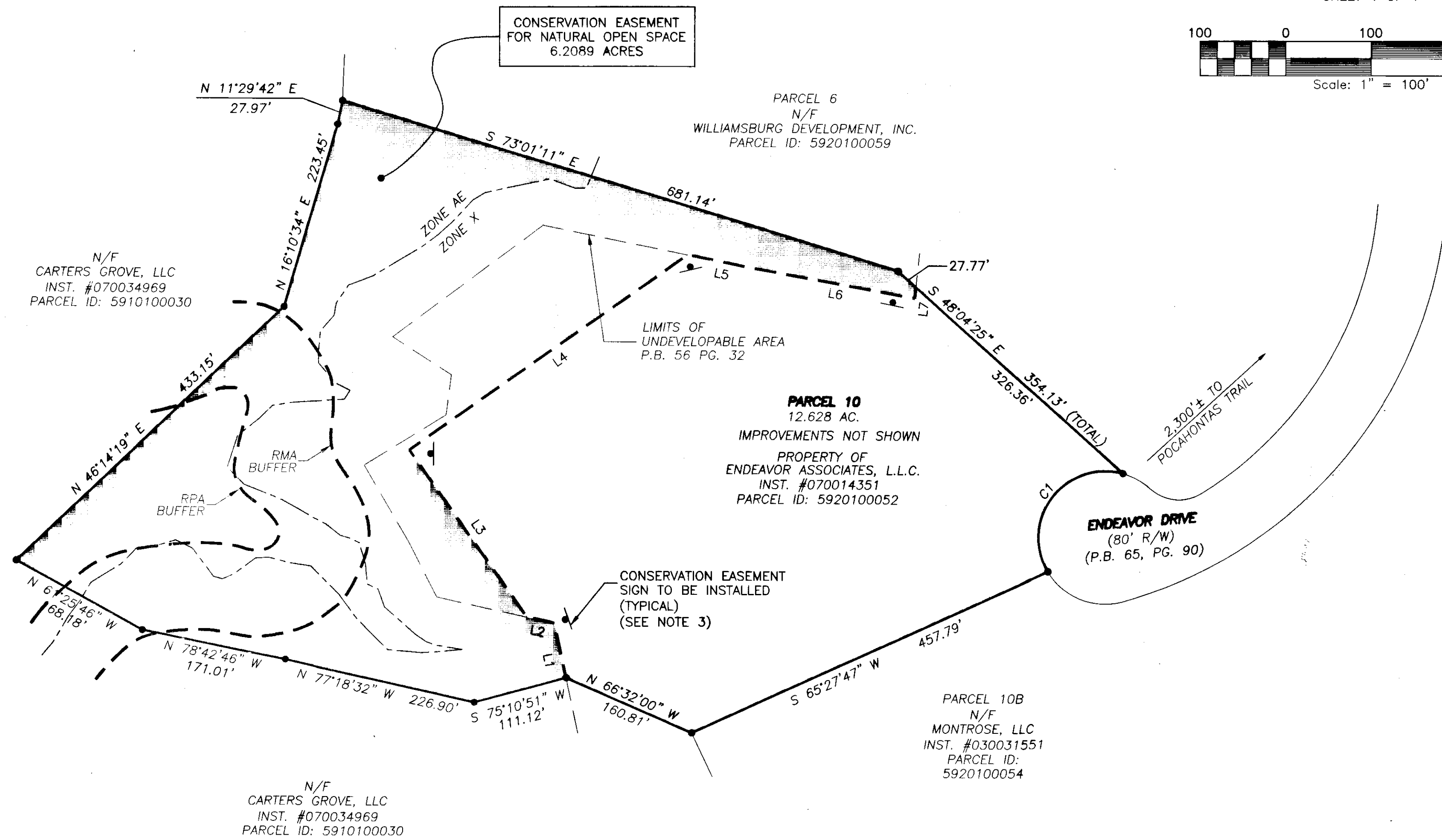
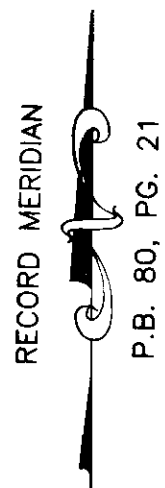
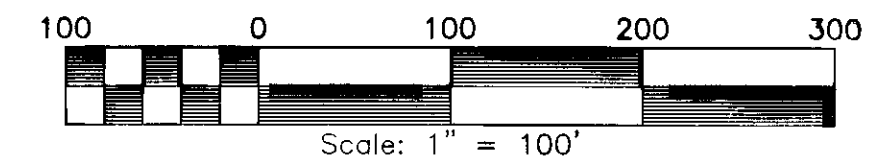
PLAT SHOWING
CONSERVATION EASEMENT
PARCEL 10
JAMES RIVER COMMERCE CENTER

JAMES CITY COUNTY BERKELEY DISTRICT VIRGINIA
 DATE: 11-12-2012 SCALE: 1"=100' JOB # 12-023



Surveying • Engineering • GPS
 205 Bulifants Boulevard, Suite E, Williamsburg, Virginia 23188
 Phone: (757) 565-1677 Fax: (757) 565-0782
 web: landtechresources.com

SHEET 1 OF 1



EASEMENT LINE TABLE		
LINE	BEARING	DISTANCE
L1	N 12°18'42" W	65.62'
L2	N 77°29'42" W	32.94'
L3	N 35°10'01" W	239.35'
L4	N 54°49'59" E	397.89'
L5	S 78°25'48" E	75.62'
L6	S 79°47'39" E	194.95'
L7	N 05°58'51" E	13.16'

PROPERTY LINE CURVE TABLE					
CURVE	RADIUS	ARC LENGTH	CHORD LENGTH	CHORD BEARING	DELTA ANGLE
C1	78.00'	185.34'	144.71'	S 37°10'13" W	136°08'25"

Large/Small Plat(s) Recorded
 herewith as # 120026325.



STATE OF VIRGINIA, JAMES CITY COUNTY

IN THE CLERKS OFFICE OF THE CIRCUIT COURT FOR THE COUNTY OF JAMES CITY THIS 21ST DAY OF December, 2012. THIS PLAT WAS PRESENTED AND ADMITTED TO RECORD AS THE LAW DIRECTS AT 9:50 A.M. INSTRUMENT # 120026325

TESTE Betty B. Woodruff, Clerk
By Claudia H. H. H. H., Deputy Clerk