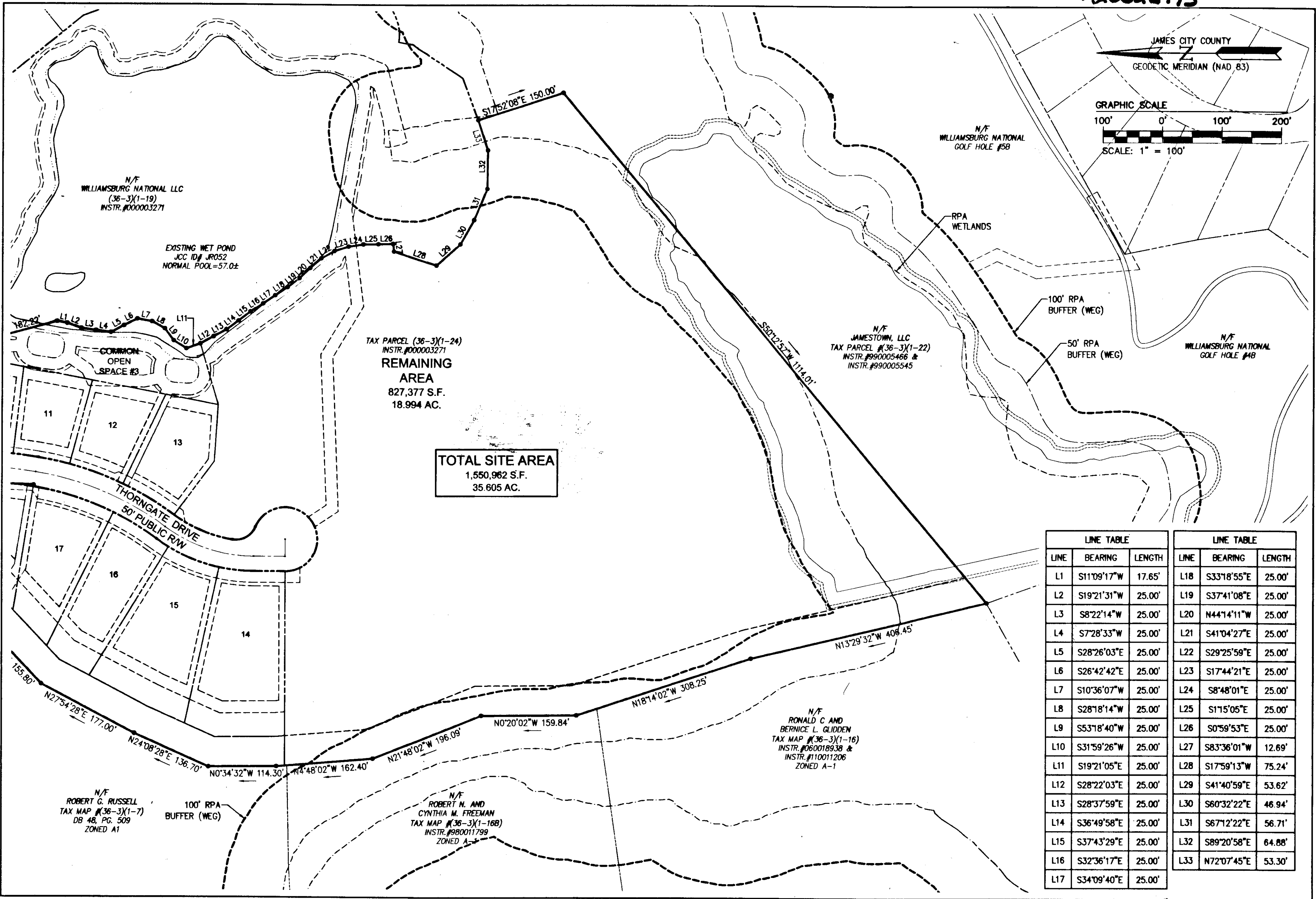
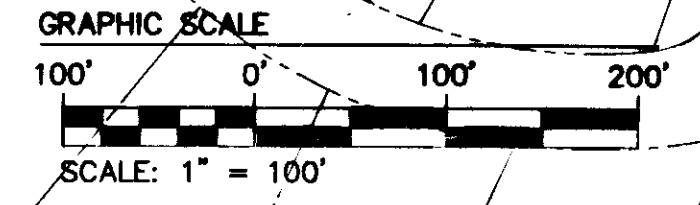
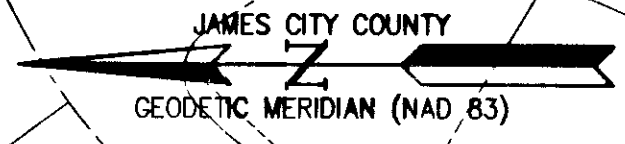
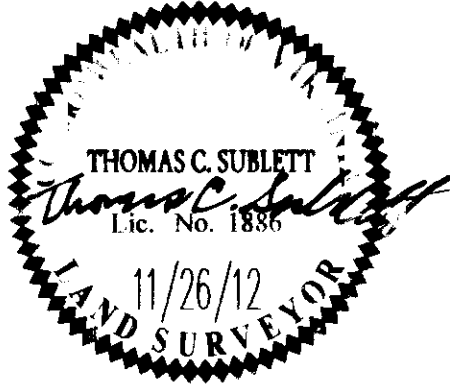


120026173



LINE TABLE			LINE TABLE		
LINE	BEARING	LENGTH	LINE	BEARING	LENGTH
L1	S11°09'17"W	17.65'	L18	S33°18'55"E	25.00'
L2	S19°21'31"W	25.00'	L19	S37°41'08"E	25.00'
L3	S8°22'14"W	25.00'	L20	N44°14'11"W	25.00'
L4	S7°28'33"W	25.00'	L21	S41°04'27"E	25.00'
L5	S28°26'03"E	25.00'	L22	S29°25'59"E	25.00'
L6	S26°42'42"E	25.00'	L23	S17°44'21"E	25.00'
L7	S10°36'07"W	25.00'	L24	S8°48'01"E	25.00'
L8	S28°18'14"W	25.00'	L25	S17°05'05"E	25.00'
L9	S53°18'40"W	25.00'	L26	S0°59'53"E	25.00'
L10	S31°59'26"W	25.00'	L27	S83°36'01"W	12.69'
L11	S19°21'05"E	25.00'	L28	S17°59'13"W	75.24'
L12	S28°22'03"E	25.00'	L29	S41°40'59"E	53.62'
L13	S28°37'59"E	25.00'	L30	S60°32'22"E	46.94'
L14	S36°49'58"E	25.00'	L31	S67°12'22"E	56.71'
L15	S37°43'29"E	25.00'	L32	S89°20'58"E	64.88'
L16	S32°36'17"E	25.00'	L33	N72°07'45"E	53.30'
L17	S34°09'40"E	25.00'			

City of Williamsburg & County of James City Circuit Court: This PLAT was recorded on <i>19 December 2012</i> at <i>11:13</i> AM/PM, PB PG Document # <i>120026173</i> BETSY B. WOOLRIDGE, CLERK <i>Betsy Woolridge</i> , Dep. Clerk		
1	11/26/2012	HWP
Rev	Date	Revised By



**NEES**  
CONSULTING ENGINEERS  
5246 Old Towne Road, Suite 1  
Williamsburg, Virginia 23188  
Phone: (757) 253-0040  
Fax: (757) 220-8994  
www.eesva.com  
Hampton Roads | Central Virginia | Middle Peninsula

**PLAT OF SUBDIVISION**  
**GREENSPRINGS WEST**  
PHASE VII-A  
OWNER: JAMESTOWN, L.L.C.  
JCC CASE NO.  
BERKELEY DISTRICT      JAMES CITY COUNTY      VIRGINIA

Project Contacts: TCS/RMS  
Project Number: 8656-24  
Scale: 1"=100'      Date: 9/14/12  
Sheet Number:  
**4 OF 4**