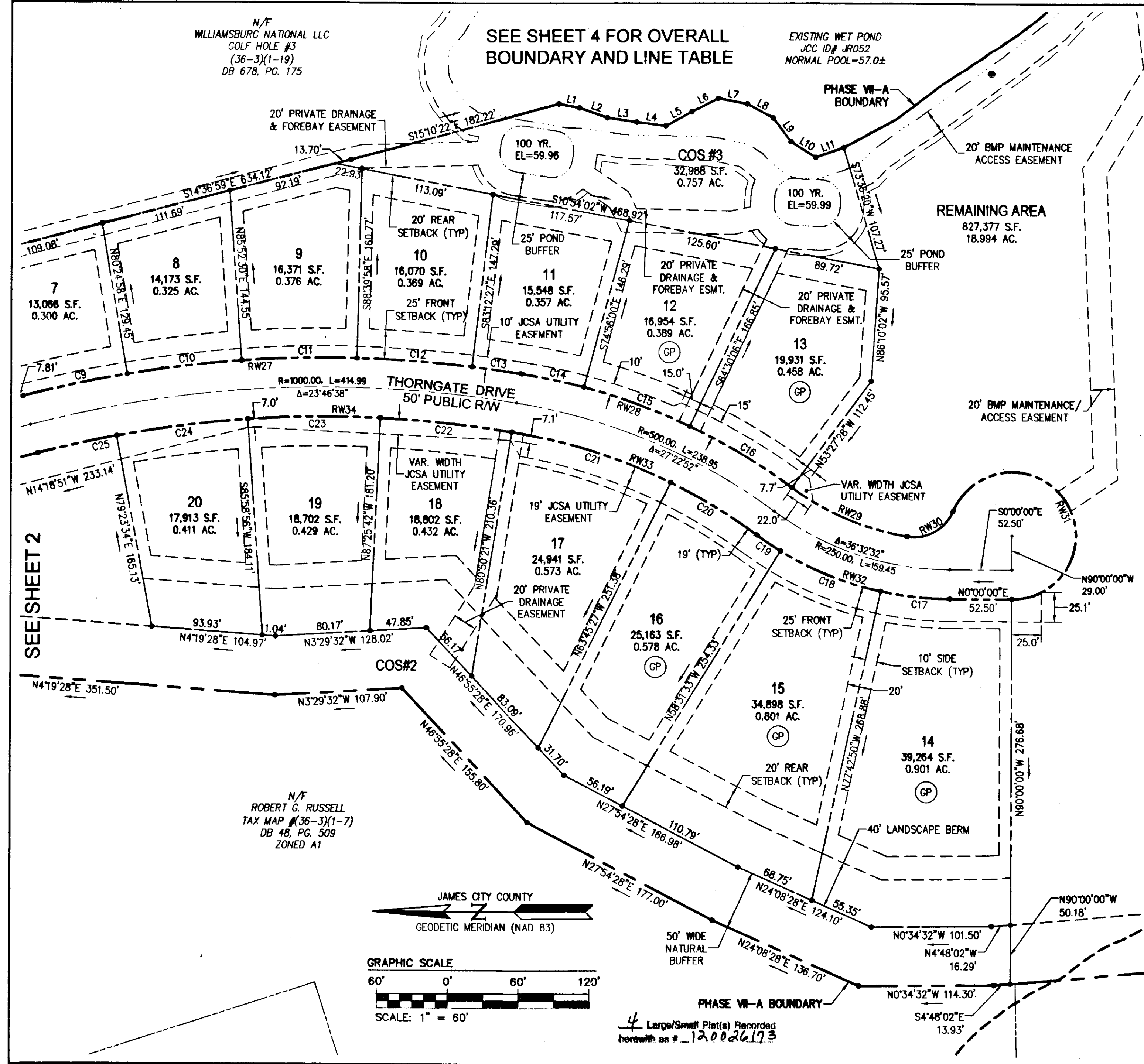


120026173



CURVE TABLE

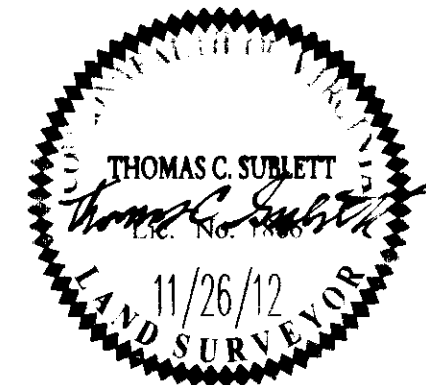
CURVE #	DELTA	RADIUS	LENGTH	TANGENT	CHORD	CHORD BEARING
C1	98°13'02"	175.00'	299.99'	202.09'	264.58'	S44°15'08"E
C2	93°21'39"	25.00'	40.74'	26.51'	36.38'	S46°40'49"W
C3	10°41'38"	525.00'	97.99'	49.14'	97.85'	S5°20'49"W
C4	4°49'53"	975.00'	82.21'	41.13'	82.19'	S8°16'42"W
C5	6°33'06"	975.00'	111.49'	55.81'	111.43'	S2°35'13"W
C6	6°33'06"	975.00'	111.49'	55.81'	111.43'	S3°57'53"E
C7	6°33'06"	975.00'	111.49'	55.81'	111.43'	S10°30'59"E
C8	0°49'27"	975.00'	14.02'	7.01'	14.02'	S14°12'16"E
C9	5°01'57"	1025.00'	90.03'	45.04'	90.00'	S12°06'00"E
C10	5°27'32"	1025.00'	97.66'	48.86'	97.62'	S6°51'16"E
C11	5°27'32"	1025.00'	97.66'	48.86'	97.62'	S1°23'44"E
C12	5°27'32"	1025.00'	97.66'	48.86'	97.62'	S4°03'47"W
C13	2°22'06"	1025.00'	42.37'	21.19'	42.37'	S7°58'36"W
C14	5°54'21"	525.00'	54.11'	27.08'	54.09'	S12°06'50"W
C15	10°25'55"	525.00'	95.59'	47.93'	95.45'	S20°16'57"W
C16	11°02'37"	525.00'	101.19'	50.75'	101.04'	S31°01'13"W
C17	12°17'10"	275.00'	58.97'	29.60'	58.86'	N6°08'35"E
C18	19°11'17"	275.00'	92.10'	46.48'	91.67'	N21°52'49"E
C19	5°04'05"	275.00'	24.32'	12.17'	24.32'	N34°00'29"E
C20	10°17'59"	475.00'	85.39'	42.81'	85.27'	N31°23'32"E
C21	17°04'54"	475.00'	141.61'	71.34'	141.09'	N17°42'06"E
C22	6°35'22"	975.00'	112.13'	56.13'	112.07'	N5°51'58"E
C23	6°35'22"	975.00'	112.13'	56.13'	112.07'	N0°43'23"W
C24	6°35'22"	975.00'	112.13'	56.13'	112.07'	N7°18'45"W
C25	4°00'33"	975.00'	68.23'	34.13'	68.21'	N12°36'42"W

CURVE TABLE

CURVE #	DELTA	RADIUS	LENGTH	TANGENT	CHORD	CHORD BEARING
RW26	25°18'37"	975.00'	430.71'	218.92'	427.21'	S1°57'41"E
RW27	23°46'38"	1025.00'	425.37'	215.79'	422.32'	S2°43'40"E
RW28	27°22'52"	525.00'	250.89'	127.89'	248.51'	S22°51'05"W
RW29	27°13'04"	225.00'	106.88'	54.47'	105.88'	S22°56'00"W
RW30	76°47'09"	36.00'	48.25'	28.53'	44.72'	S29°04'07"E
RW31	24°27'42"	54.00'	233.23'	80.88'	89.82'	S56°16'09"W
RW32	36°32'32"	275.00'	175.39'	90.79'	172.43'	N18°16'16"E
RW33	27°22'52"	475.00'	227.00'	115.71'	224.85'	N22°51'05"E
RW34	23°46'38"	975.00'	404.62'	205.26'	401.72'	N2°43'40"W
RW35	25°18'37"	1025.00'	452.79'	230.15'	449.12'	N1°57'41"W
RW36	10°41'38"	475.00'	88.66'	44.46'	88.53'	N5°20'49"E

City of Williamsburg & County of James City Circuit Court. This PLAT was recorded on 19 December 2012 at 11:13 AM/PM, PG. 120026173 Document # 120026173 BETSY B. WOOLRIDGE, CLERK By Thomas C. Sublett, Dep. Clerk

1	11/26/2012		HWP
Rev	Date	Description	Revised By



AES
CONSULTING ENGINEERS
Hampton Roads | Central Virginia | Middle Peninsula
5248 Olde Towne Road, Suite 1
Williamsburg, Virginia 23188
Phone: (757) 253-0040
Fax: (757) 220-8994
www.aesva.com

PLAT OF SUBDIVISION
GREENSPRINGS WEST
PHASE VII-A
OWNER: JAMESTOWN, L.L.C.
JCC CASE NO. _____
BERKELEY DISTRICT JAMES CITY COUNTY VIRGINIA

Project Contacts: TCS/RMS
Project Number: 8656-24
Scale: 1"=60' Date: 9/14/12
Sheet Number
3 OF 4