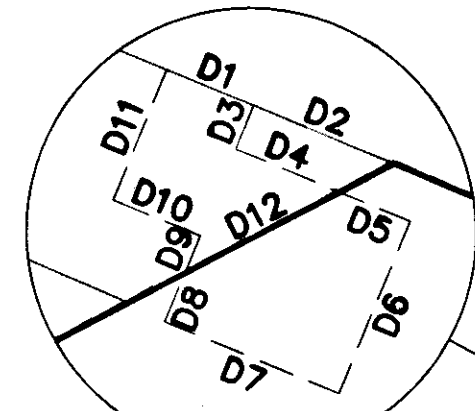
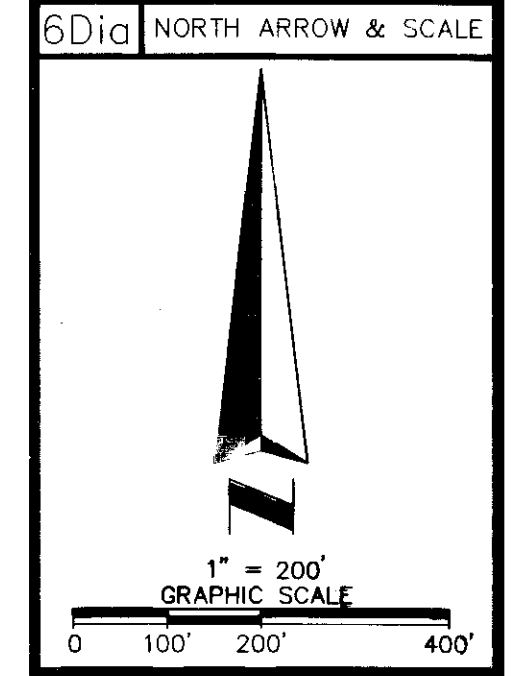


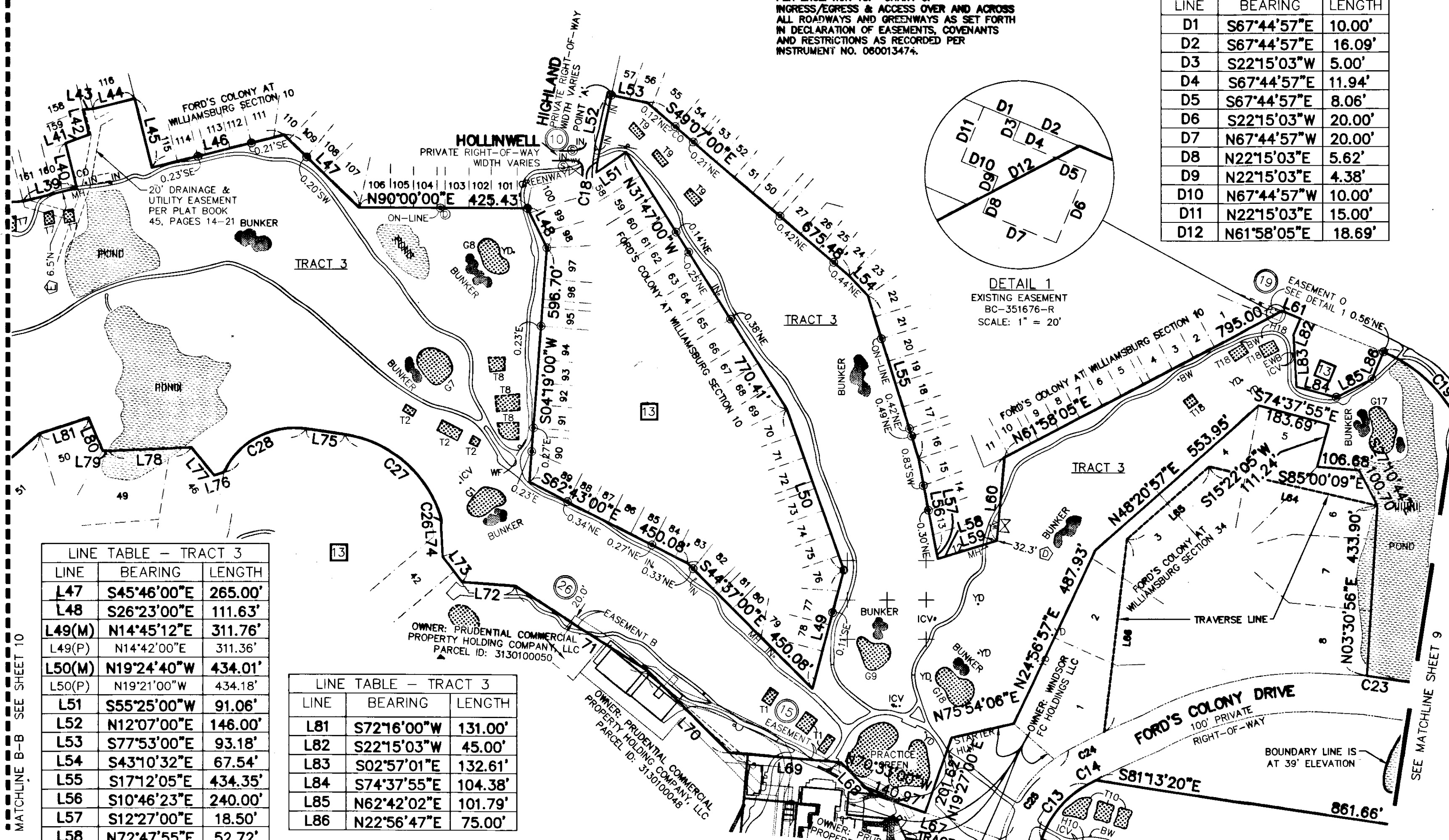
EASEMENT #5  
DRAINAGE EASEMENTS PER  
PLAT BOOK 31, PAGES 76-86

NOTE:  
PER EXCEPTION 10: GRANT OF  
INGRESS/EGRESS & ACCESS OVER AND ACROSS  
ALL ROADWAYS AND GREENWAYS AS SET FORTH  
IN DECLARATION OF EASEMENTS, COVENANTS  
AND RESTRICTIONS AS RECORDED PER  
INSTRUMENT NO. 060013474.

LINE	BEARING	LENGTH
D1	S67°44'57"E	10.00'
D2	S67°44'57"E	16.09'
D3	S22°15'03"W	5.00'
D4	S67°44'57"E	11.94'
D5	S67°44'57"E	8.06'
D6	S22°15'03"W	20.00'
D7	N67°44'57"W	20.00'
D8	N22°15'03"E	5.62'
D9	N22°15'03"E	4.38'
D10	N67°44'57"W	10.00'
D11	N22°15'03"E	15.00'
D12	N61°58'05"E	18.69'



DETAIL 1  
EXISTING EASEMENT  
BC-351676-R  
SCALE: 1" = 20'



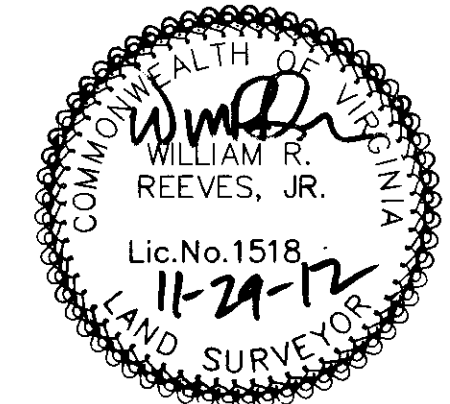
LINE	BEARING	LENGTH
L47	S45°46'00"E	265.00'
L48	S26°23'00"E	111.63'
L49(M)	N14°45'12"E	311.76'
L49(P)	N14°42'00"E	311.36'
L50(M)	N19°24'40"W	434.01'
L50(P)	N19°21'00"W	434.18'
L51	S55°25'00"W	91.06'
L52	N12°07'00"E	146.00'
L53	S77°53'00"E	93.18'
L54	S43°10'32"E	67.54'
L55	S17°12'05"E	434.35'
L56	S10°46'23"E	240.00'
L57	S12°27'00"E	18.50'
L58	N72°47'55"E	52.72'
L59	N72°47'55"E	103.36'
L60	N05°18'00"E	212.61'
L61	S67°44'57"E	50.00'
L62	N13°21'37"W	159.60'
L63	S06°31'28"E	102.38'
L64	N76°41'55"W	437.20'
L65	S48°20'57"W	278.37'
L66	S06°42'12"W	494.94'
L67	N70°33'00"W	342.93'
L68	N44°58'30"W	114.72'
L69	N84°53'00"W	282.49'
L70	N44°29'04"W	293.96'
L71	N57°18'29"W	398.06'
L72	N85°45'49"W	135.37'
L73	N37°36'00"W	80.63'
L74	N02°56'00"W	77.87'
L75	N81°35'00"W	98.47'
L76	S72°57'03"W	26.04'
L77	N39°09'00"W	90.44'
L78	S87°41'53"W	210.87'
L79	N87°18'21"W	13.82'
L80	N23°18'00"W	90.61'

LINE	BEARING	LENGTH
L81	S72°16'00"W	131.00'
L82	S22°15'03"W	45.00'
L83	S02°57'01"E	132.61'
L84	S74°37'55"E	104.38'
L85	N62°42'02"E	101.79'
L86	N22°56'47"E	75.00'

CURVE	RADIUS	LENGTH	TANGENT	CHORD	BEARING	DELTA
C10	1222.69'	234.31'	117.52'	233.95'	S45°48'53"W	10°58'48"
C11	54.68'	30.43'	15.62'	30.04'	N14°35'36"W	31°53'15"
C12	50.00'	45.69'	24.58'	44.12'	N24°49'38"W	52°21'16"
C13	250.00'	186.34'	97.74'	182.05'	N39°50'51"E	42°42'18"
C14	1727.39'	23.50'	11.75'	23.50'	N61°35'21"E	0°46'46"
C15	1365.89'	297.68'	149.43'	297.09'	N89°03'59"E	12°29'13"
C16	473.62'	72.55'	36.35'	72.48'	N78°26'05"E	8°46'35"
C17	1173.90'	261.00'	131.04'	260.46'	S11°43'20"W	12°44'20"
C18	378.26'	53.94'	27.02'	53.90'	N08°01'58"E	8°10'15"
C19	370.00'	346.74'	187.28'	334.19'	S40°12'24"E	53°41'36"
C20	2471.52'	294.87'	147.61'	294.70'	S09°56'31"E	6°50'09"
C21	40.00'	65.45'	42.71'	58.39'	S40°20'49"W	93°44'51"
C22	1265.88'	275.50'	138.29'	274.95'	N86°32'50"W	12°28'10"
C23	927.83'	45.51'	22.76'	45.51'	N81°42'35"W	2°48'38"
C24	1827.39'	101.34'	50.68'	101.33'	S62°47'18"W	3°10'39"
C25	350.00'	293.92'	156.25'	285.36'	S37°08'32"W	48°06'55"
C26	50.00'	25.71'	13.15'	25.43'	N02°56'00"W	29°28'00"
C27	300.00'	334.67'	187.16'	317.58'	N49°37'30"W	63°55'00"
C28	200.00'	252.81'	146.45'	236.31'	S62°12'14"W	72°25'32"

LINE	BEARING	LENGTH
L1	S08°23'56"E	213.87'
L2	S64°53'50"E	98.00'
L3	N41°20'52"E	226.51'
L4	N11°56'39"E	265.75'
L5	N33°41'24"W	126.19'
L6	N13°35'09"E	120.00'
L7	N04°43'17"W	123.78'
L8	N26°36'05"W	247.08'
L9	N61°22'00"W	133.72'
L10	N07°02'55"E	169.05'
L11	N17°47'14"W	234.15'
L12	N77°02'34"W	90.00'
L13	N03°29'16"W	89.61'
L14	S70°58'17"E	148.49'
L15	S45°25'58"E	130.91'

21 Large/Small Plat(s) Recorded  
herewith as # 120025060



DATE	REVISIONS	TECH	SCALE:
09/04/12	ADDED NEW TITLE	CD	1" = 200'

City of Williamsburg & County of James City  
Circuit Court: This PLAT was recorded on  
4 December 2012  
at 9:41 AM/PM, PG-  
Document # 120025060  
BETSY B. WOOLRIDGE, CLERK  
By *[Signature]*, Dep. Clerk

DRAWN BY/FIELD CREW: CD/PW/ML/W
APPROVED BY: JS
DRAWING FILE NAME: 1200743 240 FORT COLONY DR., WILLIAMSBURG, VA.DWG

6Dvi ALTA/ACSM LAND TITLE SURVEY  
OF  
TRACT 3 - MARSH HAWK  
18 HOLE GOLF COURSE  
JAMES CITY COUNTY WILLIAMSBURG, VA

**ASMA** AMERICAN SURVEYING & MAPPING INC.  
3191 MAGUIRE BLVD., SUITE 200  
PHONE (407) 426-7979  
ORLANDO, FLORIDA 32803  
WWW.ASMACORPORATE.COM