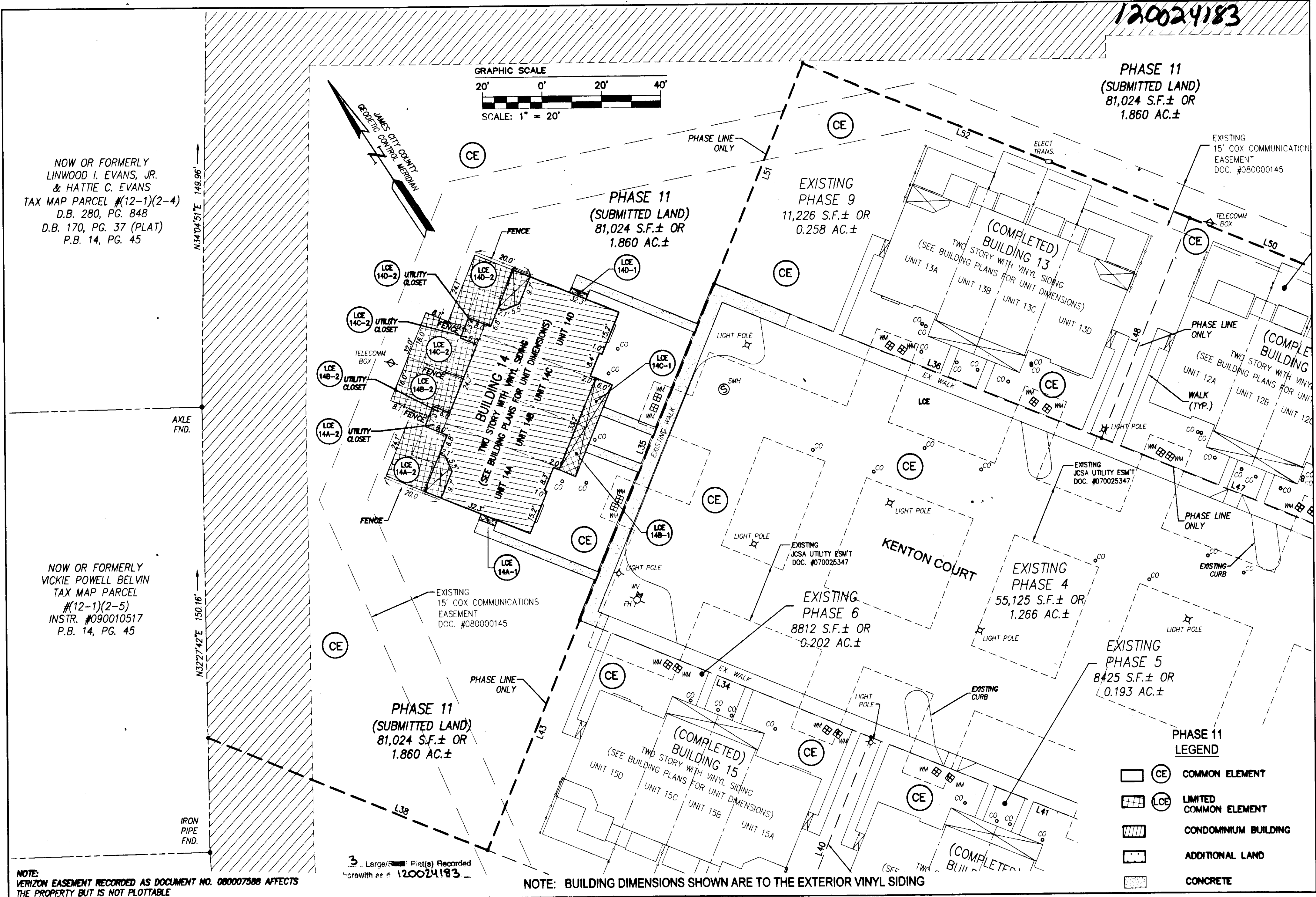


120024183



PHASE 11
(SUBMITTED LAND)
81,024 S.F.± OR
1.860 AC.±

PHASE 11
(SUBMITTED LAND)
81,024 S.F.± OR
1.860 AC.±

EXISTING
PHASE 9
11,226 S.F.± OR
0.258 AC.±

(COMPLETED)
BUILDING 13
(SEE BUILDING PLANS FOR UNIT DIMENSIONS)
UNIT 13A UNIT 13B UNIT 13C UNIT 13D

EXISTING
15' COX COMMUNICATION
EASEMENT
DOC. #080000145

(COMPLETED)
BUILDING
(SEE BUILDING PLANS FOR UNIT DIMENSIONS)
UNIT 12A UNIT 12B UNIT 12C

EXISTING
PHASE 4
55,125 S.F.± OR
1.266 AC.±

EXISTING
PHASE 6
8812 S.F.± OR
0.202 AC.±

EXISTING
PHASE 5
8425 S.F.± OR
0.193 AC.±

PHASE 11
(SUBMITTED LAND)
81,024 S.F.± OR
1.860 AC.±

PHASE 11
LEGEND

- COMMON ELEMENT
- LIMITED COMMON ELEMENT
- CONDOMINIUM BUILDING
- ADDITIONAL LAND
- CONCRETE

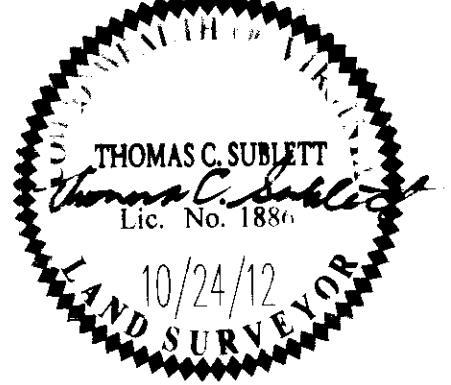
NOW OR FORMERLY
LINWOOD I. EVANS, JR.
& HATTIE C. EVANS
TAX MAP PARCEL #(12-1)(2-4)
D.B. 280, PG. 848
D.B. 170, PG. 37 (PLAT)
P.B. 14, PG. 45

NOW OR FORMERLY
VICKIE POWELL BELVIN
TAX MAP PARCEL
#(12-1)(2-5)
INSTR. #090010517
P.B. 14, PG. 45

NOTE:
VERIZON EASEMENT RECORDED AS DOCUMENT NO. 080007588 AFFECTS
THE PROPERTY BUT IS NOT PLOTTABLE

NOTE: BUILDING DIMENSIONS SHOWN ARE TO THE EXTERIOR VINYL SIDING

City of Williamsburg & County of James City Circuit Court: This PLAT was recorded on November 19, 2012 at 2:09 PM , PG. PG Document # 120024183 BETSY B. WOOLRIDGE, CLERK <i>Betsy Woolridge</i> , Dep. Clerk			
Rev.	Date	Description	Revised By



NES
CONSULTING ENGINEERS
5248 Old Towne Road, Suite 1
Williamsburg, Virginia 23188
Phone: (757) 253-0040
Fax: (757) 220-8994
www.nesva.com

**PLAT OF CONDOMINIUM
WEATHERLY AT WHITEHALL
PHASE 11**

STONEHOUSE DISTRICT JAMES CITY COUNTY VIRGINIA

Project Contacts:	JFS
Project Number:	9048-09
Scale:	1"=20'
Date:	10/24/12
Sheet Number	3 OF 3