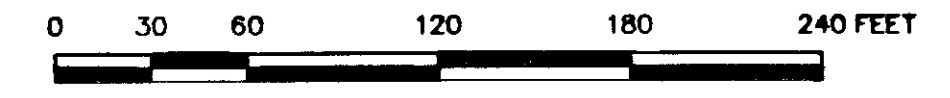
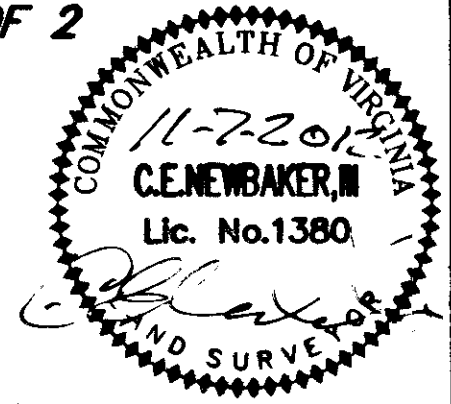


120024137

TOWNHOUSE PLAT  
LOTS 16-20  
*Michelle Point*  
STONEHOUSE DISTRICT - JAMES CITY COUNTY, VIRGINIA  
SCALE: 1" = 60' NOVEMBER 7, 2012

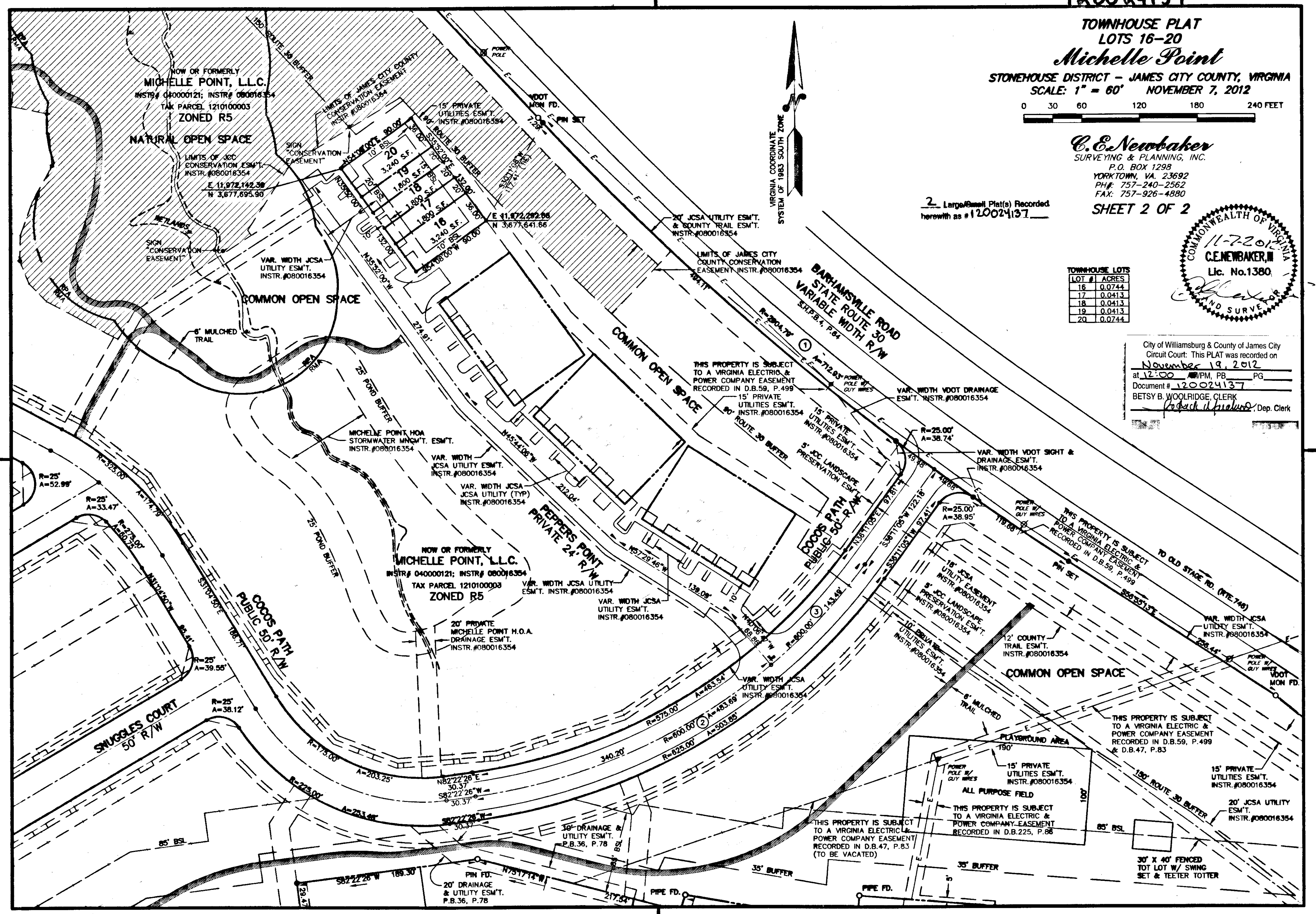


**C. E. Newbaker**  
SURVEYING & PLANNING, INC.  
P.O. BOX 1298  
YORKTOWN, VA. 23692  
PH: 757-240-2562  
FAX: 757-926-4880  
SHEET 2 OF 2



LOT #	ACRES
16	0.0744
17	0.0413
18	0.0413
19	0.0413
20	0.0744

City of Williamsburg & County of James City  
Circuit Court: This PLAT was recorded on  
November 19, 2012  
at 12:00 PM, PG \_\_\_\_\_  
Document # 120024137  
BETSY B. WOOLRIDGE, CLERK  
*Book it please*, Dep. Clerk



2 Large/Small Plat(s) Recorded  
herewith as #120024137