


SEE SHEET 11

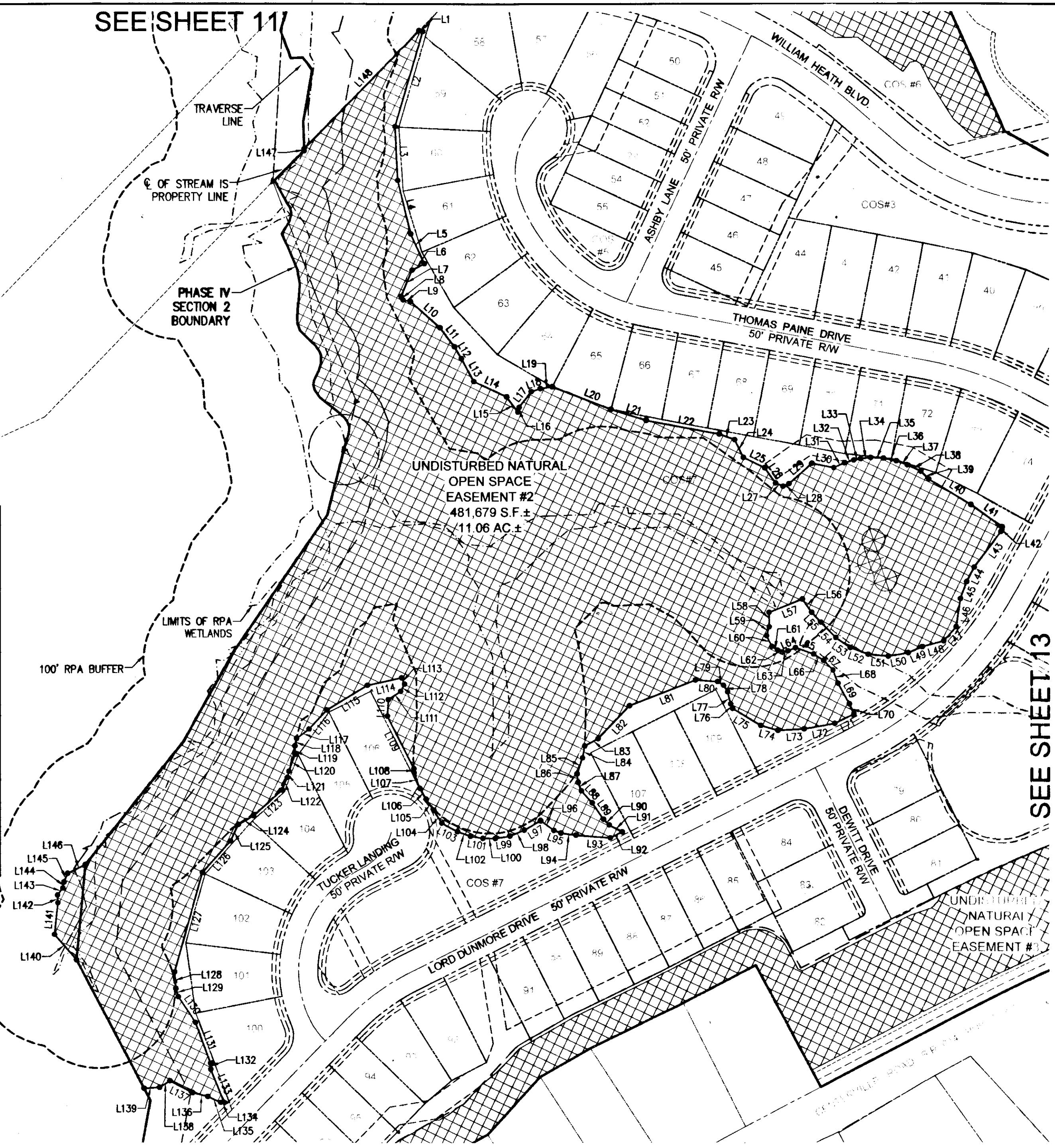
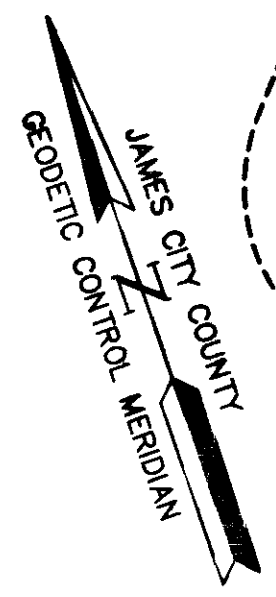
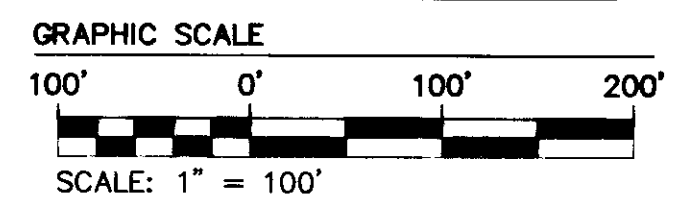
SEE SHEET 13

NATURAL OPEN SPACE EASEMENT #2

| LINE TABLE | | | LINE TABLE | | | LINE TABLE | | | LINE TABLE | | |
|------------|-------------|---------|------------|-------------|--------|------------|-------------|--------|------------|-------------|--------|
| LINE | BEARING | LENGTH | LINE | BEARING | LENGTH | LINE | BEARING | LENGTH | LINE | BEARING | LENGTH |
| L1 | N54°55'12"W | 4.80' | L20 | N49°48'47"W | 82.46' | L39 | S26°45'27"E | 14.94' | L58 | S18°20'56"W | 18.95' |
| L2 | N35°17'33"E | 129.39' | L21 | N53°18'56"W | 48.30' | L40 | S39°58'59"E | 63.97' | L59 | S35°27'04"W | 12.10' |
| L3 | N16°08'48"E | 70.38' | L22 | N60°19'21"W | 97.21' | L41 | S35°31'53"E | 50.26' | L60 | S7°38'06"E | 15.52' |
| L4 | N5°24'47"E | 72.04' | L23 | N50°27'45"W | 21.52' | L42 | S33°43'10"W | 6.49' | L61 | S35°49'52"E | 9.32' |
| L5 | N5°21'18"W | 42.79' | L24 | N7°08'18"W | 25.75' | L43 | S55°48'28"W | 58.46' | L62 | S49°25'35"E | 6.43' |
| L6 | N80°56'05"E | 18.15' | L25 | N45°08'03"W | 31.22' | L44 | S46°34'24"W | 21.24' | L63 | S84°17'17"E | 7.53' |
| L7 | N41°36'46"E | 37.24' | L26 | S16°08'00"E | 24.26' | L45 | S38°42'08"W | 23.54' | L64 | N85°57'38"E | 10.64' |
| L8 | N9°36'55"W | 5.28' | L27 | S46°35'38"E | 10.69' | L46 | S27°40'33"W | 37.49' | L65 | S51°36'15"E | 25.23' |
| L9 | N59°39'06"W | 9.90' | L28 | N84°46'42"E | 8.81' | L47 | S60°32'52"W | 24.56' | L66 | S39°08'00"E | 15.51' |
| L10 | N29°28'52"W | 51.77' | L29 | N67°27'40"E | 39.85' | L48 | N86°08'34"W | 29.05' | L67 | S25°19'59"E | 17.79' |
| L11 | N18°19'42"W | 30.78' | L30 | S59°37'21"E | 29.48' | L49 | S85°43'51"W | 20.00' | L68 | S2°06'13"E | 18.37' |
| L12 | N11°22'26"W | 18.08' | L31 | N84°31'32"E | 15.54' | L50 | N80°49'22"W | 26.55' | L69 | S9°40'02"E | 30.85' |
| L13 | N9°24'15"W | 34.20' | L32 | S87°35'25"E | 12.56' | L51 | N65°31'24"W | 26.38' | L70 | S5°25'03"E | 14.60' |
| L14 | N46°00'30"W | 47.16' | L33 | S81°50'43"E | 9.18' | L52 | N50°41'03"W | 24.97' | L71 | S82°36'01"W | 28.06' |
| L15 | N17°21'05"W | 25.07' | L34 | S77°53'57"E | 13.09' | L53 | N36°58'46"W | 23.23' | L72 | N81°07'57"W | 40.86' |
| L16 | S34°55'29"W | 6.29' | L35 | S68°09'26"E | 16.82' | L54 | N25°15'38"W | 28.39' | L73 | N74°05'22"W | 34.37' |
| L17 | S56°29'44"W | 26.02' | L36 | S59°25'38"E | 17.12' | L55 | N23°52'19"W | 17.40' | L74 | N54°45'32"W | 23.37' |
| L18 | N89°51'23"W | 12.29' | L37 | S50°59'57"E | 15.28' | L56 | N15°53'50"W | 21.27' | L75 | N39°53'40"W | 43.08' |
| L19 | N79°23'58"W | 15.55' | L38 | S45°27'27"E | 19.50' | L57 | S87°17'05"W | 46.83' | L76 | N3°49'20"W | 6.71' |

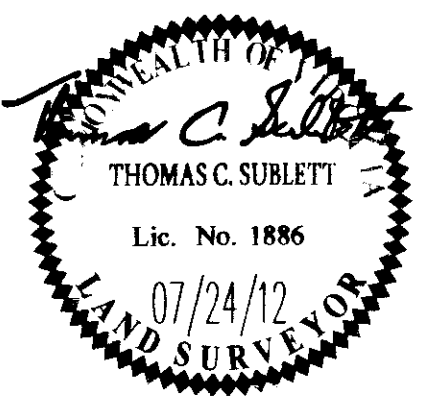
| LINE TABLE | | | LINE TABLE | | | LINE TABLE | | | LINE TABLE | | |
|------------|-------------|--------|------------|-------------|--------|------------|-------------|---------|------------|-------------|---------|
| LINE | BEARING | LENGTH | LINE | BEARING | LENGTH | LINE | BEARING | LENGTH | LINE | BEARING | LENGTH |
| L77 | N4°31'00"E | 16.55' | L96 | N34°12'20"W | 21.39' | L115 | S77°26'11"W | 62.15' | L134 | N67°20'18"W | 5.14' |
| L78 | N13°19'50"W | 10.27' | L97 | S78°19'23"W | 24.83' | L116 | S61°41'13"W | 34.14' | L135 | N45°30'00"W | 18.58' |
| L79 | N39°20'46"W | 8.91' | L98 | S87°54'27"W | 19.90' | L117 | S71°55'09"W | 20.32' | L136 | N56°48'14"W | 20.36' |
| L80 | N66°35'54"W | 28.88' | L99 | N79°52'36"W | 19.46' | L118 | S32°18'50"W | 10.00' | L137 | N43°19'25"W | 33.95' |
| L81 | S87°41'09"W | 92.54' | L100 | N70°25'04"W | 16.23' | L119 | S18°13'24"W | 11.23' | L138 | S75°43'18"W | 16.07' |
| L82 | S62°39'46"W | 59.50' | L101 | N61°40'52"W | 16.51' | L120 | S38°54'47"W | 23.49' | L139 | N74°03'34"W | 20.40' |
| L83 | S80°42'35"W | 19.99' | L102 | N51°29'48"W | 18.01' | L121 | S32°32'23"W | 8.19' | L140 | S21°41'42"E | 43.83' |
| L84 | S28°58'33"W | 15.98' | L103 | N42°34'08"W | 23.33' | L122 | S42°11'08"W | 18.14' | L141 | S25°01'22"W | 41.55' |
| L85 | S38°11'19"W | 21.99' | L104 | N13°05'05"W | 19.56' | L123 | S67°02'28"W | 50.17' | L142 | S15°57'42"W | 10.13' |
| L86 | S12°08'49"W | 11.25' | L105 | N15°25'25"W | 17.83' | L124 | S78°46'58"W | 22.67' | L143 | S56°20'04"W | 11.47' |
| L87 | S2°24'49"E | 12.01' | L106 | N10°48'09"W | 16.22' | L125 | S44°21'52"W | 23.91' | L144 | S30°59'26"W | 8.11' |
| L88 | S22°57'21"E | 21.11' | L107 | N1°31'07"W | 21.56' | L126 | S60°45'38"W | 55.48' | L145 | S41°02'09"W | 12.12' |
| L89 | S15°33'04"E | 25.95' | L108 | N16°25'04"E | 5.59' | L127 | S34°49'50"W | 135.05' | L146 | S82°45'22"W | 25.90' |
| L90 | S26°27'59"E | 10.82' | L109 | N7°45'50"W | 76.92' | L128 | S14°14'24"W | 21.57' | L147 | S17°11'56"W | 2.49' |
| L91 | S42°33'21"E | 19.20' | L110 | N22°19'39"E | 21.71' | L129 | S2°33'22"W | 11.39' | L148 | S63°06'28"W | 216.32' |
| L92 | S83°08'44"W | 17.40' | L111 | N74°39'53"E | 19.50' | L130 | S14°47'51"E | 40.84' | | | |
| L93 | N66°40'56"W | 44.99' | L112 | N46°43'56"E | 10.90' | L131 | S11°4'28"E | 56.60' | | | |
| L94 | N62°30'59"W | 19.83' | L113 | N6°44'51"W | 8.93' | L132 | S16°48'50"W | 8.15' | | | |
| L95 | N50°53'42"W | 9.88' | L114 | N83°36'10"W | 45.95' | L133 | S3°15'26"E | 47.47' | | | |

LEGEND:

 UNDISTURBED NATURAL OPEN SPACE EASEMENT AND CONSERVATION AREA



| | | | |
|-----|----------|-----------------------------|------------|
| 1 | 07/24/12 | REVISED PER COUNTY COMMENTS | AMS |
| Rev | Date | Description | Revised By |

City of Williamsburg & County of James City
 Circuit Court: This PLAT was recorded on
November 16, 2012
 at 3:11 PM, PG
 Document # **120024099**
 BETSY B. WOOLRIDGE, CLERK
 Patrick Hurlburt, Dep. Clerk



13 Large format plat recorded with 120024099

NES
 CONSULTING ENGINEERS
 Hampton Roads | Central Virginia | Middle Peninsula
 5248 Old Towne Road, Suite 1
 Williamsburg, Virginia 23186
 Phone: (757) 253-0040
 Fax: (757) 220-8994
 www.nesva.com

PLAT OF SUBDIVISION
COLONIAL HERITAGE
 PHASE IV, SECTION 2A
 LOTS 1 THRU 109 AND
 COMMON OPEN SPACES #1 THRU #7
 PREPARED FOR COLONIAL HERITAGE LLC
 STONEHOUSE DISTRICT JAMES CITY COUNTY VIRGINIA

Project Contacts: TCS
 Project Number: 8881-42A
 Scale: 1"=100'
 Date: 06/22/12
 Sheet Number
12 of 13