

120024099

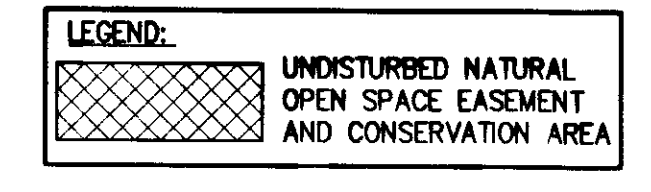
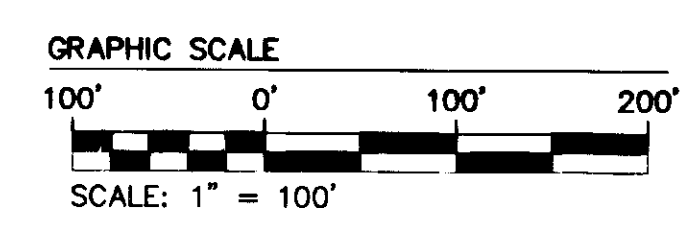
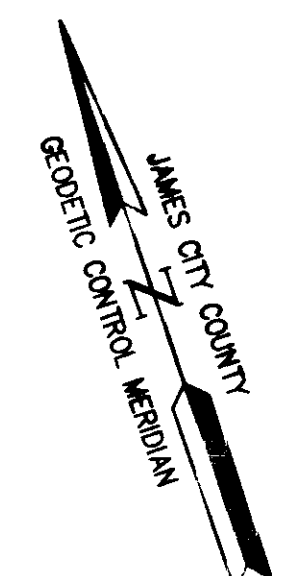
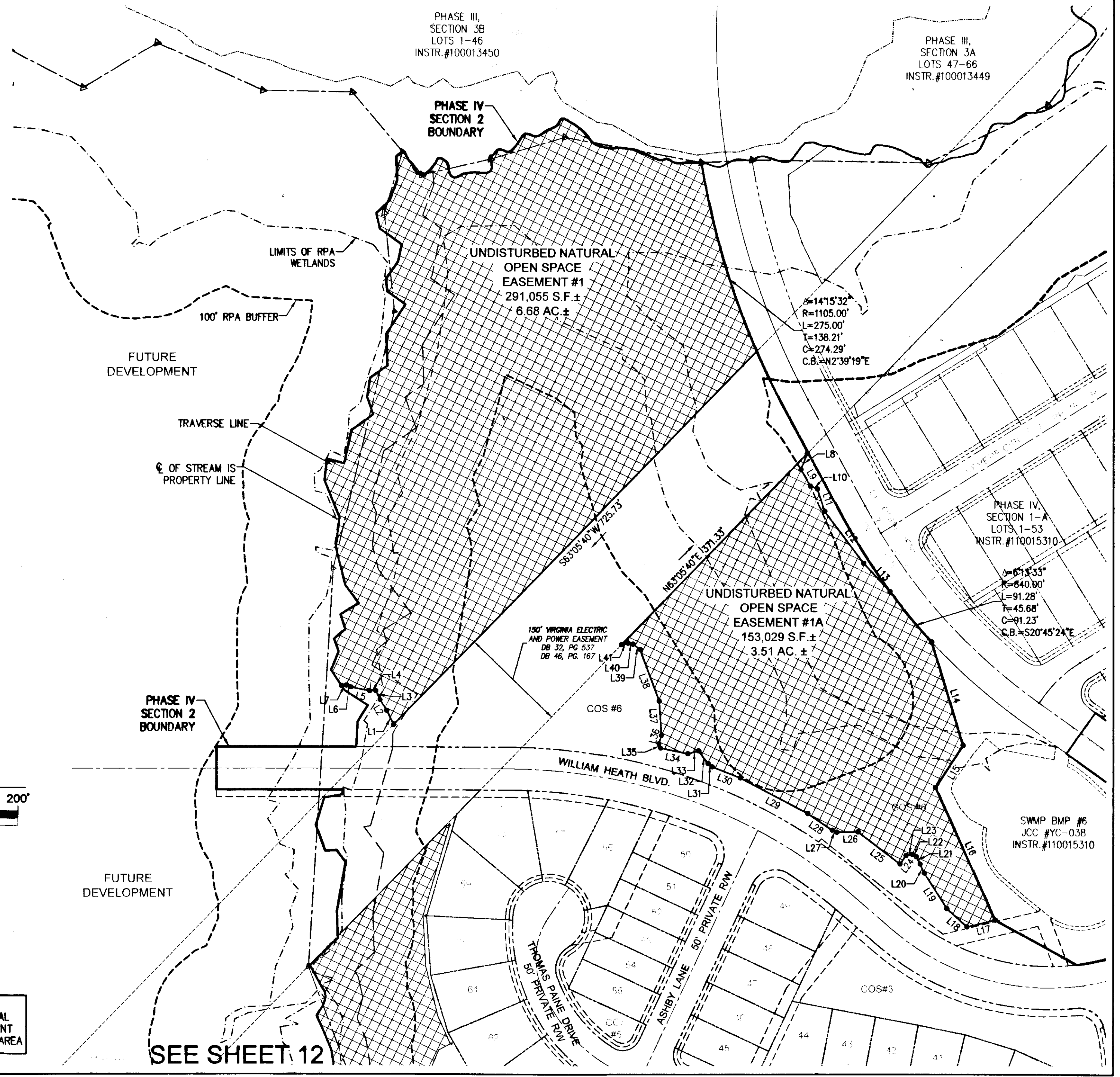
NATURAL OPEN SPACE EASEMENT #1

LINE	BEARING	LENGTH
L1	S7°00'52"E	21.86'
L2	S12°44'55"E	17.80'
L3	S6°28'42"E	13.92'
L4	S74°38'05"E	8.56'
L5	S59°13'59"E	26.54'
L6	S49°09'33"E	6.62'
L7	S75°14'39"E	7.06'

NATURAL OPEN SPACE EASEMENT #1A

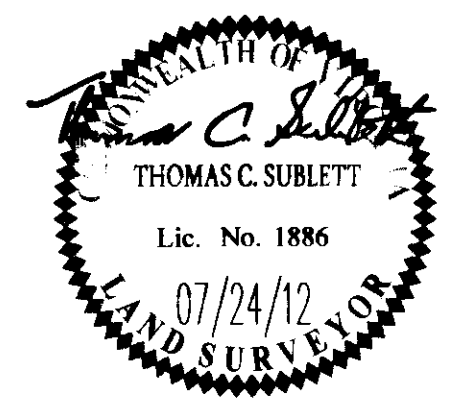
LINE	BEARING	LENGTH
L8	S39°57'46"W	24.06'
L9	S10°39'52"E	26.21'
L10	S47°57'55"E	10.81'
L11	S11°1'33"W	33.15'
L12	S18°00'36"E	90.67'
L13	S23°54'21"E	53.72'
L14	N2°06'26"E	150.79'
L15	N51°54'53"E	70.27'
L16	N5°17'15"W	202.66'
L17	S84°33'31"E	40.51'
L18	N28°42'57"W	37.84'
L19	N13°25'13"W	58.61'
L20	N5°55'55"W	14.03'
L21	N9°16'51"W	11.58'
L22	N41°25'34"W	6.50'
L23	N82°35'24"W	8.27'
L24	S56°31'52"W	15.07'

LINE	BEARING	LENGTH
L25	N33°41'42"W	73.72'
L26	N71°55'01"W	29.38'
L27	S45°48'00"E	7.09'
L28	N36°41'03"W	41.39'
L29	N43°06'07"W	106.48'
L30	N49°27'12"W	42.08'
L31	N32°55'29"W	7.40'
L32	N17°17'09"W	22.15'
L33	N86°09'19"W	15.43'
L34	N59°27'28"W	38.99'
L35	N0°40'20"E	6.56'
L36	N36°07'40"E	11.86'
L37	N15°12'12"E	48.32'
L38	N1°27'08"W	76.69'
L39	N33°41'08"W	12.22'
L40	N59°38'22"W	7.02'
L41	N84°18'00"W	9.39'



SEE SHEET 12

City of Williamsburg & County of James City		Circuit Court: This PLAT was recorded on	
		November 16, 2012	
at 3:11 PM, PG			
Document # 120024099			
BETSY B. WOOLRIDGE, CLERK			
Patrick Williams, Dep. Clerk			
1	07/24/12	REVISED PER COUNTY COMMENTS	NRMS
Rev	Date	Description	Revised By



13 Large/Small Plat(s) Recorded  
with serial 120024099

**NES**  
CONSULTING ENGINEERS

5248 Olde Towne Road, Suite 1  
Williamsburg, Virginia 23188  
Phone: (757) 253-0040  
Fax: (757) 220-8994  
www.aesva.com

Hampton Roads | Central Virginia | Middle Peninsula

PLAT OF SUBDIVISION  
**COLONIAL HERITAGE**  
PHASE IV, SECTION 2A  
LOTS 1 THRU 109 AND  
COMMON OPEN SPACES #1 THRU #7  
PREPARED FOR COLONIAL HERITAGE LLC

STONEHOUSE DISTRICT JAMES CITY COUNTY VIRGINIA

Project Contacts:	TCS
Project Number:	8881-42A
Scale:	1"=100'
Date:	06/22/12
Sheet Number	11 of 13