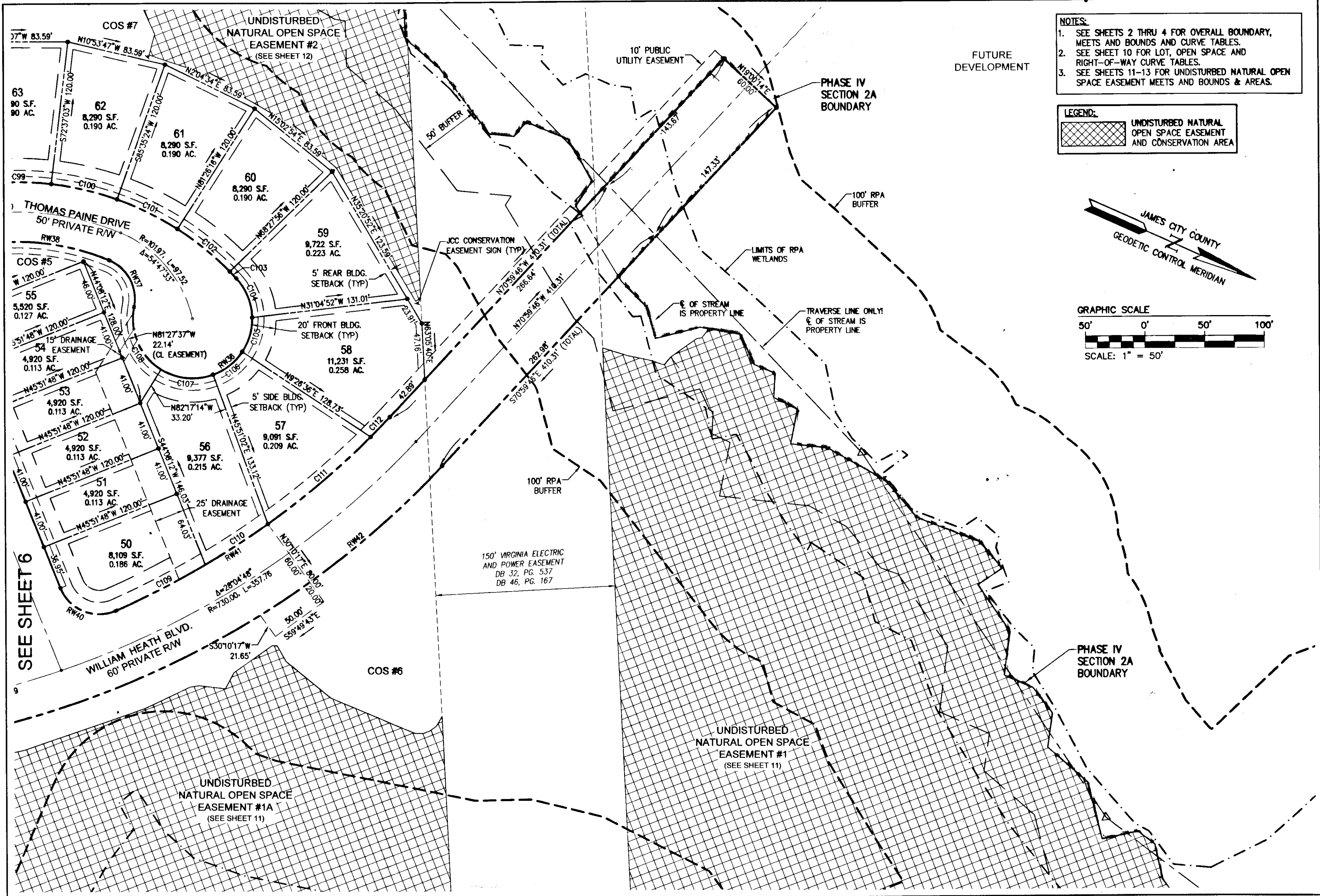


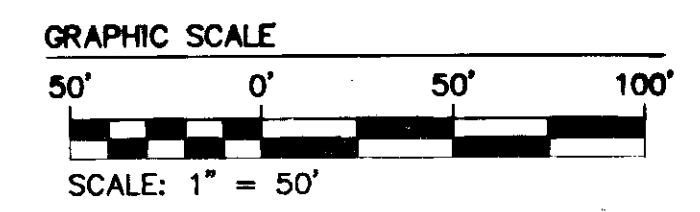
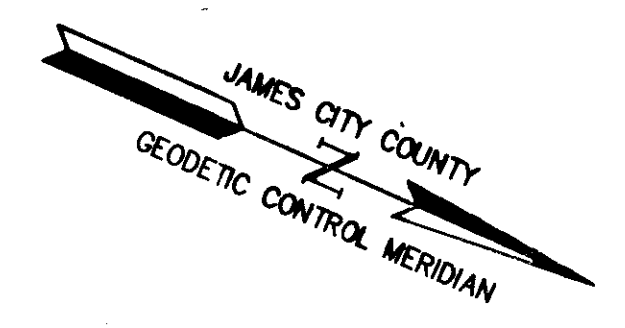
120024099



NOTES:
 1. SEE SHEETS 2 THRU 4 FOR OVERALL BOUNDARY, MEETS AND BOUNDS AND CURVE TABLES.
 2. SEE SHEET 10 FOR LOT, OPEN SPACE AND RIGHT-OF-WAY CURVE TABLES.
 3. SEE SHEETS 11-13 FOR UNDISTURBED NATURAL OPEN SPACE EASEMENT MEETS AND BOUNDS & AREAS.

LEGEND:

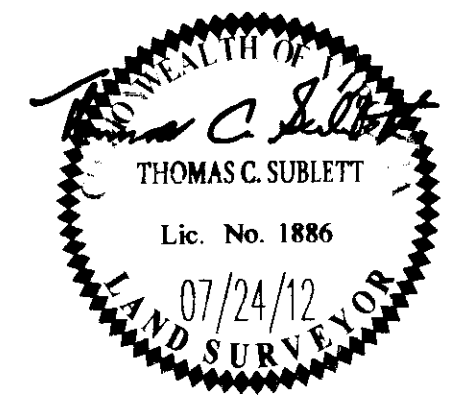
 UNDISTURBED NATURAL OPEN SPACE EASEMENT AND CONSERVATION AREA



SEE SHEET 6

1	07/24/12	REVISED PER COUNTY COMMENTS	REB
Rev	Date	Description	Revised By

City of Williamsburg & County of James City
 Circuit Court: This PLAT was recorded on
November 16, 2012
 at 3:11 PM, PG. PG
 Document # 120024099
 BETSY B. WOOLRIDGE, CLERK
Patrick Williams Dep. Clerk



13 Larger email Plat(s) Recorded herewith as # 120024099

NES
 CONSULTING ENGINEERS
 Hampton Roads | Central Virginia | Middle Peninsula

5248 Old Towne Road, Suite 1
 Williamsburg, Virginia 23188
 Phone: (757) 253-0040
 Fax: (757) 220-8994
 www.aesva.com

**PLAT OF SUBDIVISION
 COLONIAL HERITAGE
 PHASE IV, SECTION 2A
 LOTS 1 THRU 109 AND
 COMMON OPEN SPACES #1 THRU #7
 PREPARED FOR COLONIAL HERITAGE LLC**

STONEHOUSE DISTRICT JAMES CITY COUNTY VIRGINIA

Project Contacts: TCS	
Project Number: 8881-42A	
Scale: 1"=50'	Date: 06/22/12
Sheet Number	
7 of 13	