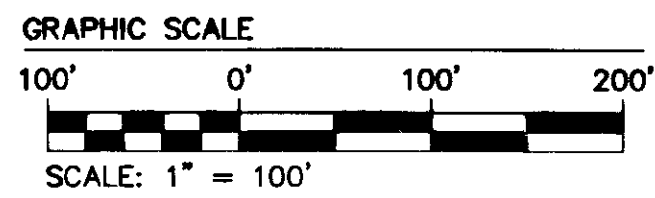


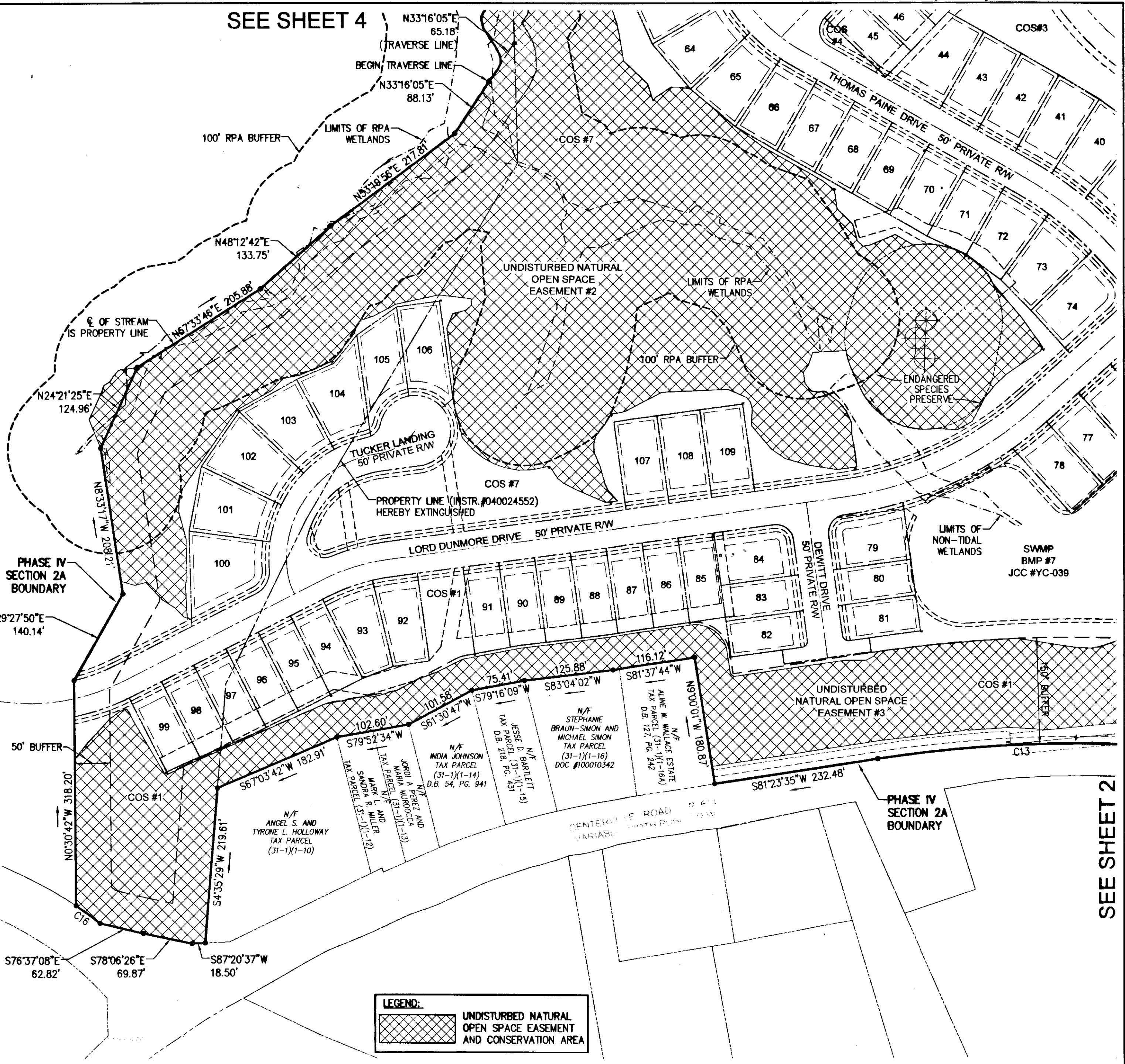
120024099

SEE SHEET 4




FUTURE DEVELOPMENT

REMAINDER TAX MAP PARCEL # (22-4)(1-7) COLONIAL HERITAGE LLC INSTR. #040024552



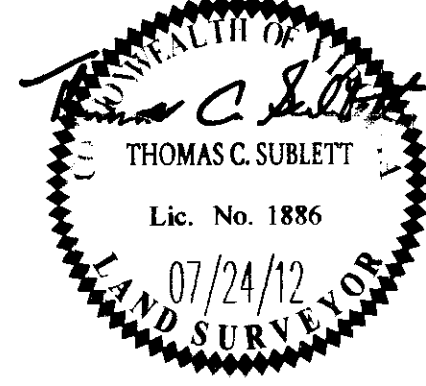
LEGEND:

 UNDISTURBED NATURAL OPEN SPACE EASEMENT AND CONSERVATION AREA

SEE SHEET 2

1	07/24/12	REVISED PER COUNTY COMMENTS	Revised By
Rev	Date	Description	Revised By

City of Williamsburg & County of James City
 Circuit Court: This PLAT was recorded on
November 16, 2012
 at 3:11 PM, PB PG
 Document # **120024099**
 BETSY B. WOOLRIDGE, CLERK
Betsy Woolridge, Dep. Clerk



AES
 CONSULTING ENGINEERS
 Hampton Roads | Central Virginia | Middle Peninsula
 5248 Olde Towne Road, Suite 1
 Williamsburg, Virginia 23188
 Phone: (757) 253-0040
 Fax: (757) 220-8994
 www.aesva.com

13 Large/Small Plat(s) Recorded
 Herewith as # 120024099

**PLAT OF SUBDIVISION
 COLONIAL HERITAGE
 PHASE IV, SECTION 2A
 LOTS 1 THRU 109 AND
 COMMON OPEN SPACES #1 THRU #7
 PREPARED FOR COLONIAL HERITAGE LLC**
 STONEHOUSE DISTRICT JAMES CITY COUNTY VIRGINIA

Project Contacts:	TCS
Project Number:	8881-42A
Scale:	1"=100'
Date:	08/22/12
Sheet Number	3 of 13