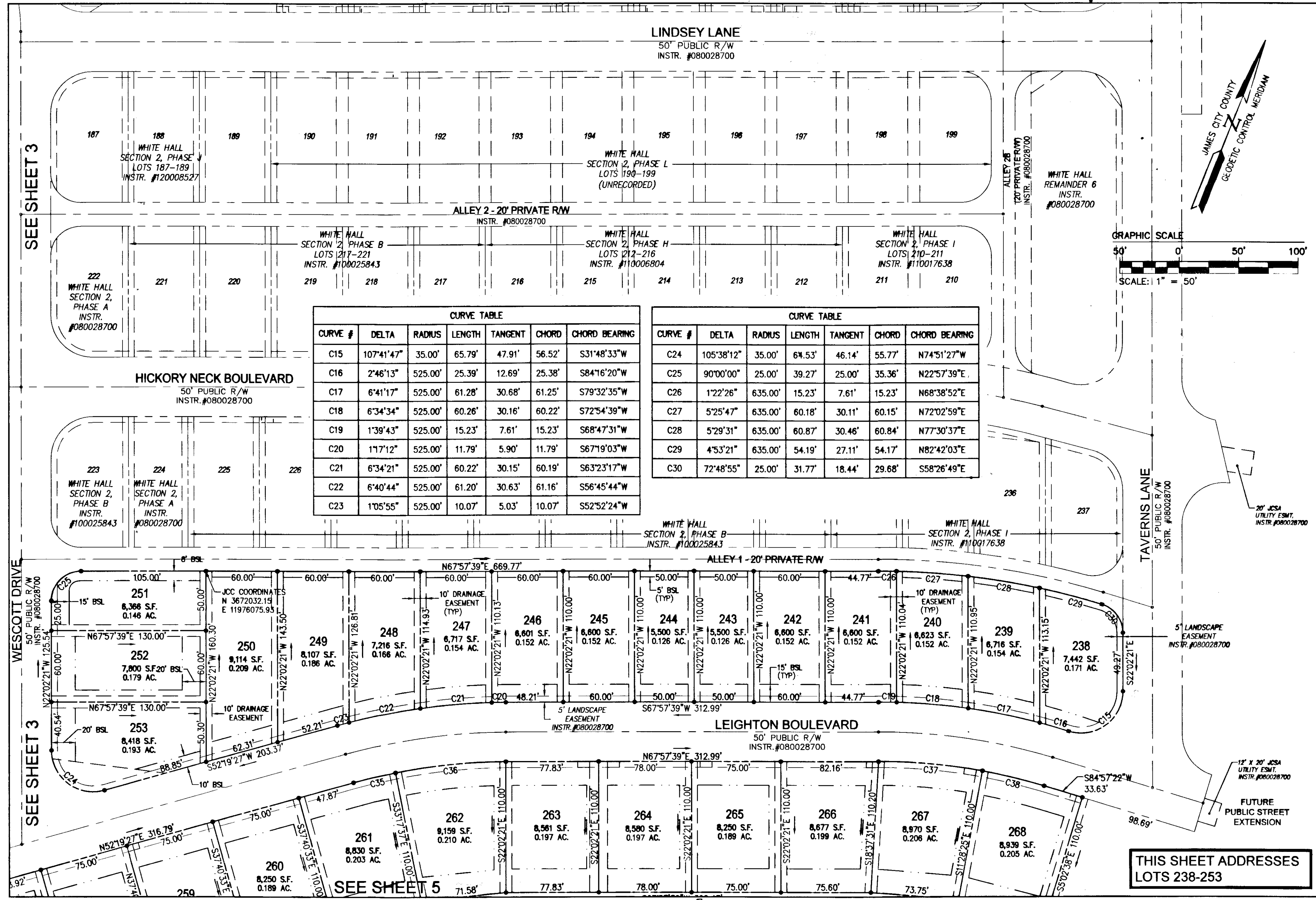
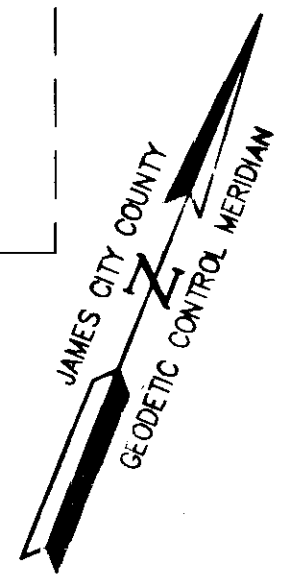
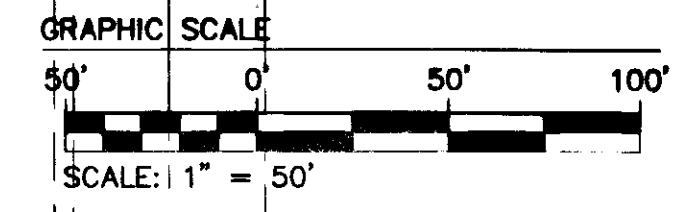


120024072



CURVE TABLE						
CURVE #	DELTA	RADIUS	LENGTH	TANGENT	CHORD	CHORD BEARING
C15	107°41'47"	35.00'	65.79'	47.91'	56.52'	S31°48'33"W
C16	2°46'13"	525.00'	25.39'	12.69'	25.38'	S84°16'20"W
C17	6°41'17"	525.00'	61.28'	30.68'	61.25'	S79°32'35"W
C18	6°34'34"	525.00'	60.26'	30.16'	60.22'	S72°54'39"W
C19	1°39'43"	525.00'	15.23'	7.61'	15.23'	S68°47'31"W
C20	1°17'12"	525.00'	11.79'	5.90'	11.79'	S67°19'03"W
C21	6°34'21"	525.00'	60.22'	30.15'	60.19'	S63°23'17"W
C22	6°40'44"	525.00'	61.20'	30.63'	61.16'	S56°45'44"W
C23	1°05'55"	525.00'	10.07'	5.03'	10.07'	S52°52'24"W

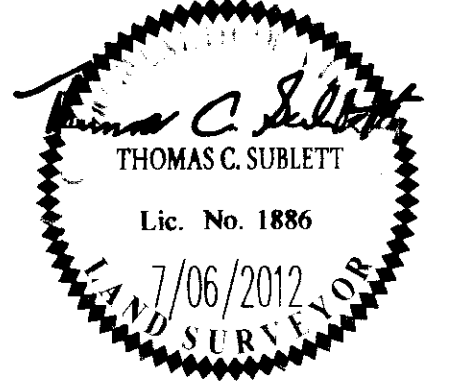
CURVE TABLE						
CURVE #	DELTA	RADIUS	LENGTH	TANGENT	CHORD	CHORD BEARING
C24	105°38'12"	35.00'	64.53'	46.14'	55.77'	N74°51'27"W
C25	90°00'00"	25.00'	39.27'	25.00'	35.36'	N22°57'39"E
C26	1°22'26"	635.00'	15.23'	7.61'	15.23'	N68°38'52"E
C27	5°25'47"	635.00'	60.18'	30.11'	60.15'	N72°02'59"E
C28	5°29'31"	635.00'	60.87'	30.46'	60.84'	N77°30'37"E
C29	4°53'21"	635.00'	54.19'	27.11'	54.17'	N82°42'03"E
C30	72°48'55"	25.00'	31.77'	18.44'	29.68'	S58°26'49"E



SEE SHEET 3

Rev	Date	Description	Revised By
1	07/08/12	REVISED PER JCC & VDOT COMMENTS	

City of Williamsburg & County of James City
 Circuit Court: This PLAT was recorded on
November 16, 2012
 at 2:20 PM, PG
 Document # **120024072**
 BETSY B. WOOLRIDGE, CLERK
Paula Upshaw, Dep. Clerk



NES
 CONSULTING ENGINEERS
 Hampton Roads | Central Virginia | Middle Peninsula
 5248 Old Towne Road, Suite 1
 Williamsburg, Virginia 23188
 Phone: (757) 253-0040
 Fax: (757) 220-8994
 www.aesva.com

**PLAT OF SUBDIVISION OF
 REMAINDERS 8, 9, 10 & 14**
WHITE HALL
 SECTION 2, PHASE K
 OWNER: RAUCH DEVELOPMENT CO., L.L.C.
 JCC CASE NO. S-0020-2012
 STONEHOUSE DISTRICT | JAMES CITY COUNTY | VIRGINIA

Project Contacts: TCS/RMS
 Project Number: 9048-11
 Scale: 1"=50'
 Date: 4/04/12
 Sheet Number
4 OF 5

S:\Jobs\0404811-Ph1-SingleFamily-HickoryNeck\dwg\Sun\Plate\Section 2 Phase K\04048-11 Plat 2K SH 04.dwg, 7/16/2012 2:29:42 PM, aaron.arnall