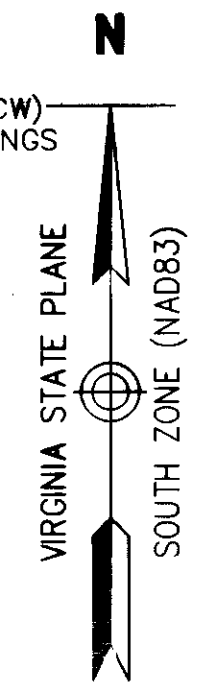


N/F  
XANTERRA KINGSMILL, LLC.  
PARCEL R-2  
PART OF TAX PARCEL  
5030100001 AND  
5040100001  
ZONED R-4  
REF. DOC. NO. 100015441 OF RECORD  
REF. INSTR. NO. 100014944 OF RECORD

00°00'29" (CCW)  
RECORD BEARINGS



CENTERLINE OF  
10' CITY OF NEWPORT NEWS  
WATERLINE EASEMENT

N/F  
CONFERENCE CENTER  
CONDOMINIUMS UNIT  
OWNERS ASSOCIATION  
TAX MAP NO. 5041300001  
ZONED R-4  
REF. P.B. 48 PGS. 17-57 OF RECORD  
PROPERTY IS IMPROVED  
IMPROVEMENTS NOT SHOWN

N/F  
XANTERRA KINGSMILL, LLC.  
PARCEL R-2  
PART OF TAX PARCEL  
5030100001 AND  
5040100001  
ZONED R-4  
REF. DOC. NO. 100015441 OF RECORD  
REF. INSTR. NO. 100014944 OF RECORD

CURVE TABLE						
CURVE	LENGTH	RADIUS	TANGENT	CHORD	CHORD BEARING	DELTA
C1	268.57'	139.00'	201.13'	228.70'	S77°09'59"E	110°42'16"
C2	129.11'	311.00'	65.50'	128.18'	S59°22'27"E	23°47'08"
C3	5.35'	80.30'	2.68'	5.35'	S06°59'31"E	3°48'58"
C4	69.32'	95.45'	36.27'	67.81'	S25°53'13"E	41°36'39"
C5	45.21'	80.30'	23.22'	44.62'	N25°01'47"W	32°15'34"
C6	64.03'	1970.00'	32.02'	64.03'	N47°37'23"W	1°51'44"
C7	25.75'	35.45'	13.47'	25.18'	N25°53'13"W	41°36'39"
C8	88.34'	140.30'	45.69'	86.89'	N23°07'18"W	36°04'32"

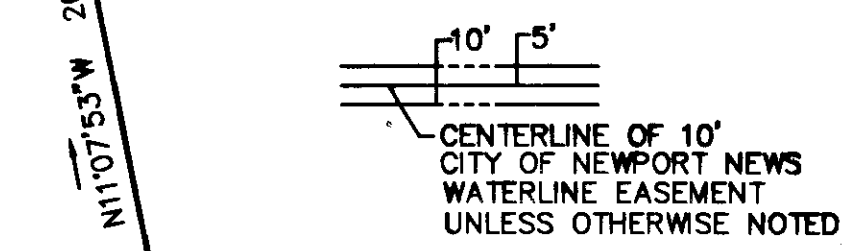
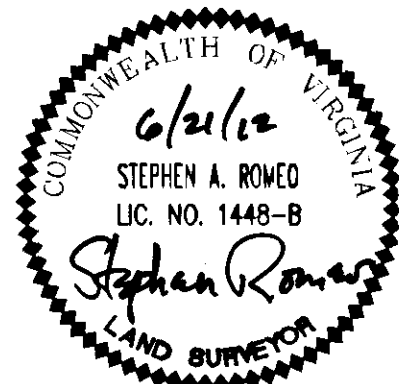
WATER MAIN EASEMENT LINE TABLE		
LINE	LENGTH	BEARING
E1	75.62'	S71°49'42"W
E2	76.05'	S64°53'10"W
E3	18.04'	S60°51'16"W
E4	17.99'	S59°40'03"W
E5	17.94'	S59°02'51"W
E6	17.94'	S63°25'33"W
E7	17.99'	S62°48'21"W
E8	18.03'	S61°11'17"W
E41	16.79'	S33°54'28"E
E42	24.84'	N34°39'15"W

WATER MAIN EASEMENT CURVE TABLE						
CURVE	LENGTH	RADIUS	DELTA	TANGENT	BEARING	CHORD
EC1	40.71'	336.00'	6°56'32"	20.38'	S68°21'26"W	40.69'
EC2	3.52'	640.64'	0°18'53"	1.76'	S56°14'59"W	3.52'
EC3	8.35'	640.64'	0°44'47"	4.17'	S55°43'09"W	8.35'
EC4	237.41'	640.64'	21°13'58"	120.08'	S44°43'46"W	236.05'
EC5	7.02'	640.64'	0°37'39"	3.51'	S33°47'58"W	7.02'

**PLAT OF  
WATER MAIN EASEMENT  
PROJECTING (ON/ACROSS) LAND OF  
XANTERRA KINGSMILL, LLC.  
TO BE CONVEYED TO  
CITY OF NEWPORT NEWS  
BY  
CURRENT OWNER  
SHEET 1 OF 2**

ROBERTS DISTRICT, JAMES CITY COUNTY, VIRGINIA  
DATE: 6/21/12 SCALE: 1"=50'

THIS PLAT IS BASED UPON 2010 FIELD SURVEY BY LANDMARK DESIGN GROUP, NOW VANASSE HANGEN BRUSTLIN, INC. AND TO THE BEST OF MY KNOWLEDGE AND BELIEF COMPLIES WITH THE APPLICABLE REGULATIONS ESTABLISHED BY THE COMMONWEALTH OF VIRGINIA BOARD FOR ARCHITECTS, ENGINEERS, LAND SURVEYORS, CERTIFIED INTERIOR DESIGNERS AND LANDSCAPE ARCHITECTS.



SURVEY TIE LINE / PROPERTY LINE IS MEAN LOW WATER

METES AND BOUNDS PER RECORD AND BASED ON BEST FIT GRID FROM 2010 FIELD SURVEY. BEST FIT GRID DIFFERS FROM NAD 83 VA SOUTH GRID BY 29" COUNTER CLOCK WISE. COORDINATES SHOWN REFERENCED TO NAD 83 SOUTH GRID.

City of Williamsburg & County of James City  
Circuit Court: This PLAT was recorded on  
8 August 2012  
at 9:49 AM/PM, PG \_\_\_\_\_  
Document # 12.0016580  
BETSY B. WOOLRIDGE, CLERK  
\_\_\_\_\_, Dep. Clerk



2 Large/Small Plats Recorded here-with as # 12.0016580



**Vanasse Hangen Brustlin, Inc.**  
Transportation Land Development Environmental Services  
351 McLaws Circle, Suite 3  
Williamsburg, Virginia 23185  
(757) 220-0500 • FAX (757) 220-8544