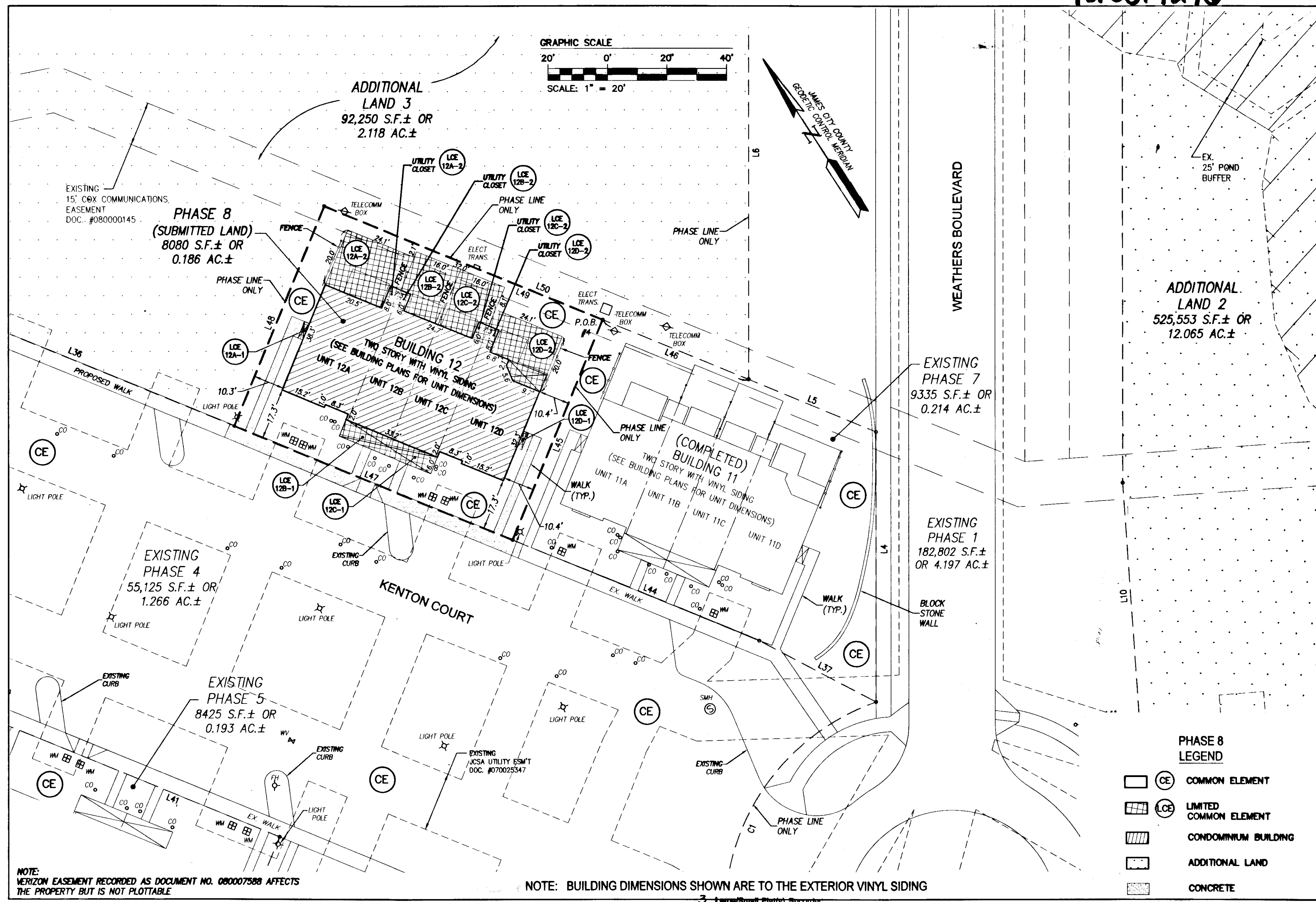


120014276



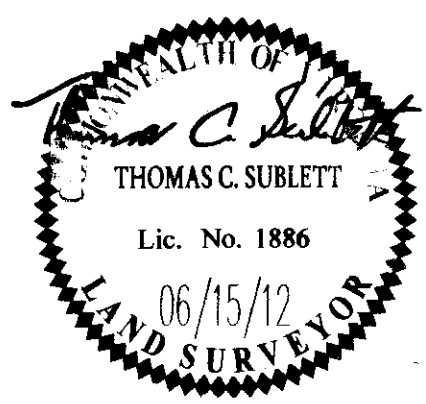
NOTE: VERIZON EASEMENT RECORDED AS DOCUMENT NO. 080007588 AFFECTS THE PROPERTY BUT IS NOT PLOTTABLE

NOTE: BUILDING DIMENSIONS SHOWN ARE TO THE EXTERIOR VINYL SIDING

- PHASE 8 LEGEND**
- COMMON ELEMENT
  - LIMITED COMMON ELEMENT
  - CONDOMINIUM BUILDING
  - ADDITIONAL LAND
  - CONCRETE

Rev.	Date	Description	Revised By

City of Williamsburg & County of James City  
Circuit Court: This PLAT was recorded on  
July 11, 2012  
at 10:44 AM/PM, PB PG  
Document # 120014276  
BETSY B. WOOLRIDGE, CLERK  
Patrick Macaluso, Dep. Clerk



**AES**  
CONSULTING ENGINEERS  
Hampton Roads | Central Virginia | Middle Peninsula

5248 Olde Towne Road, Suite 1  
Williamsburg, Virginia 23188  
Phone: (757) 253-0040  
Fax: (757) 220-8994  
www.aesva.com

**PLAT OF CONDOMINIUM  
WEATHERLY AT WHITEHALL  
PHASE 8**

STONEHOUSE DISTRICT      JAMES CITY COUNTY      VIRGINIA

Project Contacts:	JFS
Project Number:	9048-09
Scale:	1"=20'
Date:	06/15/2012
Sheet Number	<b>3 OF 3</b>