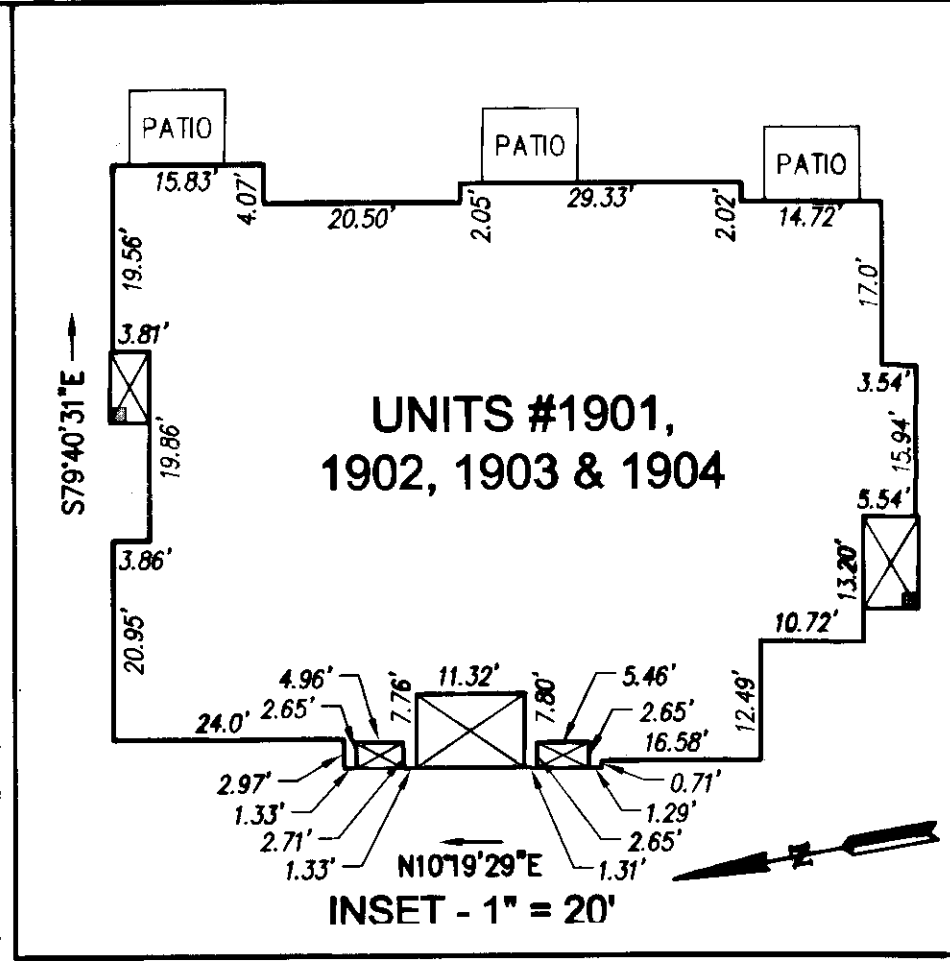
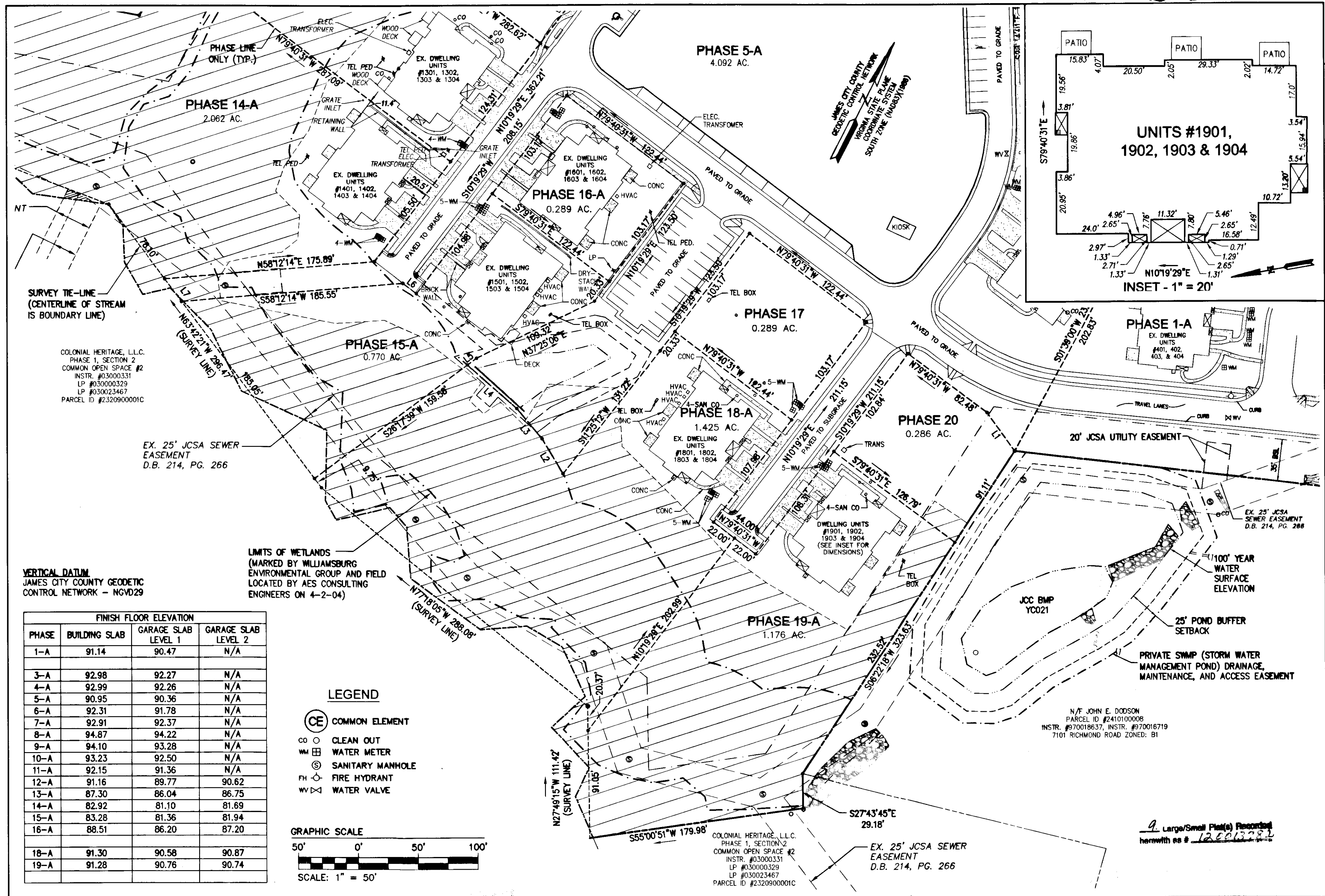


120013782



SURVEY TIE-LINE
(CENTERLINE OF STREAM
IS BOUNDARY LINE)

COLONIAL HERITAGE, L.L.C.
PHASE 1, SECTION 2
COMMON OPEN SPACE #2
INSTR. #03000331
LP #03000329
LP #030023467
PARCEL ID #2320900001C

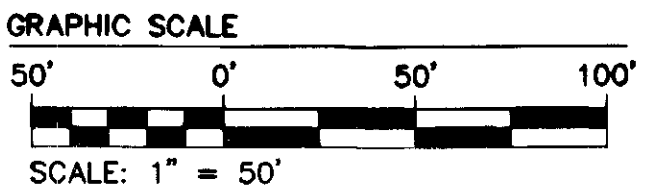
EX. 25' JCSA SEWER
EASEMENT
D.B. 214, PG. 266

VERTICAL DATUM
JAMES CITY COUNTY GEODETIC
CONTROL NETWORK - NGVD29

LIMITS OF WETLANDS
(MARKED BY WILLIAMSBURG
ENVIRONMENTAL GROUP AND FIELD
LOCATED BY AES CONSULTING
ENGINEERS ON 4-2-04)

PHASE	FINISH FLOOR ELEVATION		
	BUILDING SLAB	GARAGE SLAB LEVEL 1	GARAGE SLAB LEVEL 2
1-A	91.14	90.47	N/A
3-A	92.98	92.27	N/A
4-A	92.99	92.26	N/A
5-A	90.95	90.36	N/A
6-A	92.31	91.78	N/A
7-A	92.91	92.37	N/A
8-A	94.87	94.22	N/A
9-A	94.10	93.28	N/A
10-A	93.23	92.50	N/A
11-A	92.15	91.36	N/A
12-A	91.16	89.77	90.62
13-A	87.30	86.04	86.75
14-A	82.92	81.10	81.69
15-A	83.28	81.36	81.94
16-A	88.51	86.20	87.20
18-A	91.30	90.58	90.87
19-A	91.28	90.76	90.74

- LEGEND**
- CE COMMON ELEMENT
 - CO CLEAN OUT
 - WM WATER METER
 - SM SANITARY MANHOLE
 - FH FIRE HYDRANT
 - WV WATER VALVE



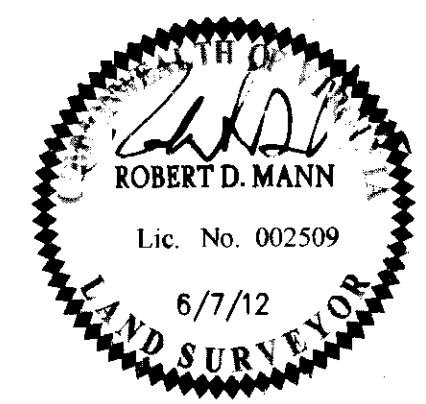
N/F JOHN E. DODSON
PARCEL ID #2410100008
INSTR. #070018637, INSTR. #070016719
7101 RICHMOND ROAD ZONED: B1

9 Large/Small Plat(s) Recorded
herewith as # 120013782

S:\Loba\9286\02-Norge Condo Plans\dwg\Plat\Record\Phase 19\Final Condo Plat PH 19-A\928602Condo Phase 19A_Sh_02.dwg, 6/27/2012 2:19:59 PM, mka.apponen

Rev	Date	Revised

City of Williamsburg & County of James City
Circuit Court: This PLAT was recorded on
2 July 2012
at 3:46 PM, PG.
Document # 120013782
BETSY B. WOOLRIDGE, CLERK
Bryndea Adickel, Dep. Clerk



NES
CONSULTING ENGINEERS

5248 Olde Towne Road, Suite 1
Williamsburg, Virginia 23188
Phone: (757) 253-0040
Fax: (757) 220-8994
www.aesva.com

Hampton Roads | Central Virginia | Middle Peninsula

"EXHIBIT 1"

PLAT OF CONDOMINIUM

WILLIAMSBURG VILLAGE AT NORGE CONDOMINIUM
PHASE 19-A
UNITS #1901, 1902, 1903, AND 1904

STONEHOUSE DISTRICT COUNTY OF JAMES CITY VIRGINIA

Project Contacts:	AES
Project Number:	0286-02-B
Scale:	1"=50'
Date:	06-07-2012
Sheet Number:	2 OF 9