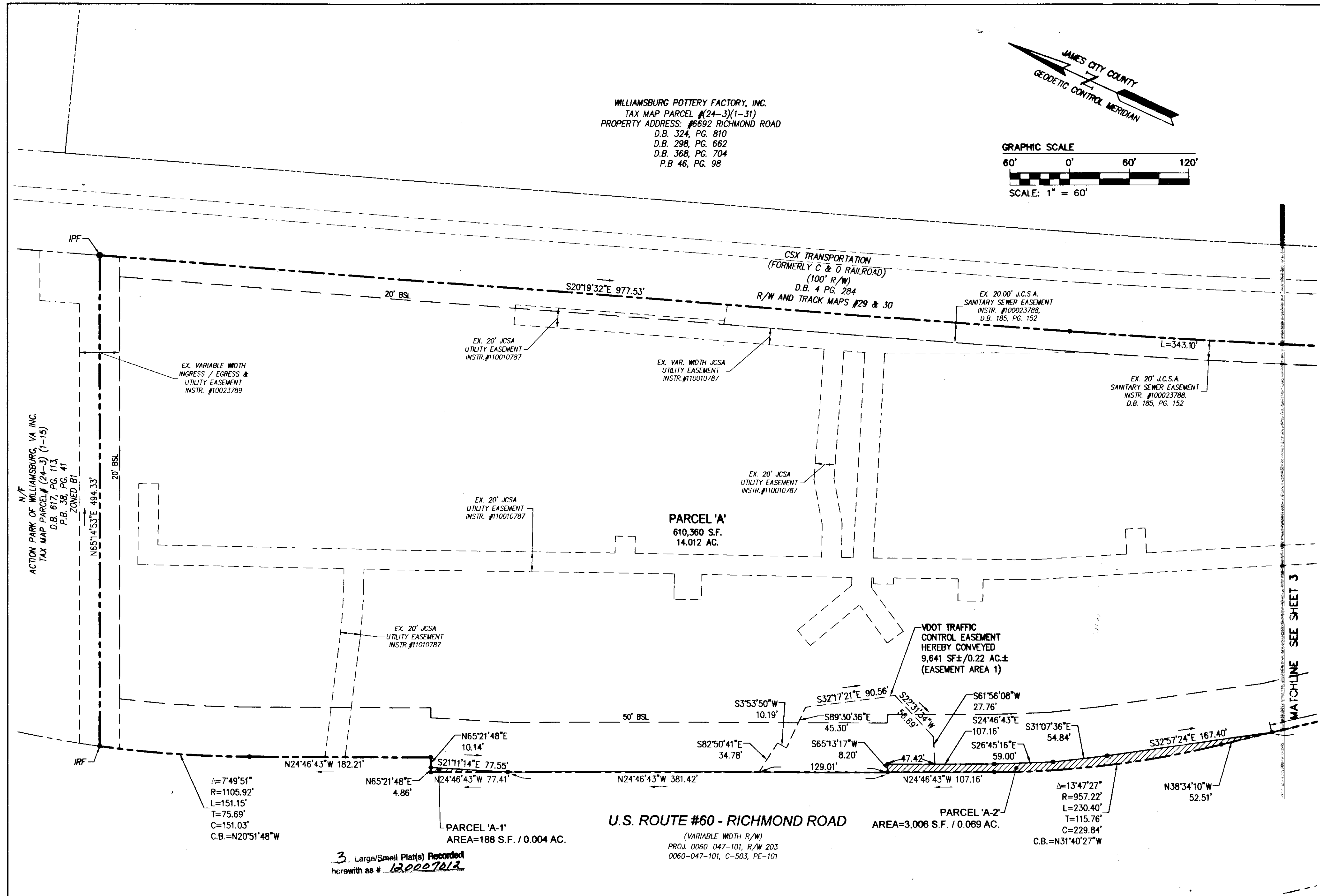
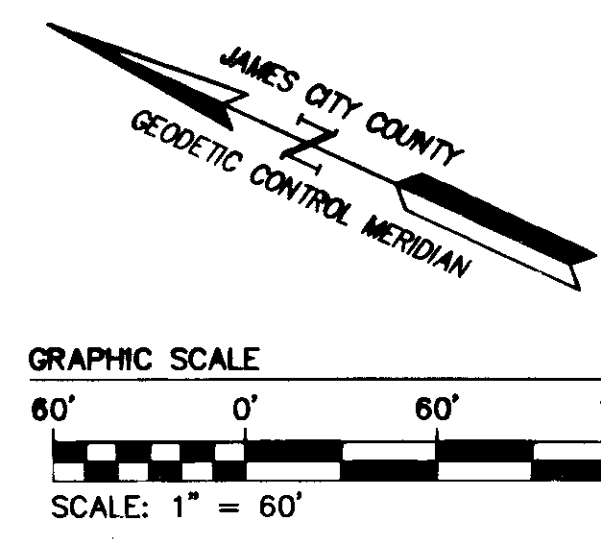


120007012

WILLIAMSBURG POTTERY FACTORY, INC.
 TAX MAP PARCEL #24-3(1-31)
 PROPERTY ADDRESS: #6692 RICHMOND ROAD
 D.B. 324, PG. 810
 D.B. 298, PG. 662
 D.B. 368, PG. 704
 P.B. 46, PG. 98



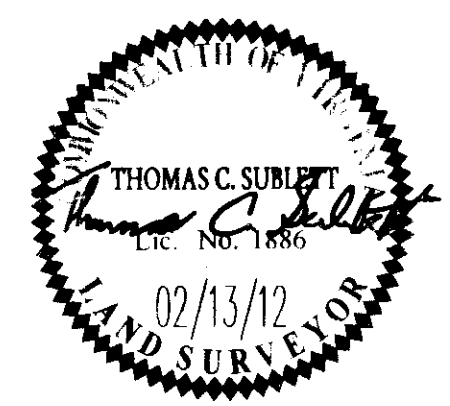
N/F
 ACTION PARK OF WILLIAMSBURG, VA INC.
 TAX MAP PARCEL #24-3(1-15)
 D.B. 617, PG. 113,
 P.B. 38, PG. 41
 ZONED B1

MATCHLINE SEE SHEET 3

Δ=7'49'51"
 R=1105.92'
 L=151.15'
 T=75.69'
 C=151.03'
 C.B.=N20°51'48"W

3. Large/Small Plat(s) Recorded
 herewith as # 120007012

City of Williamsburg & County of James City Circuit Court: This PLAT was recorded on <u>3 April 2012</u> at <u>3:10</u> AM/PM, PG. <u> </u> Document # <u>120007012</u> BESSY B. WOOLRIDGE, CLERK <u>Wanda Alkhalaf</u> , Dep. Clerk	Revised By
Rev.	Date



NIES
 CONSULTING ENGINEERS
 5248 Old Towne Road, Suite 1
 Williamsburg, Virginia 23188
 Phone: (757) 253-0040
 Fax: (757) 220-8994
 www.aesva.com

PLAT OF SUBDIVISION
 AND RIGHT-OF-WAY DEDICATION
 WILLIAMSBURG POTTERY PROPERTIES, LLC.
 TO VIRGINIA DEPARTMENT OF TRANSPORTATION
 STONEHOUSE DISTRICT JAMES CITY COUNTY VIRGINIA

Project Contacts: MJR/TCS
Project Number: 9510-04
Scale: 1"=60'
Date: 02/13/12
Sheet Number
2 OF 3