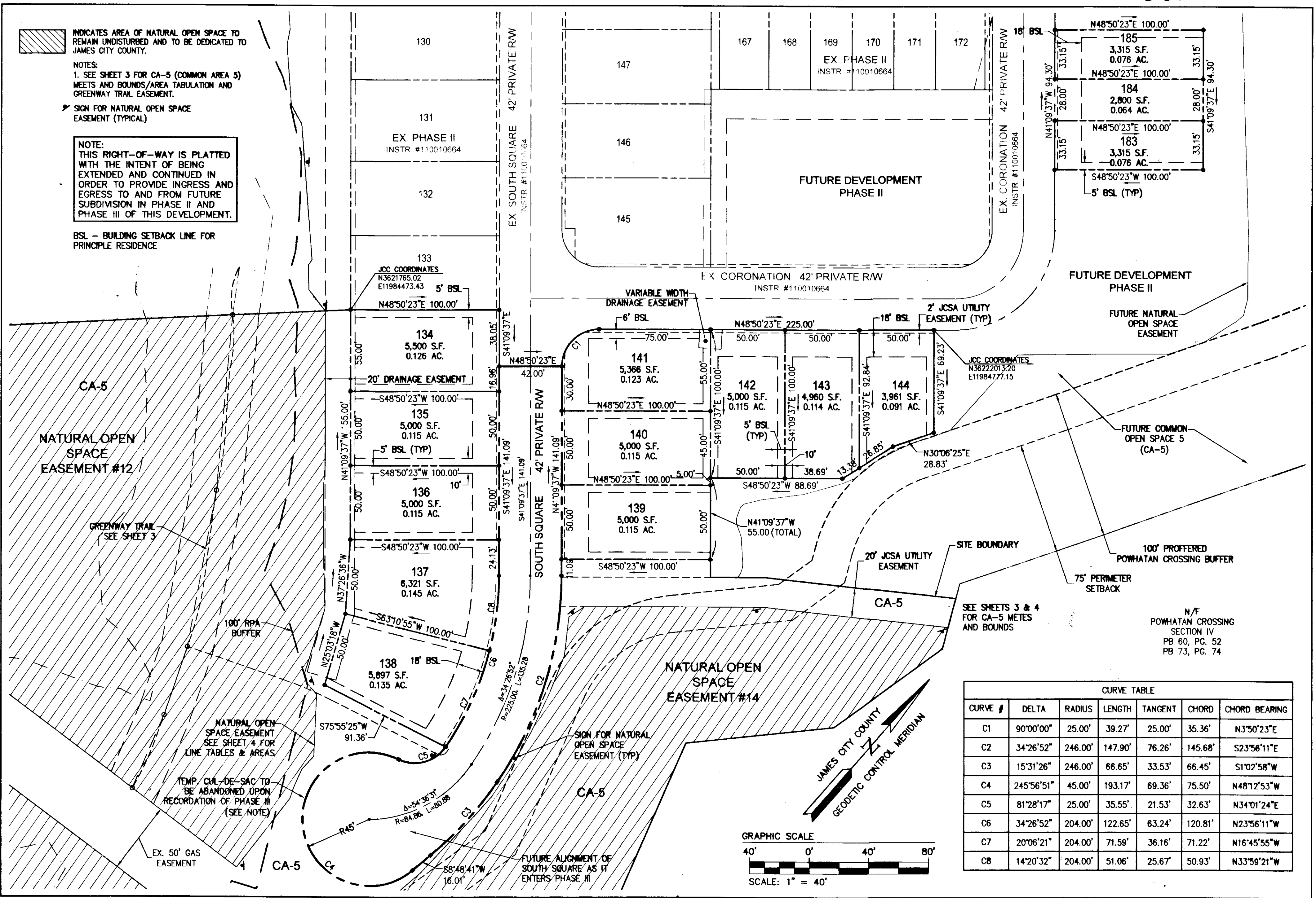
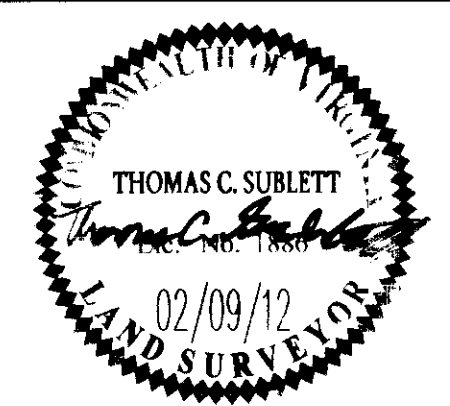


120005813



CURVE TABLE						
CURVE #	DELTA	RADIUS	LENGTH	TANGENT	CHORD	CHORD BEARING
C1	90°00'00"	25.00'	39.27'	25.00'	35.36'	N3°50'23"E
C2	34°26'52"	246.00'	147.90'	76.26'	145.68'	S23°56'11"E
C3	15°31'26"	246.00'	66.65'	33.53'	66.45'	S10°2'58"W
C4	245°56'51"	45.00'	193.17'	69.36'	75.50'	N48°12'53"W
C5	81°28'17"	25.00'	35.55'	21.53'	32.63'	N34°01'24"E
C6	34°26'52"	204.00'	122.65'	63.24'	120.81'	N23°56'11"W
C7	20°06'21"	204.00'	71.59'	36.16'	71.22'	N16°45'55"W
C8	14°20'32"	204.00'	51.06'	25.67'	50.93'	N33°59'21"W

City of Williamsburg & County of James City Circuit Court: This PLAT was recorded on <u>16 March 2012</u> at <u>11:51</u> AM/PM, PB _____ PG _____ Document # <u>120005813</u> BETSY B. WOOLRIDGE, CLERK <u>Brenda A. Baskin</u> , Dep. Clerk		
1	02/09/12	RMS
Rev	Date	Revised By



4 Large/Small Plat(s) Recorded  
 herewith as # 120005813

**INES**  
 CONSULTING ENGINEERS  
 Hampton Roads | Central Virginia | Middle Peninsula

5248 Olde Towne Road, Suite 1  
 Williamsburg, Virginia 23186  
 Phone: (757) 253-0040  
 Fax: (757) 220-8994  
 www.inesva.com

PLAT OF SUBDIVISION  
**THE SETTLEMENT AT POWHATAN CREEK**  
 PHASE II  
 LOTS 134-144, 183-185 AND CA-5

BERKELEY DISTRICT      JAMES CITY COUNTY      VIRGINIA

Project Contacts: TCS  
 Project Number: 9254-08  
 Scale: 1"=40'      Date: 10/28/11  
 Sheet Number  
**2 of 4**