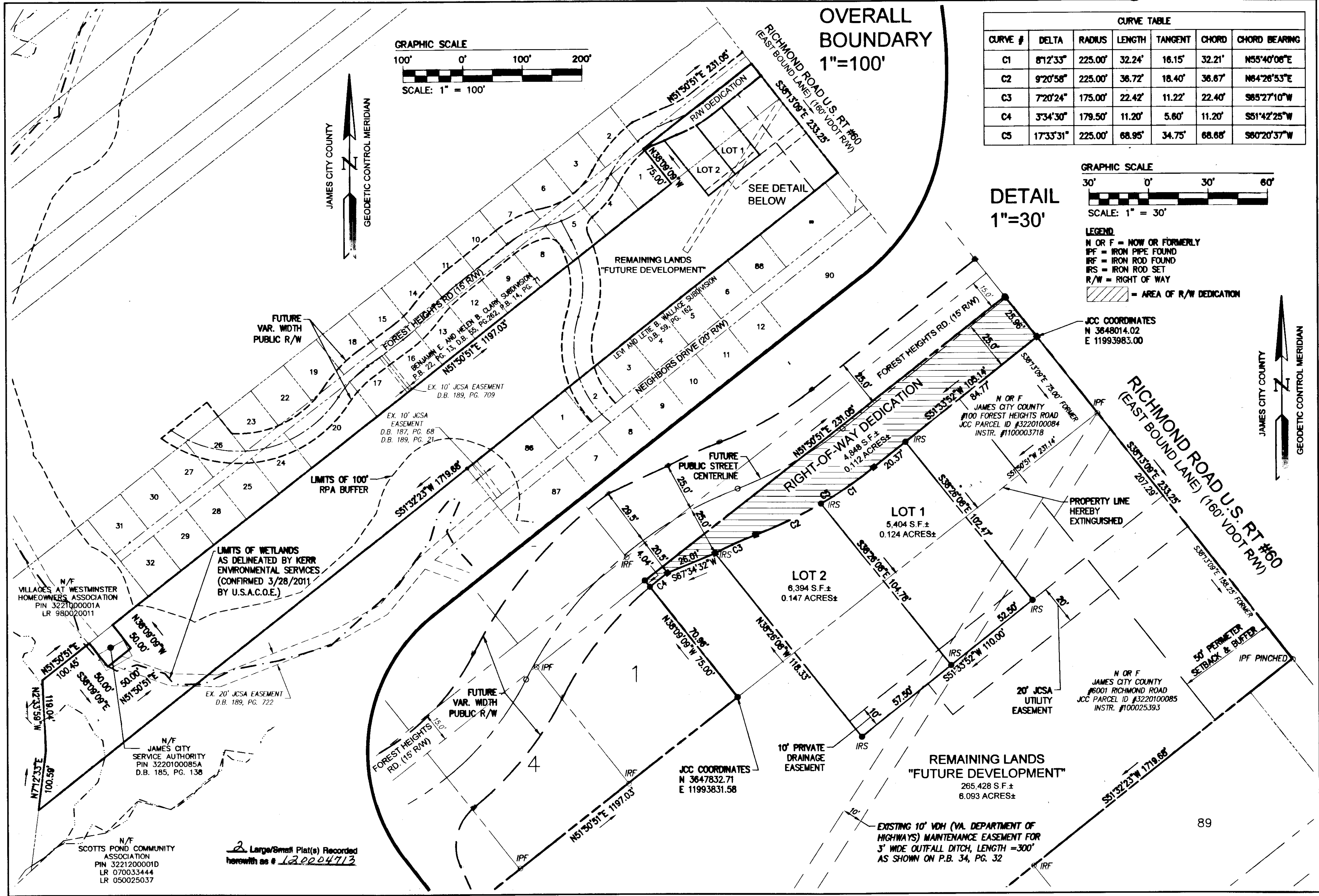
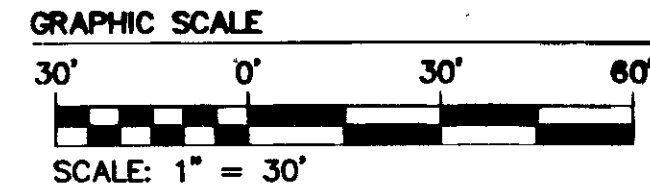
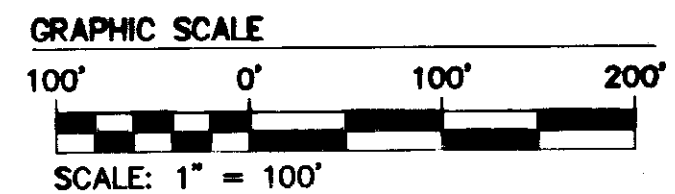


120004713



CURVE TABLE						
CURVE #	DELTA	RADIUS	LENGTH	TANGENT	CHORD	CHORD BEARING
C1	81°2'33"	225.00'	32.24'	16.15'	32.21'	N55°40'06"E
C2	9°20'58"	225.00'	36.72'	18.40'	36.67'	N64°26'53"E
C3	7°20'24"	175.00'	22.42'	11.22'	22.40'	S85°27'10"W
C4	3°34'30"	179.50'	11.20'	5.60'	11.20'	S81°42'25"W
C5	17°33'31"	225.00'	68.95'	34.75'	68.68'	S60°20'37"W



LEGEND
 N OR F = NOW OR FORMERLY
 IPF = IRON PIPE FOUND
 IRF = IRON ROD FOUND
 IRS = IRON ROD SET
 R/W = RIGHT OF WAY
 [Hatched Area] = AREA OF R/W DEDICATION

DETAIL
 1"=30'

N/F VILLAGES AT WESTMINSTER HOMEOWNERS ASSOCIATION
 PIN 322100001A
 LR 980020011

LIMITS OF WETLANDS AS DELINEATED BY KERR ENVIRONMENTAL SERVICES (CONFIRMED 3/28/2011 BY U.S.A.C.O.E.)

N/F JAMES CITY SERVICE AUTHORITY
 PIN 3220100085A
 D.B. 185, PG. 138

N/F SCOTTS POND COMMUNITY ASSOCIATION
 PIN 3221200001D
 LR 070033444
 LR 050025037

2 Large/Small Plat(s) Recorded herewith as # 120004713

JCC COORDINATES
 N 3647832.71
 E 11993831.58

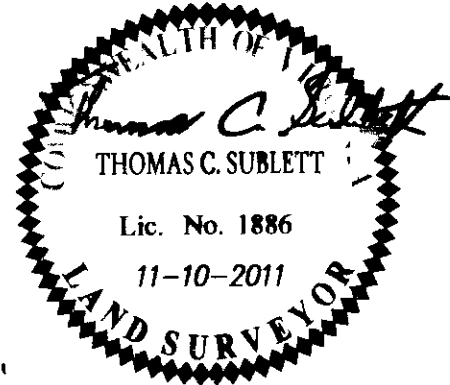
N OR F JAMES CITY COUNTY #6001 RICHMOND ROAD
 JCC PARCEL ID #3220100085
 INSTR. #100025393

REMAINING LANDS "FUTURE DEVELOPMENT"
 265,428 S.F. ±
 6.093 ACRES ±

EXISTING 10' VDH (VA. DEPARTMENT OF HIGHWAYS) MAINTENANCE EASEMENT FOR 3' WIDE OUTFALL DITCH, LENGTH = 300' AS SHOWN ON P.B. 34, PG. 32

Rev	Date	Description	Revised By
1	1/13/12		

City of Williamsburg & County of James City
 Circuit Court: This PLAT was recorded on 23 February 2012
 at 3:25 AM/PM, PG. 1
 Document # 120004713
 BETSY B. WOOLRIDGE, CLERK
 Dep. Clerk



AES
 CONSULTING ENGINEERS
 5248 Old Towne Road, Suite 1
 Williamsburg, Virginia 23188
 Phone: (757) 253-0040
 Fax: (757) 220-8994
 www.aesva.com

PLAT OF BOUNDARY LINE EXTINGUISHMENT AND SUBDIVISION OF LOTS 1 & 2 AND RIGHT-OF-WAY DEDICATION
FOREST HEIGHTS NEIGHBORHOOD
 PREPARED FOR:
 JAMES CITY COUNTY HOUSING & COMMUNITY DEVELOPMENT
 POWHATAN DISTRICT JAMES CITY COUNTY VIRGINIA

Project Contacts:	ABS / TCS
Project Number:	WH0119-E-03
Scale:	NOTED
Date:	11-10-2011
Sheet Number:	2 OF 2